

Anti-RBX1 Antibody

Catalog Number: M00524-1

About RBX1

E3 ubiquitin ligase component of multiple cullin-RING- based E3 ubiquitin-protein ligase complexes which mediate the ubiquitination and subsequent proteasomal degradation of target proteins, including proteins involved in cell cycle progression, signal transduction, transcription and transcription-coupled nucleotide excision repair. The functional specificity of the E3 ubiquitin-protein ligase complexes depends on the variable substrate recognition components. As a component of the CSA complex promotes the ubiquitination of ERCC6 resulting in proteasomal degradation. Through the RING-type zinc finger, seems to recruit the E2 ubiquitination enzyme, like CDC34, to the complex and brings it into close proximity to the substrate. Probably also stimulates CDC34 autoubiquitination. May be required for histone H3 and histone H4 ubiquitination in response to ultraviolet and for subsequent DNA repair. Promotes the neddylation of CUL1, CUL2, CUL4 and CUL4 via its interaction with UBE2M. Involved in the ubiquitination of KEAP1, ENC1 and KLHL41. In concert with ATF2 and CUL3, promotes degradation of KAT5 thereby attenuating its ability to acetylate and activate ATM.

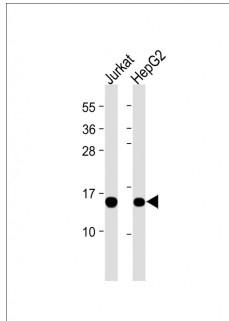
Overview

Product Name	Anti-RBX1 Antibody
Reactive Species	Human, Mouse
Description	Boster Bio Anti-RBX1 Antibody (Catalog # M00524-1). Tested in WB application(s). This antibody reacts with Human, Mouse.
Application	WB
Clonality	Monoclonal 1859CT866.7.47
Formulation	Purified monoclonal antibody supplied in PBS with 0.09% (W/V) sodium azide.
Storage Instructions	Maintain refrigerated at 2-8°C for up to 2 weeks. For long-term storage, store at -20°C in small aliquots to prevent freeze-thaw cycles.
Host	Mouse
Uniprot ID	P62877

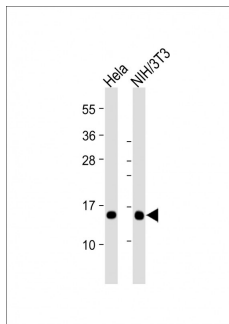
Technical Details

Immunogen	This antibody is generated from a mouse immunized with a recombinant protein between 1-108 amino acids from human.
Predicted Reactive Species	Mouse
Isotype	IgG1,kappa
Purification	This antibody is purified through a protein G column, followed by dialysis against PBS.
Suggested Dilutions	WB: 1:2000

Anti-RBX1 Antibody (M00524-1) Images



All lanes : Anti-RBX1 at dilution
Lane 1: Jurkat whole cell lysate
Lane 2: HepG2 whole cell lysate
Lysates/proteins at 20 μ g per lane. Secondary Goat Anti-mouse IgG, (H+L), Peroxidase conjugated at 1/10000 dilution. Predicted band size : 12kDa
Blocking/Dilution buffer: 5% NFDN/TBST.



All lanes : Anti-RBX1 at 1:2000 dilution
Lane 1: HeLa whole cell lysate
Lane 2: NIH/3T3 whole cell lysate
Lysates/proteins at 20 μ g per lane. Secondary Goat Anti-mouse IgG, (H+L), Peroxidase conjugated at 1/10000 dilution. Predicted band size : 12 kDa
Blocking/Dilution buffer: 5% NFDN/TBST.

Submit a product review to [Biocompare.com](https://www.biocompare.com)

Submit a review of this product to [Biocompare.com](https://www.biocompare.com) to receive a \$20 Amazon.com giftcard! Your reviews help your fellow scientists make the right decisions. Thank you for your contribution.



Anti-RBX1 Antibody

For Research Use Only. Not for use in diagnostic procedures.