

Anti-ErbB 3 (ERBB3) Mouse Monoclonal Antibody [Clone ID: OTI3E10]

Catalog Number: M00539-2

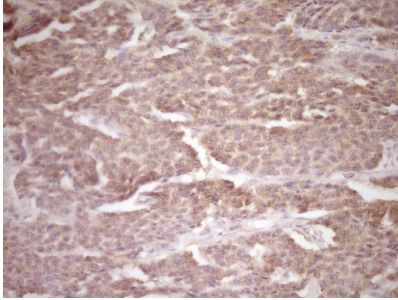
Overview

Product Name	Anti-ErbB 3 (ERBB3) Mouse Monoclonal Antibody [Clone ID: OTI3E10]
Reactive Species	Human, Mouse, Rat
Description	Boster Bio ERBB3 mouse monoclonal antibody, clone OTI3E10 (formerly 3E10). Catalog# M00539-2. Tested in FC. This antibody reacts with Human, Mouse, Rat.
Application	Flow Cytometry
Clonality	Monoclonal OTI3E10
Formulation	PBS (pH 7.3) containing 1% stabilizing protein, 50% glycerol and 0.02% sodium azide. This antibody is supplied in a stabilized formulation. Compatibility with conjugation reactions depends on the chemistry of the conjugation method used. For conjugation methods that are not compatible with the stabilizing components present in this formulation, a carrier-free antibody format is required.
Storage Instructions	Store at -20°C as received.
Host	Mouse
Uniprot ID	P21860

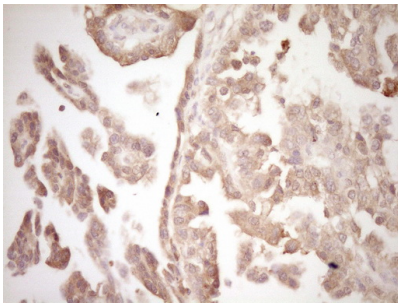
Technical Details

Immunogen	Full length human recombinant protein of human ERBB3 (NP_001973) produced in SF9 cell.
Isotype	IgG2b
Concentration	1 mg/ml
Purification	Purified from mouse ascites fluids or tissue culture supernatant by affinity chromatography (protein A/G)
Suggested Dilutions	IHC 1:150

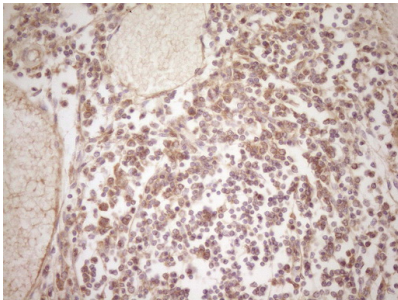
Anti-ErbB 3 (ERBB3) Mouse Monoclonal Antibody [Clone ID: OTI3E10] (M00539-2) Images



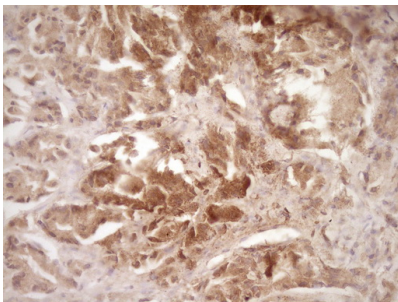
Immunohistochemical staining of paraffin-embedded Carcinoma of Human lung tissue using anti-ERBB3 mouse monoclonal antibody. (Heat-induced epitope retrieval by 1 mM EDTA in 10mM Tris)



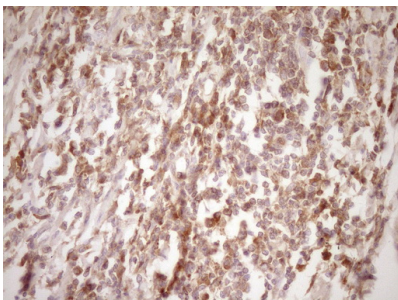
Immunohistochemical staining of paraffin-embedded Adenocarcinoma of Human ovary tissue using anti-ERBB3 mouse monoclonal antibody. (Heat-induced epitope retrieval by 1 mM EDTA in 10mM Tris)



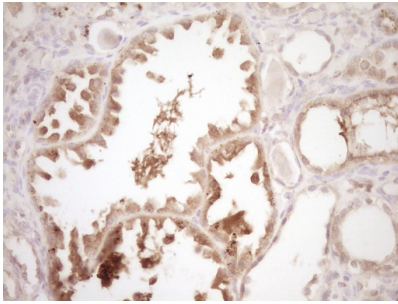
Immunohistochemical staining of paraffin-embedded Human thyroid tissue within the normal limits using anti-ERBB3 mouse monoclonal antibody. (Heat-induced epitope retrieval by 1 mM EDTA in 10mM Tris)



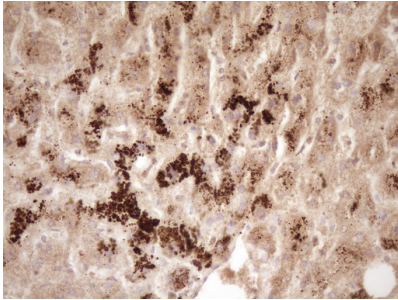
Immunohistochemical staining of paraffin-embedded Carcinoma of Human prostate tissue using anti-ERBB3 mouse monoclonal antibody. (Heat-induced epitope retrieval by 1 mM EDTA in 10mM Tris)



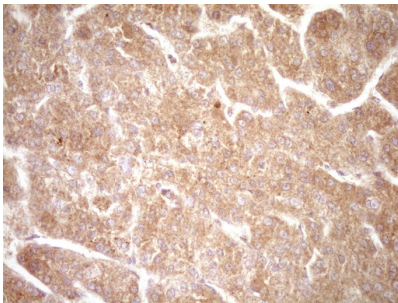
Immunohistochemical staining of paraffin-embedded Human colon tissue within the normal limits using anti-ERBB3 mouse monoclonal antibody. (Heat-induced epitope retrieval by 1 mM EDTA in 10mM Tris)



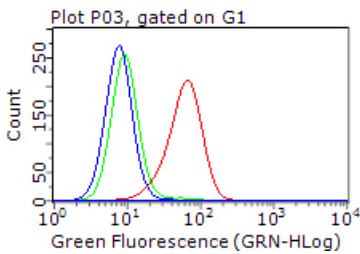
Immunohistochemical staining of paraffin-embedded Human Kidney tissue within the normal limits using anti-ERBB3 mouse monoclonal antibody. (Heat-induced epitope retrieval by 1 mM EDTA in 10mM Tris)



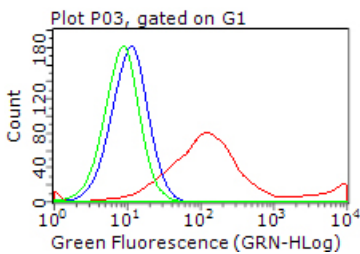
Immunohistochemical staining of paraffin-embedded Human liver tissue within the normal limits using anti-ERBB3 mouse monoclonal antibody. (Heat-induced epitope retrieval by 1 mM EDTA in 10mM Tris)



Immunohistochemical staining of paraffin-embedded Carcinoma of Human liver tissue using anti-ERBB3 mouse monoclonal antibody. (Heat-induced epitope retrieval by 1 mM EDTA in 10mM Tris)



Flow cytometric Analysis of living MDA-MB-435 cells



HEK293T cells transfected with either ERBB3 (Myc-DDK-tagged) overexpress plasmid (Red)

Submit a product review to Biocompare.com

Submit a review of this product to Biocompare.com to receive a \$20 Amazon.com giftcard! Your reviews help your fellow scientists make the right decisions. Thank you for your contribution.



Anti-ErbB 3 (ERBB3) Mouse Monoclonal Antibody [Clone ID: OTI3E10]

For Research Use Only. Not for use in diagnostic procedures.