

## Anti-PR (Progesterone Receptor) PGR Rabbit Monoclonal Antibody, Clone#RM357

Catalog Number: M00541-3

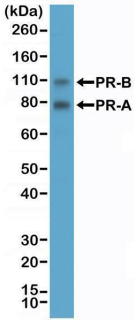
### Overview

Product Name	Anti-PR (Progesterone Receptor) PGR Rabbit Monoclonal Antibody, Clone#RM357
Reactive Species	Human
Description	Boster Bio Anti-PR (Progesterone Receptor) PGR Rabbit Monoclonal Antibody, Clone#RM357 (Catalog # M00541-3). Tested in IHC, WB applications. This antibody reacts with Human.
Application	IHC, WB
Clonality	Monoclonal RM357
Formulation	50% Glycerol/PBS with 1% stabilizing protein and 0.09% sodium azide This antibody is supplied in a stabilized formulation. Compatibility with conjugation reactions depends on the chemistry of the conjugation method used. For conjugation methods that are not compatible with the stabilizing components present in this formulation, a carrier-free antibody format is required.
Storage Instructions	Store at -20°C for one year. Avoid repeated freeze-thaw cycles.
Host	Rabbit
Uniprot ID	P06401

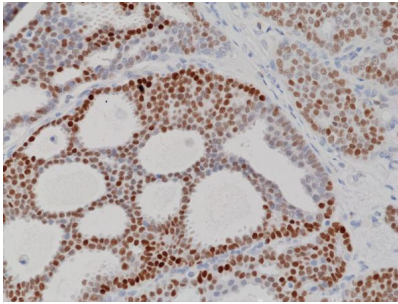
### Technical Details

Immunogen	A peptide corresponding to C-terminus of human Progesterone Receptor.
Cross Reactivity	This antibody reacts to human Progesterone Receptor (PR). It may also react to mouse and rat PR, as predicted by immunogen homology
Isotype	Rabbit IgG
Form	Liquid
Concentration	0.5-1mg/ml, actual concentration vary by lot. Use suggested dilution ratio to decide dilution procedure.
Purification	Protein A affinity purified from an animal origin-free culture supernatant
Suggested Dilutions	Immunohistochemistry (IHC): 1:100-1:200 dilution WB: 1:1000-1:2000 dilution.

## Anti-PR (Progesterone Receptor) PGR Rabbit Monoclonal Antibody, Clone#RM357 (M00541-3) Images



Western Blotting result Western Blot of T47D cell lysate using anti-Progesterone Receptor (PR) rabbit monoclonal antibody (clone RM357) at a 1:2000 dilution.



IHC result Immunohistochemical staining of formalin fixed and paraffin embedded human breast cancer tissue section using anti-Progesterone Receptor (PR) rabbit monoclonal antibody (clone RM357) at a 1:100 dilution.

### Submit a product review to Biocompare.com

Submit a review of this product to Biocompare.com to receive a \$20 Amazon.com giftcard! Your reviews help your fellow scientists make the right decisions. Thank you for your contribution.



Anti-PR (Progesterone Receptor) PGR Rabbit Monoclonal Antibody, Clone#RM357

For Research Use Only. Not for use in diagnostic procedures.