

Anti-Progesterone Receptor (PGR) Mouse Monoclonal Antibody [Clone ID: OTI4B3]

Catalog Number: M00541-4

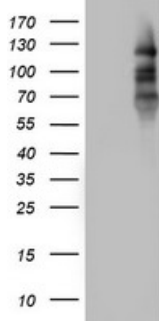
Overview

Product Name	Anti-Progesterone Receptor (PGR) Mouse Monoclonal Antibody [Clone ID: OTI4B3]
Reactive Species	Human
Description	Boster Bio PGR mouse monoclonal antibody, clone OTI4B3 (formerly 4B3). Catalog# M00541-4. Tested in FC, IHC, WB. This antibody reacts with Human.
Application	Flow Cytometry, IHC, WB
Clonality	Monoclonal OTI4B3
Formulation	PBS (pH 7.3) containing 1% stabilizing protein, 50% glycerol and 0.02% sodium azide. This antibody is supplied in a stabilized formulation. Compatibility with conjugation reactions depends on the chemistry of the conjugation method used. For conjugation methods that are not compatible with the stabilizing components present in this formulation, a carrier-free antibody format is required.
Storage Instructions	Store at -20°C as received.
Host	Mouse
Uniprot ID	P06401

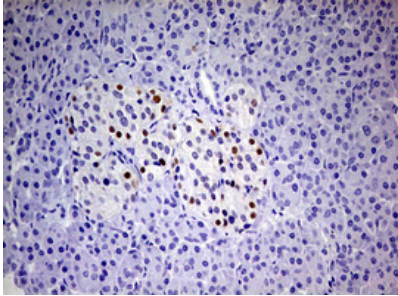
Technical Details

Immunogen	Human recombinant protein fragment corresponding to amino acids 1-298 of human PGR (NP_000917) produced in E.coli.
Isotype	IgG2a
Concentration	1 mg/ml
Purification	Purified from mouse ascites fluids or tissue culture supernatant by affinity chromatography (protein A/G)
Suggested Dilutions	WB 1:2000 IHC 1:150 Flow Cytometry 1:200

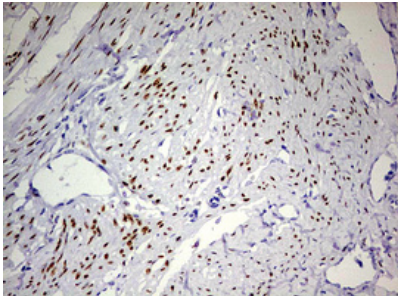
Anti-Progesterone Receptor (PGR) Mouse Monoclonal Antibody [Clone ID: OTI4B3] (M00541-4) Images



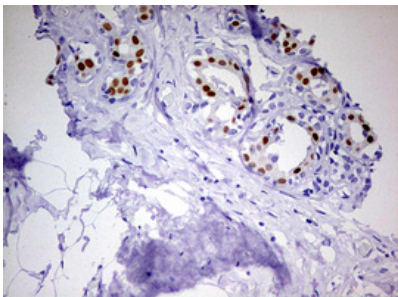
HEK293T cells were transfected with the pCMV6-ENTRY control (Left lane) or pCMV6-ENTRY PGR (Right lane) cDNA for 48 hrs and lysed. Equivalent amounts of cell lysates (5 ug per lane) were separated by SDS-PAGE and immunoblotted with anti-PGR.



Immunohistochemical staining of paraffin-embedded Human pancreas tissue within the normal limits using anti-PGR mouse monoclonal antibody. (M00541-4; heat-induced epitope retrieval by 1 mM EDTA in 10mM Tris

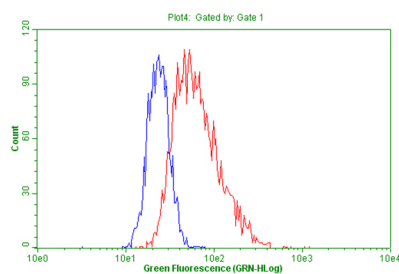


Immunohistochemical staining of paraffin-embedded Human endometrium tissue within the normal limits using anti-PGR mouse monoclonal antibody. (M00541-4; heat-induced epitope retrieval by 1 mM EDTA in 10mM Tris



Immunohistochemical staining of paraffin-embedded Human breast tissue within the normal limits using anti-PGR mouse monoclonal antibody. (M00541-4; heat-induced epitope retrieval by 1 mM EDTA in 10mM Tris

Flow cytometric Analysis of MCF-7 cells_penetrated



Submit a product review to Biocompare.com

Submit a review of this product to Biocompare.com to receive a \$20 Amazon.com giftcard! Your reviews help your fellow scientists make the right decisions. Thank you for your contribution.



Anti-Progesterone Receptor (PGR) Mouse Monoclonal Antibody [Clone ID: OTI4B3]

For Research Use Only. Not for use in diagnostic procedures.