

Anti-Cyclin E1 CCNE1 Rabbit Monoclonal Antibody

Catalog Number: M00543

About CCNE1

Dynamin-related GTPase required for mitochondrial fusion and regulation of apoptosis. May form a diffusion barrier for proteins stored in mitochondrial cristae. Proteolytic processing in response to intrinsic apoptotic signals may lead to disassembly of OPA1 oligomers and release of the caspase activator cytochrome C (CYCS) into the mitochondrial intermembrane space.

Overview

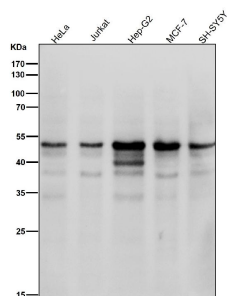
Product Name	Anti-Cyclin E1 CCNE1 Rabbit Monoclonal Antibody
Reactive Species	Human
Description	Boster Bio Anti-Cyclin E1 CCNE1 Rabbit Monoclonal Antibody catalog # M00543. Tested in WB, ICC/IF applications. This antibody reacts with Human.
Application	IF, ICC, WB
Clonality	Monoclonal GHB-3
Formulation	Rabbit IgG in phosphate buffered saline, pH 7.4, 150mM NaCl, 0.02% sodium azide and 50% glycerol, 0.4-0.5mg/ml BSA.
Storage Instructions	Store at -20°C for one year. For short term storage and frequent use, store at 4°C for up to one month. Avoid repeated freeze-thaw cycles.
Host	Rabbit
Uniprot ID	P24864

Technical Details

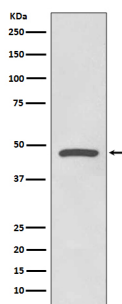
Immunogen	A synthesized peptide derived from human Cyclin E1
Isotype	Rabbit IgG
Form	Liquid
Concentration	Actual concentration vary by lot. Use suggested dilution ratio to decide dilution procedure.
Purification	Affinity-chromatography
Suggested Dilutions	Dilute the sample so that the expected range of concentrations fall within the detection range of this kit. If the expected range of concentration is unknown, a pilot test should be conducted to decide the optimal dilution ratio for your samples. Some PubMed article(s) citing the expression level of this target are as follows: Boster Bio's internal QC testing used:

	WB 1:1000-1:2000 ICC/IF 1:50-1:200
--	---------------------------------------

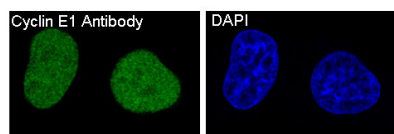
Anti-Cyclin E1 CCNE1 Rabbit Monoclonal Antibody (M00543) Images



All lanes use the Antibody at 1:2K dilution for 1 hour at room temperature.



Western blot analysis of Cyclin E1 expression in HeLa cell lysate.



Immunofluorescent analysis of HeLa cells, using Cyclin E1 Antibody.

1 Publications Citing This Product

1. PubMed ID: 23145020, Wu Y, Tao Y, Chen Y, Xu W. Plos One. 2012;7(11):E48917. Doi: 10.1371/Journal.Pone.0048917. Epub 2012 Nov 7. Rhoc Regulates The Proliferation Of Gastric Cancer Cells Through Interaction With Iqgap1.

Visit bosterbio.com/anti-cyclin-e1-rabbit-monoclonal-antibody-m00543-boster.html to see all 1 publications.

Submit a product review to Biocompare.com

Submit a review of this product to Biocompare.com to receive a \$20 Amazon.com giftcard! Your reviews help your fellow scientists make the right decisions. Thank you for your contribution.



Anti-Cyclin E1 CCNE1 Rabbit Monoclonal Antibody