

## Anti-ALDH2 Monoclonal Antibody

Catalog Number: M00546

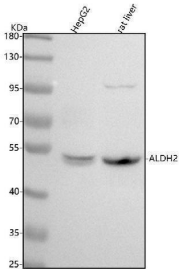
### Overview

Product Name	Anti-ALDH2 Monoclonal Antibody
Reactive Species	Human, Mouse, Rat
Description	Boster Bio Anti-ALDH2 Monoclonal Antibody catalog # M00546. Tested in WB, IHC, ICC/IF, IP applications. This antibody reacts with Human, Mouse, Rat.
Application	IP, IF, IHC, ICC, WB
Clonality	Monoclonal AFOI-1
Formulation	Rabbit IgG in stabilizing components, phosphate buffered saline, pH 7.4, 150mM NaCl, 0.02% sodium azide and 50% glycerol. *This antibody is supplied in a stabilized formulation. Compatibility with conjugation reactions depends on the chemistry of the conjugation method used. For conjugation methods that are not compatible with the stabilizing components present in this formulation, a carrier-free antibody format is required.
Storage Instructions	Store at -20°C for one year. For short term storage and frequent use, store at 4°C for up to one month. Avoid repeated freeze-thaw cycles.
Host	Rabbit
Uniprot ID	P05091

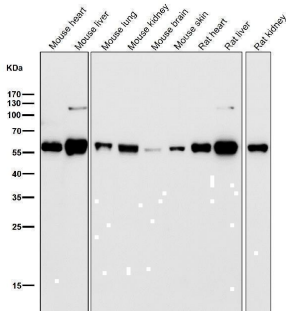
### Technical Details

Immunogen	A synthesized peptide derived from human ALDH2 Alcohol metabolism; ethanol degradation; acetate from ethanol: step 2/2.
Isotype	Rabbit IgG
Form	Liquid
Concentration	0.5mg/ml
Purification	Affinity-chromatography
Suggested Dilutions	WB 1:500-2000 IHC 1:50-200 ICC/IF 1:50-200 IP 1:50

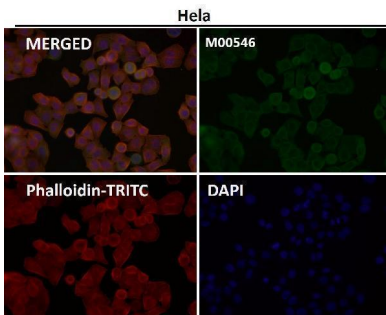
## Anti-ALDH2 Monoclonal Antibody (M00546) Images



Western blot analysis of CDH2 using anti-CDH2 antibody (M01577-1). Electrophoresis was performed on a 5-20% SDS-PAGE gel at 70V (Stacking gel) / 90V (Resolving gel) for 2-3 hours. The sample well of each lane was loaded with 30 ug of sample under reducing conditions. Lane 1: human 293T whole cell lysates, Lane 2: human Hela whole cell lysates, Lane 3: human A549 whole cell lysates, Lane 4: rat heart tissue lysates, Lane 5: rat brain tissue lysates, Lane 6: mouse heart tissue lysates, Lane 7: mouse brain tissue lysates. After electrophoresis, proteins were transferred to a nitrocellulose membrane at 150 mA for 50-90 minutes. Blocked the membrane with 5% non-fat milk/TBS for 1.5 hour at RT. The membrane was incubated with rabbit anti-CDH2 antigen affinity purified monoclonal antibody (Catalog # M01577-1) at 1:500 overnight at 4°C, then washed with TBS-0.1%Tween 3 times with 5 minutes each and probed with a goat anti-rabbit IgG-HRP secondary antibody at a dilution of 1:5000 for 1.5 hour at RT. The signal is developed using an Enhanced Chemiluminescent detection (ECL) kit (Catalog # EK1002) with Tanon 5200 system. A specific band was detected for CDH2 at approximately 140 kDa. The expected band size for CDH2 is at 100 kDa.

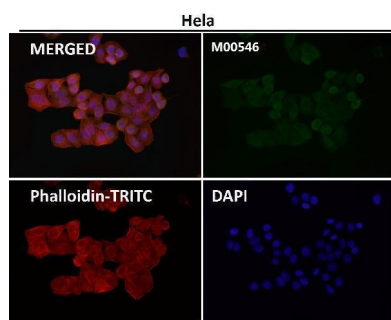


All lanes use the Antibody at 1:1K dilution for 1 hour at room temperature.



Immunofluorescent analysis using the Antibody at 1:50 dilution.

Immunofluorescent analysis using the Antibody at 1:150 dilution.



## 1 Publications Citing This Product

1. PubMed ID: 31935835, Li Y,Chen F,Chen J,Chan S,He Y,Liu W,Zhang G.Disulfiram/Copper Induces Antitumor Activity against Both Nasopharyngeal Cancer Cells and Cancer-Associated Fibroblasts through ROS/MAPK and Ferroptosis Pathways.Cancers (Basel).2020 Jan 6;12(1):138.doi:10.3390

Visit [bosterbio.com/anti-aldh2-antibody-m00546-boster.html](https://bosterbio.com/anti-aldh2-antibody-m00546-boster.html) to see all 1 publications.

## Submit a product review to Biocompare.com

Submit a review of this product to Biocompare.com to receive a \$20 Amazon.com giftcard! Your reviews help your fellow scientists make the right decisions. Thank you for your contribution.



Anti-ALDH2 Monoclonal Antibody

For Research Use Only. Not for use in diagnostic procedures.