

Anti-ALDH2 Antibody

Catalog Number: M00546-4

About ALDH2

This protein belongs to the aldehyde dehydrogenase family of proteins. Aldehyde dehydrogenase is the second enzyme of the major oxidative pathway of alcohol metabolism. Two major liver isoforms of this enzyme, cytosolic and mitochondrial, can be distinguished by their electrophoretic mobilities, kinetic properties, and subcellular localizations. Most Caucasians have two major isozymes, while approximately 50% of Orientals have only the cytosolic isozyme, missing the mitochondrial isozyme. A remarkably higher frequency of acute alcohol intoxication among Orientals than among Caucasians could be related to the absence of the mitochondrial isozyme. This gene encodes a mitochondrial isoform, which has a low Km for acetaldehydes, and is localized in mitochondrial matrix.

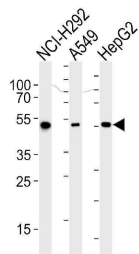
Overview

Product Name	Anti-ALDH2 Antibody
Reactive Species	Human
Description	Boster Bio Anti-ALDH2 Antibody (Catalog # M00546-4). Tested in WB, IF, Flow Cytometry, IHC-P application(s). This antibody reacts with Human.
Application	Flow Cytometry, IF, IHC-P, WB
Clonality	Monoclonal 138CT22.3.8
Formulation	Purified monoclonal antibody supplied in PBS with 0.09% (W/V) sodium azide.
Storage Instructions	Maintain refrigerated at 2-8°C for up to 2 weeks. For long-term storage, store at -20°C in small aliquots to prevent freeze-thaw cycles.
Host	Mouse
Uniprot ID	P05091

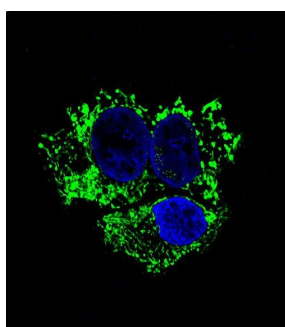
Technical Details

Immunogen	This ALDH2 Monoclonal antibody is generated from mouse immunized with ALDH2 recombinant protein.
Predicted Reactive Species	Bovine, Mouse
Isotype	IgG1,Igkappa
Purification	This antibody is purified through a protein G column, followed by dialysis against PBS.
Suggested Dilutions	IF: 1:10-1:50 WB: 1:1000 IHC-P: 1:50-1:100 FC: 1:10-1:50

Anti-ALDH2 Antibody (M00546-4) Images



Western blot analysis of lysates from NCI-H292, A549, HepG2 cell line (from left to right), using ALDH2 Antibody (Cat. #M00546-4). M00546-4 was diluted at 1:1000 at each lane. A goat anti-mouse IgG H&L(HRP) at 1:3000 dilution was used as the secondary antibody. Lysates at 35ug per lane.



Confocal immunofluorescent analysis of ALDH2 Antibody (Cat#M00546-4) with HepG2 cells followed by Alexa Fluor® 488-conjugated goat anti-mouse IgG (green). DAPI was used to stain the cell nuclei (blue).

Submit a product review to [Biocompare.com](https://www.biocompare.com)

Submit a review of this product to [Biocompare.com](https://www.biocompare.com) to receive a \$20 Amazon.com giftcard! Your reviews help your fellow scientists make the right decisions. Thank you for your contribution.



Anti-ALDH2 Antibody

For Research Use Only. Not for use in diagnostic procedures.