

## Anti-AREB6/ZEB1 Antibody Picoband® (monoclonal, 8B12D7)

Catalog Number: M00548-2

### About ZEB1

ZEB1 (Zinc Finger E Box-Binding Homeobox 1), also called TCF8, NIL2A or DELTA-EF1, is a protein that in humans is encoded by the ZEB1 gene. Fluorescence in situ hybridization localized the ZEB1 gene to chromosome 10p11.2. Krafchak et al. (2005) demonstrated a complex (core plus secondary) binding site for TCF8 in the promoter of the COL4A3 gene, mutant in Alport syndrome and which encodes collagen type IV alpha-3. They detected expression of TCF8 in cornea. Nishimura et al. (2006) found that delta-Ef1 was upregulated during differentiation in a mouse smooth muscle cell (SMC) line.

### Overview

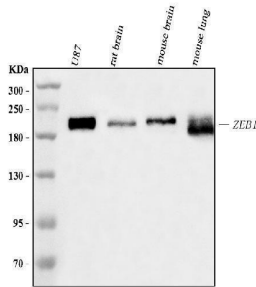
Product Name	Anti-AREB6/ZEB1 Antibody Picoband® (monoclonal, 8B12D7)
Reactive Species	Human, Mouse, Rat
Description	Boster Bio Anti-AREB6/ZEB1 Antibody Picoband® (monoclonal, 8B12D7) catalog # M00548-2. Tested in IF, IHC, ICC, WB applications. This antibody reacts with Human, Mouse, Rat. The brand Picoband indicates this is a premium antibody that guarantees superior quality, high affinity, and strong signals with minimal background in Western blot applications. Only our best-performing antibodies are designated as Picoband, ensuring unmatched performance.
Application	IF, IHC, ICC, WB
Clonality	Monoclonal 8B12D7
Formulation	Each vial contains 4 mg Trehalose, 0.9 mg NaCl and 0.2 mg Na <sub>2</sub> HPO <sub>4</sub> .
Storage Instructions	At -20°C for one year from date of receipt. After reconstitution, at 4°C for one month. It can also be aliquotted and stored frozen at -20°C for six months. Avoid repeated freezing and thawing.
Host	Mouse
Uniprot ID	P37275

### Technical Details

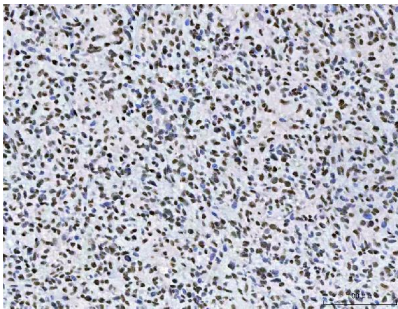
Immunogen	A synthetic peptide corresponding to a sequence in the middle region of human AREB6/ZEB1.
Recommended Detection Systems	Boster recommends Enhanced Chemiluminescent Kit with anti-Mouse IgG (EK1001) for Western blot, and HRP Conjugated anti-Mouse IgG Super Vision Assay Kit (SV0001-1) for IHC(P) and ICC.
Cross Reactivity	No cross-reactivity with other proteins.
Isotype	Mouse IgG2b
Form	Lyophilized
Concentration	Adding 0.2 ml of distilled water will yield a concentration of 500 ug/ml.

Purification	Immunogen affinity purified.
Suggested Dilutions	Western blot, 0.25-0.5 ug/ml, Human, Mouse, Rat Immunohistochemistry(Paraffin-embedded Section), 2-5 ug/ml, Human, Mouse, Rat Immunocytochemistry/Immunofluorescence, 5 ug/ml, Human Immunofluorescence, 5 ug/ml, Human

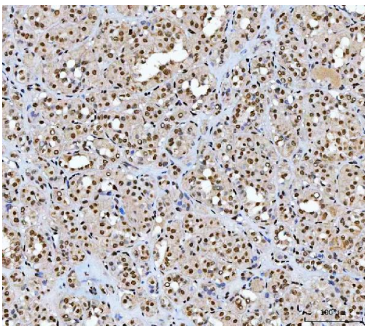
## Anti-AREB6/ZEB1 Antibody Picoband® (monoclonal, 8B12D7) (M00548-2) Images



Western blot analysis of AREB6/ZEB1 using anti-AREB6/ZEB1 antibody (M00548-2). Electrophoresis was performed on a 5-20% SDS-PAGE gel at 70V (Stacking gel) / 90V (Resolving gel) for 2-3 hours. The sample well of each lane was loaded with 30 ug of sample under reducing conditions. Lane 1: human U87 whole cell lysates, Lane 2: rat brain tissue lysates, Lane 3: mouse brain tissue lysates, Lane 4: mouse lung tissue lysates. After electrophoresis, proteins were transferred to a nitrocellulose membrane at 150 mA for 50-90 minutes. Blocked the membrane with 5% non-fat milk/TBS for 1.5 hour at RT. The membrane was incubated with mouse anti-AREB6/ZEB1 antigen affinity purified monoclonal antibody (Catalog # M00548-2) at 0.5 ug/mL overnight at 4°C, then washed with TBS-0.1%Tween 3 times with 5 minutes each and probed with a goat anti-mouse IgG-HRP secondary antibody at a dilution of 1:10000 for 1.5 hour at RT. The signal is developed using an Enhanced Chemiluminescent detection (ECL) kit (Catalog # EK1001) with Tanon 5200 system. A specific band was detected for AREB6/ZEB1 at approximately 200 kDa. The expected band size for AREB6/ZEB1 is at 124 kDa.

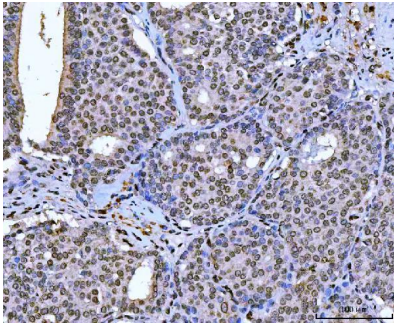


IHC analysis of AREB6/ZEB1 using anti-AREB6/ZEB1 antibody (M00548-2). AREB6/ZEB1 was detected in a paraffin-embedded section of human glioblastoma tissue. Heat mediated antigen retrieval was performed in EDTA buffer (pH 8.0, epitope retrieval solution). The tissue section was blocked with 10% goat serum. The tissue section was then incubated with 2 ug/ml mouse anti-AREB6/ZEB1 Antibody (M00548-2) overnight at 4°C. Peroxidase Conjugated Goat Anti-mouse IgG was used as secondary antibody and incubated for 30 minutes at 37°C. The tissue section was developed using HRP Conjugated Mouse IgG Super Vision Assay Kit (Catalog # SV0001) with DAB as the chromogen.

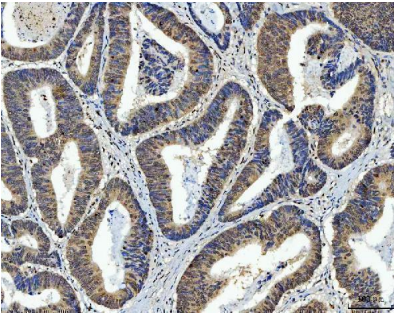


IHC analysis of AREB6/ZEB1 using anti-AREB6/ZEB1 antibody (M00548-2). AREB6/ZEB1 was detected in a paraffin-embedded section of human thyroid cancer tissue. Heat mediated antigen retrieval was performed in EDTA buffer (pH 8.0, epitope retrieval solution). The tissue section was blocked with 10% goat serum. The tissue section was then incubated with 2 ug/ml mouse anti-AREB6/ZEB1 Antibody (M00548-2) overnight at 4°C. Peroxidase Conjugated Goat Anti-mouse IgG was used as secondary antibody and incubated for 30 minutes at 37°C. The tissue section was developed using HRP Conjugated Mouse IgG Super Vision Assay Kit (Catalog # SV0001) with DAB as the chromogen.

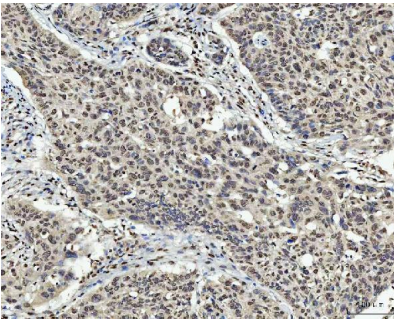
IHC analysis of AREB6/ZEB1 using anti-AREB6/ZEB1 antibody (M00548-2). AREB6/ZEB1 was detected in a paraffin-embedded section of human breast cancer tissue. Heat mediated antigen retrieval was performed in EDTA buffer



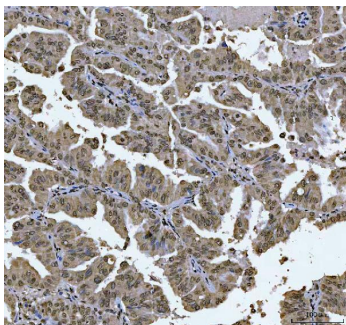
(pH 8.0, epitope retrieval solution). The tissue section was blocked with 10% goat serum. The tissue section was then incubated with 2 ug/ml mouse anti-AREB6/ZEB1 Antibody (M00548-2) overnight at 4°C. Peroxidase Conjugated Goat Anti-mouse IgG was used as secondary antibody and incubated for 30 minutes at 37°C. The tissue section was developed using HRP Conjugated Mouse IgG Super Vision Assay Kit (Catalog # SV0001) with DAB as the chromogen.



IHC analysis of AREB6/ZEB1 using anti-AREB6/ZEB1 antibody (M00548-2). AREB6/ZEB1 was detected in a paraffin-embedded section of human colorectal adenocarcinoma tissue. Heat mediated antigen retrieval was performed in EDTA buffer (pH 8.0, epitope retrieval solution). The tissue section was blocked with 10% goat serum. The tissue section was then incubated with 2 ug/ml mouse anti-AREB6/ZEB1 Antibody (M00548-2) overnight at 4°C. Peroxidase Conjugated Goat Anti-mouse IgG was used as secondary antibody and incubated for 30 minutes at 37°C. The tissue section was developed using HRP Conjugated Mouse IgG Super Vision Assay Kit (Catalog # SV0001) with DAB as the chromogen.

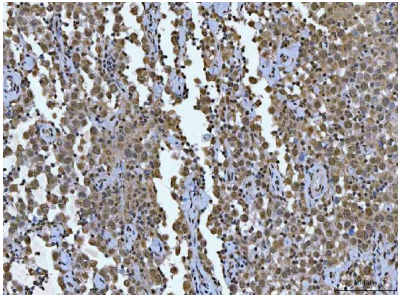


IHC analysis of AREB6/ZEB1 using anti-AREB6/ZEB1 antibody (M00548-2). AREB6/ZEB1 was detected in a paraffin-embedded section of human laryngeal squamous cell carcinoma tissue. Heat mediated antigen retrieval was performed in EDTA buffer (pH 8.0, epitope retrieval solution). The tissue section was blocked with 10% goat serum. The tissue section was then incubated with 2 ug/ml mouse anti-AREB6/ZEB1 Antibody (M00548-2) overnight at 4°C. Peroxidase Conjugated Goat Anti-mouse IgG was used as secondary antibody and incubated for 30 minutes at 37°C. The tissue section was developed using HRP Conjugated Mouse IgG Super Vision Assay Kit (Catalog # SV0001) with DAB as the chromogen.

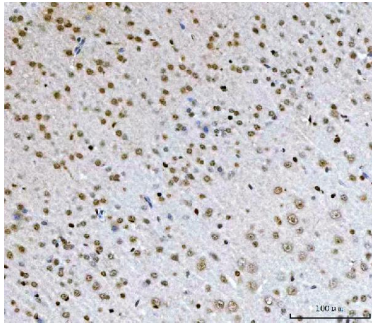


IHC analysis of AREB6/ZEB1 using anti-AREB6/ZEB1 antibody (M00548-2). AREB6/ZEB1 was detected in a paraffin-embedded section of human lung adenocarcinoma tissue. Heat mediated antigen retrieval was performed in EDTA buffer (pH 8.0, epitope retrieval solution). The tissue section was blocked with 10% goat serum. The tissue section was then incubated with 2 ug/ml mouse anti-AREB6/ZEB1 Antibody (M00548-2) overnight at 4°C. Peroxidase Conjugated Goat Anti-mouse IgG was used as secondary antibody and incubated for 30 minutes at 37°C. The tissue section was developed using HRP Conjugated Mouse IgG Super Vision Assay Kit (Catalog # SV0001) with DAB as the chromogen.

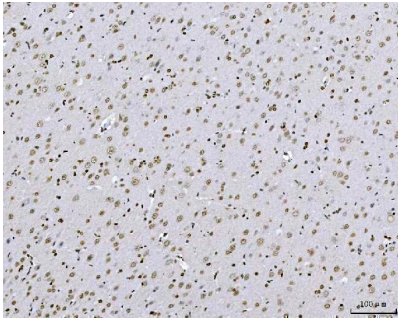
IHC analysis of AREB6/ZEB1 using anti-AREB6/ZEB1 antibody (M00548-2). AREB6/ZEB1 was detected in a paraffin-



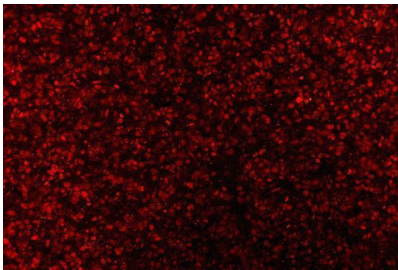
embedded section of human testicular germ cell tumor tissue. Heat mediated antigen retrieval was performed in EDTA buffer (pH 8.0, epitope retrieval solution). The tissue section was blocked with 10% goat serum. The tissue section was then incubated with 2 ug/ml mouse anti-AREB6/ZEB1 Antibody (M00548-2) overnight at 4°C. Peroxidase Conjugated Goat Anti-mouse IgG was used as secondary antibody and incubated for 30 minutes at 37°C. The tissue section was developed using HRP Conjugated Mouse IgG Super Vision Assay Kit (Catalog # SV0001) with DAB as the chromogen.



IHC analysis of AREB6/ZEB1 using anti-AREB6/ZEB1 antibody (M00548-2). AREB6/ZEB1 was detected in a paraffin-embedded section of mouse brain tissue. Heat mediated antigen retrieval was performed in EDTA buffer (pH 8.0, epitope retrieval solution). The tissue section was blocked with 10% goat serum. The tissue section was then incubated with 2 ug/ml mouse anti-AREB6/ZEB1 Antibody (M00548-2) overnight at 4°C. Peroxidase Conjugated Goat Anti-mouse IgG was used as secondary antibody and incubated for 30 minutes at 37°C. The tissue section was developed using HRP Conjugated Mouse IgG Super Vision Assay Kit (Catalog # SV0001) with DAB as the chromogen.

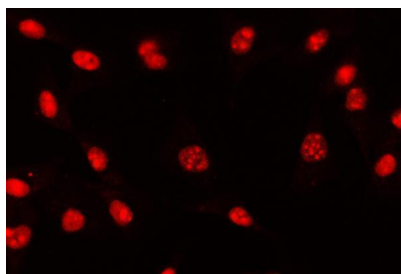


IHC analysis of AREB6/ZEB1 using anti-AREB6/ZEB1 antibody (M00548-2). AREB6/ZEB1 was detected in a paraffin-embedded section of rat brain tissue. Heat mediated antigen retrieval was performed in EDTA buffer (pH 8.0, epitope retrieval solution). The tissue section was blocked with 10% goat serum. The tissue section was then incubated with 2 ug/ml mouse anti-AREB6/ZEB1 Antibody (M00548-2) overnight at 4°C. Peroxidase Conjugated Goat Anti-mouse IgG was used as secondary antibody and incubated for 30 minutes at 37°C. The tissue section was developed using HRP Conjugated Mouse IgG Super Vision Assay Kit (Catalog # SV0001) with DAB as the chromogen.



IF analysis of AREB6/ZEB1 using anti-AREB6/ZEB1 antibody (M00548-2). AREB6/ZEB1 was detected in a paraffin-embedded section of human glioma tissue. Heat mediated antigen retrieval was performed in EDTA buffer (pH 8.0, epitope retrieval solution). The tissue section was blocked with 10% goat serum. The tissue section was then incubated with 5 ug/mL mouse anti-AREB6/ZEB1 Antibody (M00548-2) overnight at 4°C. Biotin conjugated goat anti-mouse IgG (BA1001) was used as secondary antibody and incubated for 30 minutes at 37°C. The tissue section was developed using DyLight®550 Conjugated Avidin (BA1134). Visualize using a fluorescence microscope and filter sets appropriate for the label used.

IF analysis of AREB6/ZEB1 using anti-AREB6/ZEB1 antibody (M00548-2). AREB6/ZEB1 was detected in an immunocytochemical section of U87 cells. Enzyme antigen retrieval was performed using IHC enzyme antigen retrieval



reagent (AR0022) for 15 mins. The cells were blocked with 10% goat serum. And then incubated with 5 ug/mL mouse anti-AREB6/ZEB1 Antibody (M00548-2) overnight at 4°C. DyLight® 550 Conjugated Goat Anti-Mouse IgG (BA1133) was used as secondary antibody at 1:500 dilution and incubated for 30 minutes at 37°C. Visualize using a fluorescence microscope and filter sets appropriate for the label used.

## Submit a product review to Biocompare.com

Submit a review of this product to Biocompare.com to receive a \$20 Amazon.com giftcard! Your reviews help your fellow scientists make the right decisions. Thank you for your contribution.



Anti-AREB6/ZEB1 Antibody (monoclonal, 8B12D7)

For Research Use Only. Not for use in diagnostic procedures.