

## Anti-GALE Mouse Monoclonal Antibody [Clone ID: OTI1C4]

Catalog Number: M00551

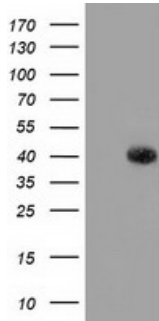
### Overview

Product Name	Anti-GALE Mouse Monoclonal Antibody [Clone ID: OTI1C4]
Reactive Species	Dog, Human, Monkey, Mouse, Rat
Description	Boster Bio GALE mouse monoclonal antibody, clone OTI1C4 (formerly 1C4). Catalog# M00551. Tested in IHC, WB. This antibody reacts with Human, Monkey, Mouse, Rat, Dog.
Application	IHC, WB
Clonality	Monoclonal OTI1C4
Formulation	PBS (pH 7.3) containing 1% stabilizing protein, 50% glycerol and 0.02% sodium azide. This antibody is supplied in a stabilized formulation. Compatibility with conjugation reactions depends on the chemistry of the conjugation method used. For conjugation methods that are not compatible with the stabilizing components present in this formulation, a carrier-free antibody format is required.
Storage Instructions	Store at -20°C as received.
Host	Mouse
Uniprot ID	Q14376

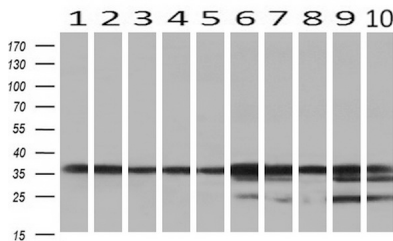
### Technical Details

Immunogen	Full length human recombinant protein of human GALE (NP_000394) produced in HEK293T cell.
Isotype	IgG1
Concentration	1 mg/ml
Purification	Purified from mouse ascites fluids or tissue culture supernatant by affinity chromatography (protein A/G)
Suggested Dilutions	WB: 1:500~2000 IHC: 1:150

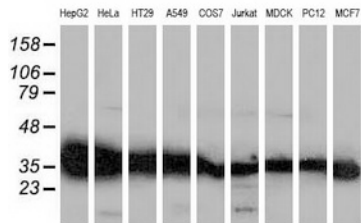
## Anti-GALE Mouse Monoclonal Antibody [Clone ID: OTI1C4] (M00551) Images



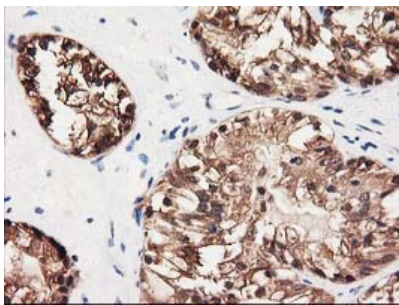
HEK293T cells were transfected with the pCMV6-ENTRY control (Left lane) or pCMV6-ENTRY GALE (Right lane) cDNA for 48 hrs and lysed. Equivalent amounts of cell lysates (5 ug per lane) were separated by SDS-PAGE and immunoblotted with anti-GALE.



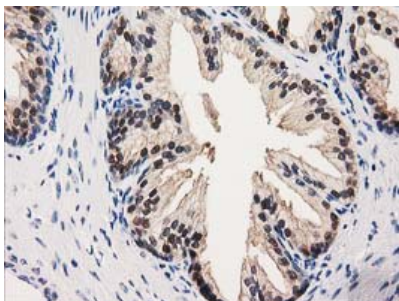
Western blot analysis of extracts (10ug) from 10 Human tissue by using anti-GALE monoclonal antibody at 1:200 (1: Testis; 2: Omentum; 3: Uterus; 4: Breast; 5: Brain; 6: Liver; 7: Ovary; 8: Thyroid gland; 9: colon; 10: spleen).



Western blot analysis of extracts (35ug) from 9 different cell lines by using anti-GALE monoclonal antibody (HepG2: human; HeLa: human; SVT2: mouse; A549: human; COS7: monkey; Jurkat: human; MDCK: canine; PC12: rat; MCF7: human).

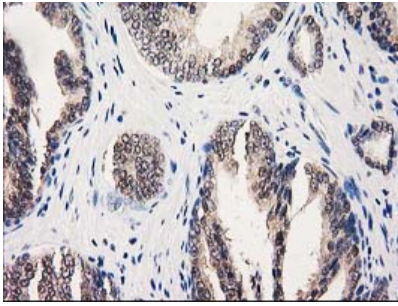


Immunohistochemical staining of paraffin-embedded Adenocarcinoma of Human ovary tissue using anti-GALE mouse monoclonal antibody. (Heat-induced epitope retrieval by 10mM citric buffer)

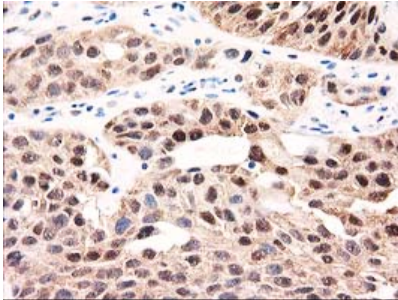


Immunohistochemical staining of paraffin-embedded Human prostate tissue within the normal limits using anti-GALE mouse monoclonal antibody. (Heat-induced epitope retrieval by 10mM citric buffer)

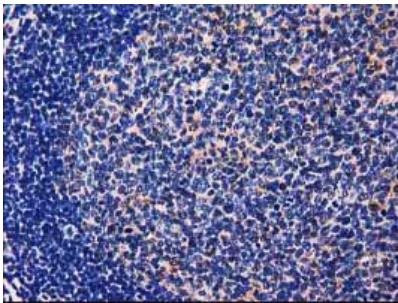
Immunohistochemical staining of paraffin-embedded



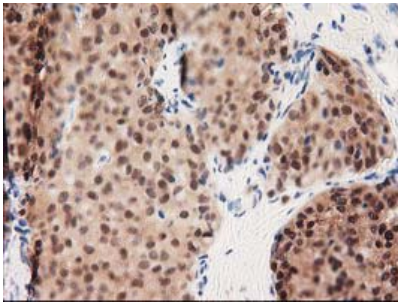
Carcinoma of Human prostate tissue using anti-GALE mouse monoclonal antibody. (Heat-induced epitope retrieval by 10mM citric buffer)



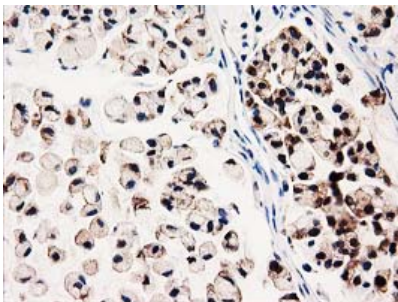
Immunohistochemical staining of paraffin-embedded Carcinoma of Human bladder tissue using anti-GALE mouse monoclonal antibody. (Heat-induced epitope retrieval by 10mM citric buffer)



Immunohistochemical staining of paraffin-embedded Human lymph node tissue within the normal limits using anti-GALE mouse monoclonal antibody. (Heat-induced epitope retrieval by 10mM citric buffer)

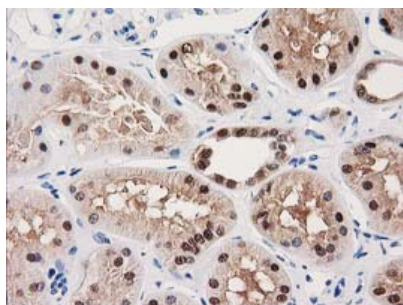


Immunohistochemical staining of paraffin-embedded Adenocarcinoma of Human breast tissue using anti-GALE mouse monoclonal antibody. (Heat-induced epitope retrieval by 10mM citric buffer)

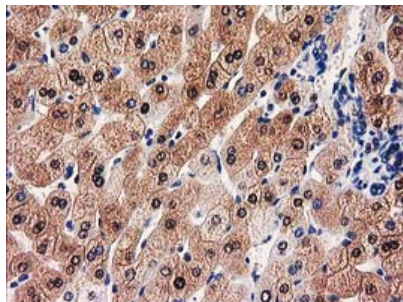


Immunohistochemical staining of paraffin-embedded Adenocarcinoma of Human colon tissue using anti-GALE mouse monoclonal antibody. (Heat-induced epitope retrieval by 10mM citric buffer)

Immunohistochemical staining of paraffin-embedded Human Kidney tissue within the normal limits using anti-GALE mouse monoclonal antibody. (Heat-induced epitope retrieval



by 10mM citric buffer



Immunohistochemical staining of paraffin-embedded Human liver tissue within the normal limits using anti-GALE mouse monoclonal antibody. (Heat-induced epitope retrieval by 10mM citric buffer)

## Submit a product review to [Biocompare.com](https://www.biocompare.com)

Submit a review of this product to [Biocompare.com](https://www.biocompare.com) to receive a \$20 Amazon.com giftcard! Your reviews help your fellow scientists make the right decisions. Thank you for your contribution.



Anti-GALE Mouse Monoclonal Antibody [Clone ID: OT11C4]

For Research Use Only. Not for use in diagnostic procedures.