

## Anti-CD45 PTPRC Rabbit Monoclonal Antibody, Clone#RM291

Catalog Number: M00555-2

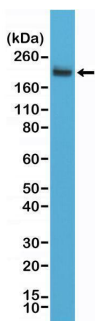
### Overview

Product Name	Anti-CD45 PTPRC Rabbit Monoclonal Antibody, Clone#RM291
Reactive Species	Human
Description	Boster Bio Anti-CD45 PTPRC Rabbit Monoclonal Antibody, Clone#RM291 (Catalog # M00555-2). Tested in IHC, WB applications. This antibody reacts with Human.
Application	IHC, WB
Clonality	Monoclonal RM291
Formulation	50% Glycerol/PBS with 1% stabilizing protein and 0.09% sodium azide This antibody is supplied in a stabilized formulation. Compatibility with conjugation reactions depends on the chemistry of the conjugation method used. For conjugation methods that are not compatible with the stabilizing components present in this formulation, a carrier-free antibody format is required.
Storage Instructions	Store at -20°C for one year. Avoid repeated freeze-thaw cycles.
Host	Rabbit
Uniprot ID	P08575

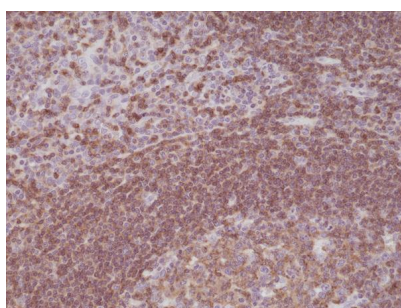
### Technical Details

Immunogen	A peptide corresponding to the C-terminus of human CD45 (Receptor-type tyrosine-protein phosphatase C).
Cross Reactivity	This antibody reacts to human CD45 (Receptor-type tyrosine-protein phosphatase C).
Isotype	Rabbit IgG
Form	Liquid
Concentration	0.5-1mg/ml, actual concentration vary by lot. Use suggested dilution ratio to decide dilution procedure.
Purification	Protein A affinity purified from an animal origin-free culture supernatant
Suggested Dilutions	Immunohistochemistry (IHC): 1:100-1:200 dilution WB: 1:1000-1:2000 dilution.

## Anti-CD45 PTPRC Rabbit Monoclonal Antibody, Clone#RM291 (M00555-2) Images



Western Blotting result  
Western Blot of Jurkat cell lysates using anti-CD45 rabbit monoclonal antibody (clone RM291) at a 1:2,000 dilution.



IHC result  
Immunohistochemical staining of formalin fixed and paraffin embedded human tonsil tissue sections using anti-CD45 rabbit monoclonal antibody (clone RM291) at a 1:200 dilution.

### Submit a product review to Biocompare.com

Submit a review of this product to Biocompare.com to receive a \$20 Amazon.com giftcard! Your reviews help your fellow scientists make the right decisions. Thank you for your contribution.



Anti-CD45 PTPRC Rabbit Monoclonal Antibody, Clone#RM291

For Research Use Only. Not for use in diagnostic procedures.