

Anti-DRP1 (DNM1L) Mouse Monoclonal Antibody [Clone ID: OTI3F4]

Catalog Number: M00556-1

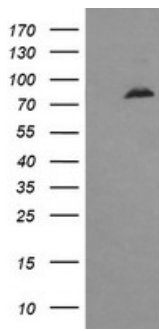
Overview

Product Name	Anti-DRP1 (DNM1L) Mouse Monoclonal Antibody [Clone ID: OTI3F4]
Reactive Species	Human, Mouse, Rat
Description	Boster Bio DNM1L mouse monoclonal antibody, clone OTI3F4 (formerly 3F4). Catalog# M00556-1. Tested in IF, IHC, WB. This antibody reacts with Human, Mouse, Rat.
Application	IF, IHC, WB
Clonality	Monoclonal OTI3F4
Formulation	PBS (PH 7.3) containing 1% BSA, 50% glycerol and 0.02% sodium azide.
Storage Instructions	Store at -20°C as received.
Host	Mouse
Uniprot ID	O00429

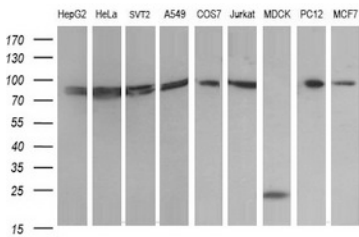
Technical Details

Immunogen	Full length human recombinant protein of human DNM1L (NP_036192) produced in HEK293T cell.
Isotype	IgG2b
Concentration	1 mg/ml
Purification	Purified from mouse ascites fluids or tissue culture supernatant by affinity chromatography (protein A/G)
Suggested Dilutions	Dilute the sample so that the expected range of concentrations fall within the detection range of this kit. If the expected range of concentration is unknown, a pilot test should be conducted to decide the optimal dilution ratio for your samples. Some PubMed article(s) citing the expression level of this target are as follows: For protocols, please visit https://www.bosterbio.com/protocol-and-troubleshooting/

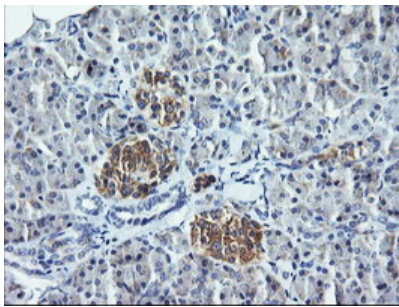
Anti-DRP1 (DNM1L) Mouse Monoclonal Antibody [Clone ID: OTI3F4] (M00556-1) Images



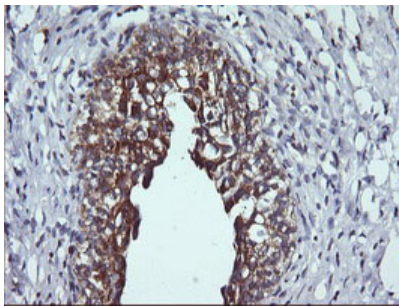
HEK293T cells were transfected with the pCMV6-ENTRY control (Left lane) or pCMV6-ENTRY DNM1L (Right lane) cDNA for 48 hrs and lysed. Equivalent amounts of cell lysates (5 ug per lane) were separated by SDS-PAGE and immunoblotted with anti-DNM1L.



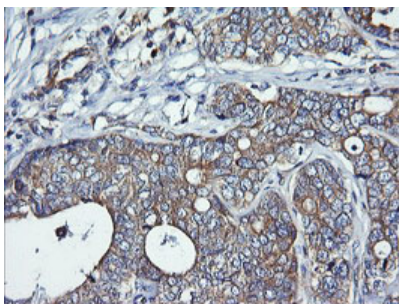
Western blot analysis of extracts (35ug) from 9 different cell lines by using anti-DNM1L monoclonal antibody (HepG2: human; HeLa: human; SVT2: mouse; A549: human; COS7: monkey; Jurkat: human; MDCK: canine; PC12: rat; MCF7: human) (1:200).



Immunohistochemical staining of paraffin-embedded Human pancreas tissue within the normal limits using anti-DNM1L mouse monoclonal antibody. (Heat-induced epitope retrieval by 10mM citric buffer)

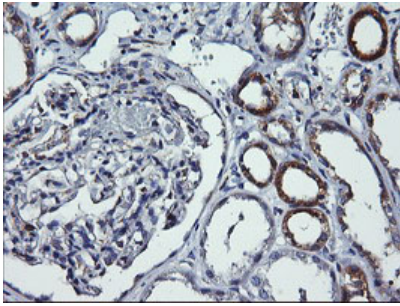


Immunohistochemical staining of paraffin-embedded Human bladder tissue within the normal limits using anti-DNM1L mouse monoclonal antibody. (Heat-induced epitope retrieval by 10mM citric buffer)

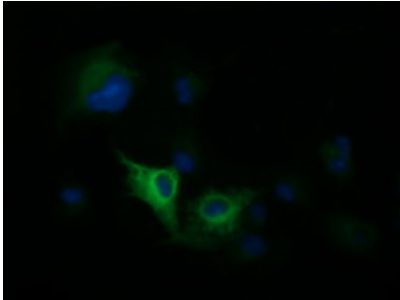


Immunohistochemical staining of paraffin-embedded Adenocarcinoma of Human breast tissue using anti-DNM1L mouse monoclonal antibody. (Heat-induced epitope retrieval by 10mM citric buffer)

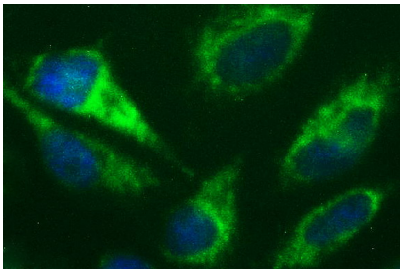
Immunohistochemical staining of paraffin-embedded Human Kidney tissue within the normal limits using anti-DNM1L mouse monoclonal antibody. (Heat-induced epitope retrieval



by 10mM citric buffer



Anti-DNM1L mouse monoclonal antibody (M00556-1) immunofluorescent staining of COS7 cells transiently transfected by pCMV6-ENTRY DNM1L.



Immunofluorescent staining of HeLa cells using anti-DNM1L mouse monoclonal antibody (M00556-1).

Submit a product review to Biocompare.com

Submit a review of this product to Biocompare.com to receive a \$20 Amazon.com giftcard! Your reviews help your fellow scientists make the right decisions. Thank you for your contribution.



Anti-DRP1 (DNM1L) Mouse Monoclonal Antibody [Clone ID: OT13F4]