

Anti-DRP1 (DNM1L) Mouse Monoclonal Antibody [Clone ID: OTI4F6]

Catalog Number: M00556-2

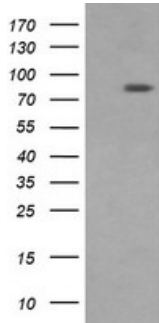
Overview

Product Name	Anti-DRP1 (DNM1L) Mouse Monoclonal Antibody [Clone ID: OTI4F6]
Reactive Species	Dog, Human, Monkey, Mouse, Rat
Description	Boster Bio DNM1L mouse monoclonal antibody, clone OTI4F6 (formerly 4F6). Catalog# M00556-2. Tested in IHC, WB. This antibody reacts with Human, Monkey, Mouse, Rat, Dog.
Application	IHC, WB
Clonality	Monoclonal OTI4F6
Formulation	PBS (pH 7.3) containing 1% stabilizing protein, 50% glycerol and 0.02% sodium azide. This antibody is supplied in a stabilized formulation. Compatibility with conjugation reactions depends on the chemistry of the conjugation method used. For conjugation methods that are not compatible with the stabilizing components present in this formulation, a carrier-free antibody format is required.
Storage Instructions	Store at -20°C as received.
Host	Mouse
Uniprot ID	O00429

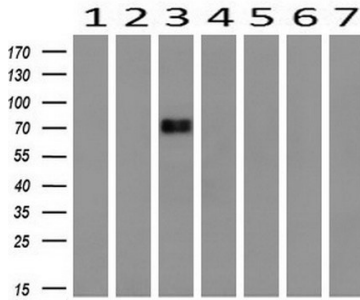
Technical Details

Immunogen	Full length human recombinant protein of human DNM1L (NP_036192) produced in HEK293T cell.
Isotype	IgG2b
Concentration	1 mg/ml
Purification	Purified from mouse ascites fluids or tissue culture supernatant by affinity chromatography (protein A/G)
Suggested Dilutions	WB 1:200~4000 IHC 1:150

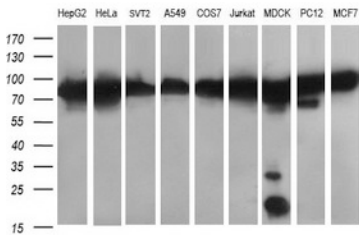
Anti-DRP1 (DNM1L) Mouse Monoclonal Antibody [Clone ID: OTI4F6] (M00556-2) Images



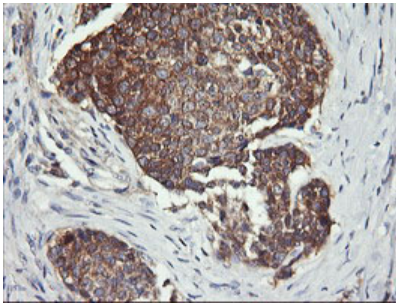
HEK293T cells were transfected with the pCMV6-ENTRY control (Left lane) or pCMV6-ENTRY DNM1L (Right lane) cDNA for 48 hrs and lysed. Equivalent amounts of cell lysates (5 ug per lane) were separated by SDS-PAGE and immunoblotted with anti-DNM1L.



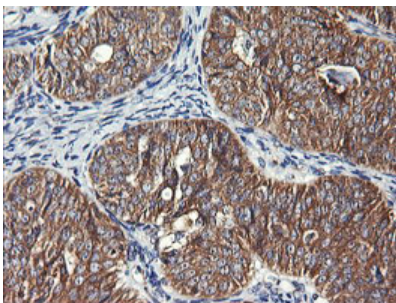
Western blot analysis of extracts (10ug) from 7 Human tissue by using anti-DNM1L monoclonal antibody (1: Uterus; 2: Breast; 3: Brain; 4: Liver; 5: Ovary; 6: Thyroid gland; 7: colon) at 1:200 dilution.



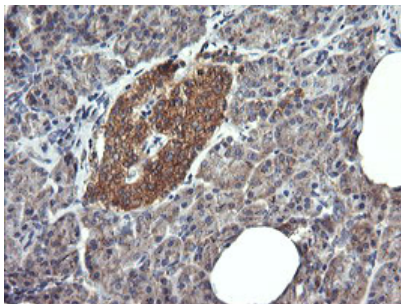
Western blot analysis of extracts (35ug) from 9 different cell lines by using anti-DNM1L monoclonal antibody (HepG2: human; HeLa: human; SVT2: mouse; A549: human; COS7: monkey; Jurkat: human; MDCK: canine; PC12: rat; MCF7: human).



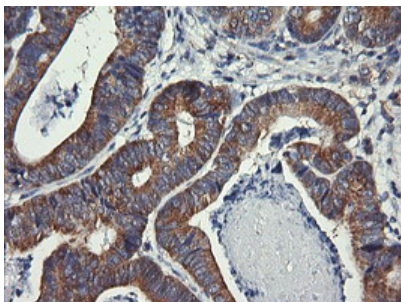
Immunohistochemical staining of paraffin-embedded Carcinoma of Human lung tissue using anti-DNM1L mouse monoclonal antibody. (Heat-induced epitope retrieval by 10mM citric buffer)



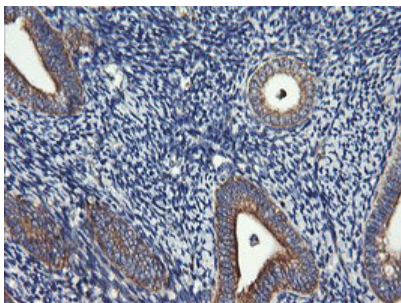
Immunohistochemical staining of paraffin-embedded Adenocarcinoma of Human ovary tissue using anti-DNM1L mouse monoclonal antibody. (Heat-induced epitope retrieval by 10mM citric buffer)



Immunohistochemical staining of paraffin-embedded Human pancreas tissue within the normal limits using anti-DNM1L mouse monoclonal antibody. (Heat-induced epitope retrieval by 10mM citric buffer)



Immunohistochemical staining of paraffin-embedded Carcinoma of Human pancreas tissue using anti-DNM1L mouse monoclonal antibody. (Heat-induced epitope retrieval by 10mM citric buffer)



Immunohistochemical staining of paraffin-embedded Human endometrium tissue within the normal limits using anti-DNM1L mouse monoclonal antibody. (Heat-induced epitope retrieval by 10mM citric buffer)

Submit a product review to [Biocompare.com](https://www.biocompare.com)

Submit a review of this product to [Biocompare.com](https://www.biocompare.com) to receive a \$20 Amazon.com giftcard! Your reviews help your fellow scientists make the right decisions. Thank you for your contribution.



Anti-DRP1 (DNM1L) Mouse Monoclonal Antibody [Clone ID: OTI4F6]

For Research Use Only. Not for use in diagnostic procedures.