

## Anti-Fibronectin Rabbit Monoclonal Antibody

Catalog Number: M00564-7

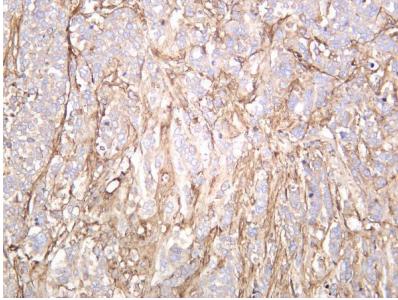
### Overview

Product Name	Anti-Fibronectin Rabbit Monoclonal Antibody
Reactive Species	Human, Mouse, Rat
Description	This Recombinant Rabbit Monoclonal Antibody detects endogenous levels of Fibronectin protein. Validated for research with WB,IHC,IF,IP,ELISA applications. Anti Fibronectin is reactive for Human, Mouse, Rat samples
Application	ELISA, IP, IF, IHC, WB
Clonality	Monoclonal
Formulation	PBS, 50% glycerol, 0.05% Proclin 300, 0.05% stabilizing protein This antibody is supplied in a stabilized formulation. Compatibility with conjugation reactions depends on the chemistry of the conjugation method used. For conjugation methods that are not compatible with the stabilizing components present in this formulation, a carrier-free antibody format is required.
Storage Instructions	Store at -20°C/1 year
Host	Rabbit
Uniprot ID	P02751

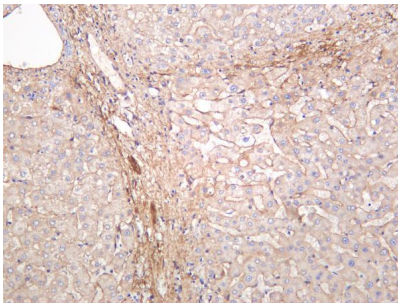
### Technical Details

Isotype	IgG, Kappa
Purification	Protein A
Suggested Dilutions	IHC 1:1000-1:5000 WB 1:2000-1:10000 IF 1:200-1:1000 ELISA 1:5000-1:20000 IP 1:50-1:200

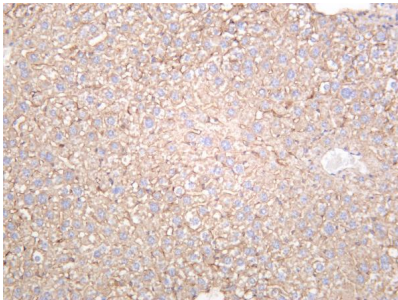
## Anti-Fibronectin Rabbit Monoclonal Antibody (M00564-7) Images



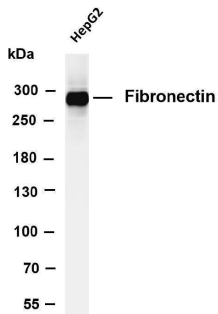
Human breast was stained with anti-Fibronectin rabbit antibody



Human liver was stained with anti-Fibronectin rabbit antibody



Mouse liver was stained with anti-Fibronectin rabbit antibody



Various whole cell lysates were separated by 4-8% SDS-PAGE, and the membrane was blotted with anti-Fibronectin antibody. The HRP-conjugated Goat anti-Rabbit IgG(H + L) antibody was used to detect the antibody. Lane 1: HepG2  
Predicted band size: 263kDa Observed band size: 285kDa

Submit a product review to [Biocompare.com](https://www.biocompare.com)

Submit a review of this product to [Biocompare.com](https://www.biocompare.com) to receive a \$20 Amazon.com giftcard! Your reviews help your fellow scientists make the right decisions. Thank you for your contribution.



Anti-Fibronectin Rabbit Monoclonal Antibody

For Research Use Only. Not for use in diagnostic procedures.