

## Anti-HLA-DRB (MHC II) HLA-DRB1 Monoclonal Antibody

Catalog Number: M00568

### About HLA-DRB1

This monoclonal antibody reacts with a 28kDa chain of HLA-DRB1 antigen, a member of MHC class II molecules. It does not cross react with HLA-DP and HLA-DQ. The L243 antibody recognizes a different epitope than the LN3 monoclonal antibody, and these antibodies do not cross-block binding to each other's respective epitopes. HLA-DR is a heterodimeric cell surface glycoprotein comprised of a 36kDa alpha (heavy) chain and a 28kDa beta (light) chain. It is expressed on B-cells, activated T-cells, monocytes/macrophages, dendritic cells and other non-professional APCs. In conjunction with the CD3/TCR complex and CD4 molecules, HLA-DR is critical for efficient peptide presentation to CD4+ T cells. It is an excellent histiocytic marker in paraffin sections producing intense staining. True histiocytic neoplasms are similarly positive. HLA-DR antigens also occur on a variety of epithelial cells and their corresponding neoplastic counterparts. Loss of HLA-DR expression is related to tumor microenvironment and predicts adverse outcome in diffuse large B-cell lymphoma.

### Overview

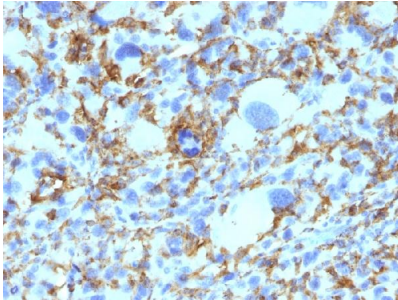
Product Name	Anti-HLA-DRB (MHC II) HLA-DRB1 Monoclonal Antibody
Reactive Species	Human, Monkey
Description	Boster Bio Anti-HLA-DRB (MHC II) HLA-DRB1 Monoclonal Antibody (Catalog # M00568). Tested in Flow Cytometry, IF, WB, IHC applications. This antibody reacts with Human, Monkey.
Conjugate	Biotin
Application	Flow Cytometry, IF, IHC, WB
Clonality	Monoclonal Clone: SPM423
Formulation	Prepared in 10mM PBS with 0.05% BSA & 0.05% azide. Also available WITHOUT BSA & azide at 1.0mg/ml.
Storage Instructions	Antibody with azide - store at 2 to 8°C. Antibody without azide - store at -20 to -80°C. Antibody is stable for 24 months. Non-hazardous. No MSDS required.
Host	Mouse
Uniprot ID	P01911

### Technical Details

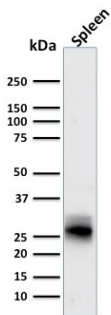
Immunogen	Activated human peripheral blood mononuclear cells
Predicted Reactive Species	Bovine, Canine, Mouse, Orangutan, Pig, Rabbit, Rat, Deer
Cross Reactivity	Does not cross-react with primate, avian or amphibian GR.
Isotype	IgG2b, kappa

Form	Liquid
Concentration	Purified antibody with BSA and azide at 200ug/ml
Purification	200ug/ml of antibody purified from Bioreactor Concentrate by Protein A/G.
Suggested Dilutions	<p>Dilute the sample so that the expected range of concentrations fall within the detection range of this kit.</p> <p>If the expected range of concentration is unknown, a pilot test should be conducted to decide the optimal dilution ratio for your samples.</p> <p>Some PubMed article(s) citing the expression level of this target are as follows:</p> <p>Boster Bio's internal QC testing used:</p> <p>Flow Cytometry (1-2ug/million cells)</p> <p>Immunofluorescence (1-2ug/ml)</p> <p>Western Blot (1-2ug/ml)</p> <p>Immunohistochemistry (Formalin-fixed) (0.25-0.5ug/ml for 30 minutes at RT)(Staining of formalin-fixed tissues requires heating tissue sections in 10mM Tris with 1mM EDTA, pH 9.0, for 45 min at 95&amp;degC followed by cooling at RT for 20 minutes)</p> <p>Optimal dilution for a specific application should be determined.</p>

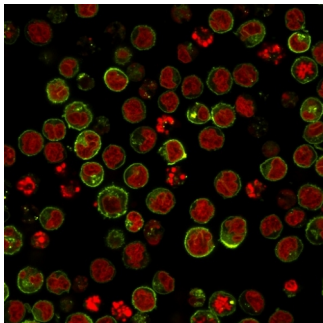
## Anti-HLA-DRB (MHC II) HLA-DRB1 Monoclonal Antibody (M00568) Images



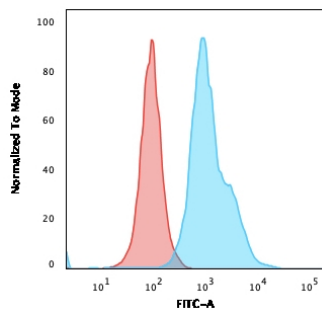
Formalin-fixed, paraffin-embedded human Histiocytoma stained with Anti-HLA-DR Monoclonal Antibody (SPM423).



Western Blot analysis of human Spleen tissue lysate using Anti-HLA-DR Monoclonal Antibody (SPM423).



Immunofluorescence analysis of Raji cells labeling HLA-DR with HLA-DR Monoclonal Antibody (SPM423) conjugated with CF594 (Green). The nuclear counterstain is Reddot (Red)



Flow Cytometric analysis of human Raji cells using HLA-DR MAb (SPM423) followed by Goat anti-Mouse IgG-CF488 (Blue); Isotype Control (Red).

**Submit a product review to Biocompare.com**

Submit a review of this product to Biocompare.com to receive a \$20 Amazon.com giftcard! Your reviews help your fellow scientists make the right decisions. Thank you for your contribution.



## Anti-HLA-DRB (MHC II) HLA-DRB1 Monoclonal Antibody