

Anti-CD2 Mouse Monoclonal Antibody [Clone ID: OTI1C5]

Catalog Number: M00570-2

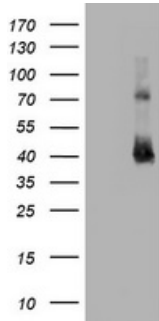
Overview

Product Name	Anti-CD2 Mouse Monoclonal Antibody [Clone ID: OTI1C5]
Reactive Species	Dog, Human, Mouse, Rat
Description	Boster Bio CD2 mouse monoclonal antibody, clone OTI1C5 (formerly 1C5). Catalog# M00570-2. Tested in FC, IHC, WB. This antibody reacts with Human, Mouse, Rat, Dog.
Application	Flow Cytometry, IHC, WB
Clonality	Monoclonal OTI1C5
Formulation	PBS (pH 7.3) containing 1% stabilizing protein, 50% glycerol and 0.02% sodium azide. This antibody is supplied in a stabilized formulation. Compatibility with conjugation reactions depends on the chemistry of the conjugation method used. For conjugation methods that are not compatible with the stabilizing components present in this formulation, a carrier-free antibody format is required.
Storage Instructions	Store at -20°C as received.
Host	Mouse
Uniprot ID	P06729

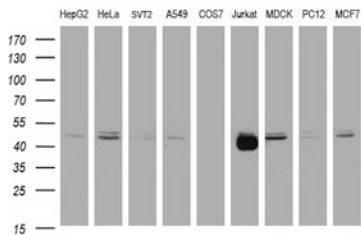
Technical Details

Immunogen	Full length human recombinant protein of human CD2 (NP_001758) produced in HEK293T cell.
Isotype	IgG1
Concentration	1 mg/ml
Purification	Purified from mouse ascites fluids or tissue culture supernatant by affinity chromatography (protein A/G)
Suggested Dilutions	WB: 1:2000~4000 IHC: 1:500 Flow Cytometry: 1:100

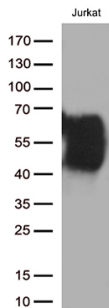
Anti-CD2 Mouse Monoclonal Antibody [Clone ID: OTI1C5] (M00570-2) Images



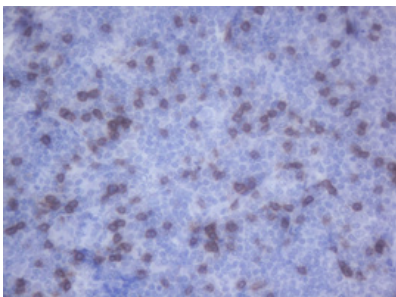
HEK293T cells were transfected with the pCMV6-ENTRY control (Left lane) or pCMV6-ENTRY CD2 (Right lane) cDNA for 48 hrs and lysed. Equivalent amounts of cell lysates (5 ug per lane) were separated by SDS-PAGE and immunoblotted with anti-CD2 (1:4000).



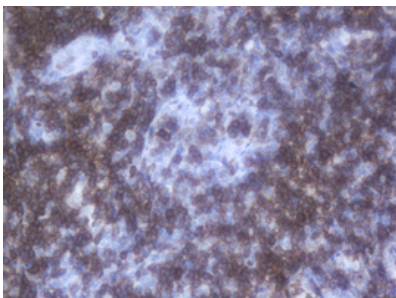
Western blot analysis of extracts (35ug) from 9 different cell lines by using anti-CD2 monoclonal antibody (HepG2: human; HeLa: human; SVT2: mouse; A549: human; COS7: monkey; Jurkat: human; MDCK: canine; PC12: rat; MCF7: human).



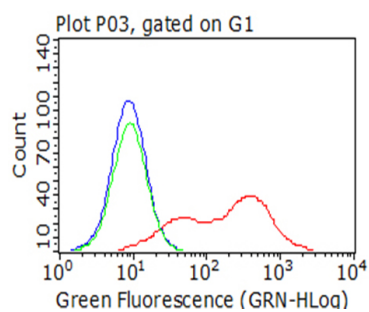
Western blot analysis of extracts (35ug) from 1 cell line lysate by using anti-CD2 monoclonal antibody (1:500).



Immunohistochemical staining of paraffin-embedded Human lymphoma tissue using anti-CD2 mouse monoclonal antibody. (Heat-induced epitope retrieval by 10mM citric buffer)



Immunohistochemical staining of paraffin-embedded Human tonsil within the normal limits using anti-CD2 mouse monoclonal antibody. (Heat-induced epitope retrieval by 10mM citric buffer)



Flow cytometric analysis of living 293T cells transfected with CD2 overexpression plasmid/empty vector (Blue) using anti-CD2 antibody (M00570-2). Cells incubated with a non-specific antibody (Green) were used as isotype control (1:100).

Submit a product review to Biocompare.com

Submit a review of this product to Biocompare.com to receive a \$20 Amazon.com giftcard! Your reviews help your fellow scientists make the right decisions. Thank you for your contribution.



Anti-CD2 Mouse Monoclonal Antibody [Clone ID: OTI1C5]

For Research Use Only. Not for use in diagnostic procedures.