

Anti-XRCC1 Rabbit Monoclonal Antibody

Catalog Number: M00571

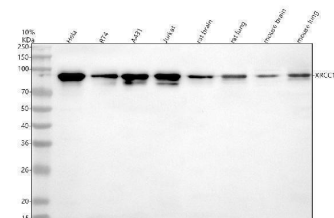
Overview

Product Name	Anti-XRCC1 Rabbit Monoclonal Antibody
Reactive Species	Human, Mouse, Rat
Description	Boster Bio Anti-XRCC1 Rabbit Monoclonal Antibody catalog # M00571. Tested in WB, IHC, ICC/IF applications. This antibody reacts with Human, Mouse, Rat.
Application	IF, IHC, ICC, WB
Clonality	Monoclonal ABOH-24
Formulation	Rabbit IgG in stabilizing components, phosphate buffered saline, pH 7.4, 150mM NaCl, 0.02% sodium azide and 50% glycerol. *This antibody is supplied in a stabilized formulation. Compatibility with conjugation reactions depends on the chemistry of the conjugation method used. For conjugation methods that are not compatible with the stabilizing components present in this formulation, a carrier-free antibody format is required.
Storage Instructions	Store at -20°C for one year. For short term storage and frequent use, store at 4°C for up to one month. Avoid repeated freeze-thaw cycles.
Host	Rabbit
Uniprot ID	P18887

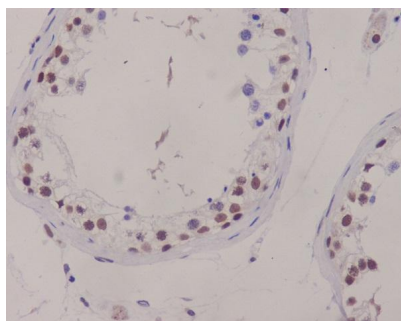
Technical Details

Immunogen	A synthesized peptide derived from human XRCC1
Isotype	Rabbit IgG
Form	Liquid
Concentration	0.5mg/ml
Purification	Affinity-chromatography
Suggested Dilutions	WB 1:500-2000 IHC 1:50-200 ICC/IF 1:50-200

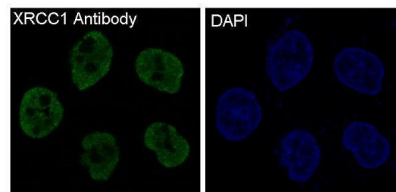
Anti-XRCC1 Rabbit Monoclonal Antibody (M00571) Images



Western blot analysis of XRCC1 using anti-XRCC1 antibody (M00571). Electrophoresis was performed on a 10% SDS-PAGE gel at 80V (Stacking gel) / 120V (Resolving gel) for 2 hours. The sample well of each lane was loaded with 30 ug of sample under reducing conditions. Lane 1: human HeLa whole cell lysates, Lane 2: human RT4 whole cell lysates, Lane 3: human A431 whole cell lysates, Lane 4: human Jurkat whole cell lysates, Lane 5: rat brain tissue lysates, Lane 6: rat lung tissue lysates, Lane 7: mouse brain tissue lysates, Lane 8: mouse lung tissue lysates. After electrophoresis, proteins were transferred to a nitrocellulose membrane at 150 mA for 50-90 minutes. Blocked the membrane with 5% non-fat milk/TBS for 1.5 hour at RT. The membrane was incubated with rabbit anti-XRCC1 antigen affinity purified monoclonal antibody (M00571) at 1:500 overnight at 4°C, then washed with TBS-0.1% Tween 3 times with 5 minutes each and probed with a goat anti-rabbit IgG-HRP secondary antibody at a dilution of 1:5000 for 1.5 hour at RT. The signal is developed using an ECL Plus Western Blotting Substrate (Catalog # AR1196-200) with Tanon 5200 system. A specific band was detected for XRCC1 at approximately 90 kDa. The expected band size for XRCC1 is at 69 kDa.



Immunohistochemical analysis of paraffin-embedded human testis, using XRCC1 Antibody.



Immunofluorescent analysis of HeLa cells, using XRCC1 Antibody .

1 Publications Citing This Product

1. PubMed ID: 29156789, Meng Q, Wang S, Tang W, Wu S, Gao N, Zhang C, Cao X, Li X, Zhang Z, Aschner M, Jin H, Huang Y, Chen R. Oncotarget. 2017 Sep 16;8(49):86217-86226. doi: 10.18632/oncotarget.21040. eCollection 2017 Oct 17. XRCC1 mediated the development of cervical c...

Visit bosterbio.com/anti-xrcc1-rabbit-monoclonal-antibody-m00571-boster.html to see all 1 publications.

Submit a product review to Biocompare.com

Submit a review of this product to Biocompare.com to receive a \$20 Amazon.com giftcard! Your reviews help your fellow scientists make the right decisions. Thank you for your contribution.



Anti-XRCC1 Rabbit Monoclonal Antibody

For Research Use Only. Not for use in diagnostic procedures.