

## Anti-CREB CREB1 Rabbit Monoclonal Antibody

Catalog Number: M00577

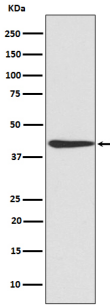
### Overview

Product Name	Anti-CREB CREB1 Rabbit Monoclonal Antibody
Reactive Species	Human, Mouse, Rat
Description	Boster Bio Anti-CREB CREB1 Rabbit Monoclonal Antibody catalog # M00577. Tested in WB, IHC, ICC/IF, IP, Flow Cytometry applications. This antibody reacts with Human, Mouse, Rat.
Application	Flow Cytometry, IP, IF, IHC, ICC, WB
Clonality	Monoclonal DCO-3
Formulation	Rabbit IgG in stabilizing components, phosphate buffered saline, pH 7.4, 150mM NaCl, 0.02% sodium azide and 50% glycerol. *This antibody is supplied in a stabilized formulation. Compatibility with conjugation reactions depends on the chemistry of the conjugation method used. For conjugation methods that are not compatible with the stabilizing components present in this formulation, a carrier-free antibody format is required.
Storage Instructions	Store at -20°C for one year. For short term storage and frequent use, store at 4°C for up to one month. Avoid repeated freeze-thaw cycles.
Host	Rabbit
Uniprot ID	P16220

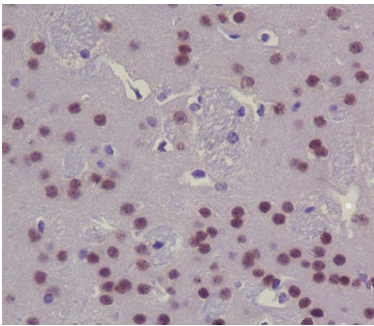
### Technical Details

Immunogen	A synthesized peptide derived from human CREB
Isotype	Rabbit IgG
Form	Liquid
Concentration	0.5mg/ml
Purification	Affinity-chromatography
Suggested Dilutions	WB 1:500-1:2000 IHC 1:50-1:200 ICC/IF 1:50-1:200 IP 1:50 FC 1:50

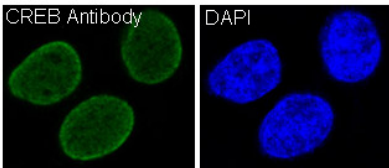
## Anti-CREB CREB1 Rabbit Monoclonal Antibody (M00577) Images



Western blot analysis of CREB expression in NIH/3T3 cell lysate.



Immunohistochemical analysis of paraffin-embedded mouse brain, using CREB Antibody.



Immunofluorescent analysis of HeLa cells, using CREB Antibody .

## 2 Publications Citing This Product

1. PubMed ID: 33242618, Lin S,Li Q,Jiang S,Xu Z,Jiang Y,Liu L,Jiang J,Tong Y,Wang P.Crocetin ameliorates chronic restraint stress-induced depression-like behaviors in mice by regulating MEK/ERK pathways and gut microbiota. J Ethnopharmacol.2020 Nov 23:113608.doi:10.1016/j.jep.20

2. PubMed ID: 24289115, LncRNA DQ786243 affects Treg related CREB and Foxp3 expression in Crohn's disease

Visit [bosterbio.com/anti-creb-rabbit-monoclonal-antibody-m00577-boster.html](https://www.bosterbio.com/anti-creb-rabbit-monoclonal-antibody-m00577-boster.html) to see all 2 publications.

## Submit a product review to Biocompare.com

Submit a review of this product to Biocompare.com to receive a \$20 Amazon.com giftcard! Your reviews help your fellow scientists make the right decisions. Thank you for your contribution.



Anti-CREB CREB1 Rabbit Monoclonal Antibody

For Research Use Only. Not for use in diagnostic procedures.