

Anti-(Mouse) Suz12 Antibody (Center)

Catalog Number: M00583-2

About Suz12

Polycomb group (PcG) protein. Component of the PRC2/EED- EZH2 complex, which methylates 'Lys-9' (H3K9me) and 'Lys-27' (H3K27me) of histone H3, leading to transcriptional repression of the affected target gene. The PRC2/EED-EZH2 complex may also serve as a recruiting platform for DNA methyltransferases, thereby linking two epigenetic repression systems (By similarity). Genes repressed by the PRC2/EED-EZH2 complex include HOXA7, HOXB6 and HOXC8.

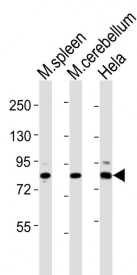
Overview

Product Name	Anti-(Mouse) Suz12 Antibody (Center)
Reactive Species	Human, Mouse
Description	Boster Bio Anti-(Mouse) Suz12 Antibody (Center) (Catalog # M00583-2). Tested in WB, IHC-P application(s). This antibody reacts with Human, Mouse.
Application	IHC-P, WB
Clonality	Polyclonal
Formulation	Purified polyclonal antibody supplied in PBS with 0.09% (W/V) sodium azide.
Storage Instructions	Maintain refrigerated at 2-8°C for up to 2 weeks. For long-term storage, store at -20°C in small aliquots to prevent freeze-thaw cycles.
Host	Rabbit
Uniprot ID	Q80U70

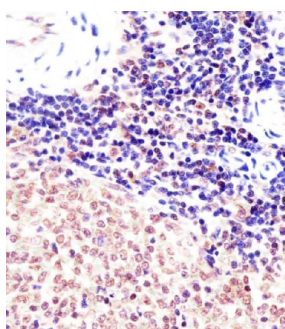
Technical Details

Immunogen	This mouse Suz12 antibody is generated from a rabbit immunized with a KLH conjugated synthetic peptide between 381-395 amino acids from the Central region of mouse Suz12.
Predicted Reactive Species	Bovine, Mouse
Isotype	Rabbit IgG
Purification	This antibody is purified through a protein A column, followed by peptide affinity purification.
Suggested Dilutions	WB: 1:2000 IHC-P: 1:25

Anti-(Mouse) Suz12 Antibody (Center) (M00583-2) Images



All lanes : Anti-Suz12 Antibody (Center) at 1:2000 dilution
Lane 1: mouse spleen lysates
Lane 2: mouse cerebellum lysates
Lane 3: HeLa whole cell lysates
Lysates/proteins at 20 μ g per lane. Secondary Goat Anti-Rabbit IgG, (H+L), Peroxidase conjugated at 1/10000 dilution
Predicted band size : 83 kDa
Blocking/Dilution buffer: 5% NFDN/TBST.



M00583-2 staining (Mouse) Suz12 in mouse spleen sections by Immunohistochemistry (IHC-P -paraformaldehyde-fixed, paraffin-embedded sections). Tissue was fixed with formaldehyde and blocked with 3% BSA for 0.5 hour at room temperature; antigen retrieval was by heat mediation with a citrate buffer (pH6). Samples were incubated with primary antibody (1/25) for 1 hours at 37°C. A undiluted biotinylated goat polyvalent antibody was used as the secondary antibody.

Submit a product review to [Biocompare.com](https://www.biocompare.com)

Submit a review of this product to [Biocompare.com](https://www.biocompare.com) to receive a \$20 Amazon.com giftcard! Your reviews help your fellow scientists make the right decisions. Thank you for your contribution.



Anti-(Mouse) Suz12 Antibody (Center)

For Research Use Only. Not for use in diagnostic procedures.