

## Anti-SAMHD1 Mouse Monoclonal Antibody [Clone ID: OT11A1]

Catalog Number: M00592-1

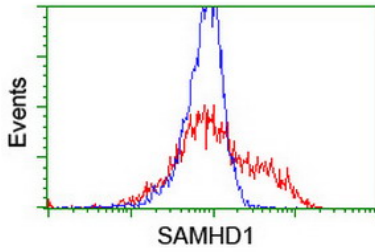
### Overview

Product Name	Anti-SAMHD1 Mouse Monoclonal Antibody [Clone ID: OT11A1]
Reactive Species	Human, Monkey, Mouse, Rat
Description	Boster Bio SAMHD1 mouse monoclonal antibody, clone OT11A1 (formerly 1A1). Catalog# M00592-1. Tested in FC, IF, IHC, WB. This antibody reacts with Human, Monkey, Mouse, Rat.
Conjugate	Unconjugated
Application	Flow Cytometry, IF, IHC, WB
Clonality	Monoclonal OT11A1
Formulation	PBS (pH 7.3) containing 1% stabilizing protein, 50% glycerol and 0.02% sodium azide. This antibody is supplied in a stabilized formulation. Compatibility with conjugation reactions depends on the chemistry of the conjugation method used. For conjugation methods that are not compatible with the stabilizing components present in this formulation, a carrier-free antibody format is required.
Storage Instructions	Store at -20°C for one year. For short term storage and frequent use, store at 4°C for up to one month. Avoid repeated freeze-thaw cycles.
Host	Mouse
Uniprot ID	Q9Y3Z3

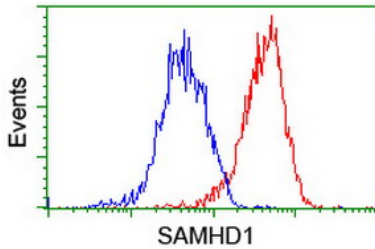
### Technical Details

Immunogen	Full length human recombinant protein of human SAMHD1 (NP_056289) produced in HEK293T cell.
Isotype	IgG2b
Concentration	1 mg/ml
Purification	Purified from mouse ascites fluids or tissue culture supernatant by affinity chromatography (protein A/G)
Suggested Dilutions	WB 1:500~2000 IHC 1:150 IF 1:100 Flow Cytometry 1:100

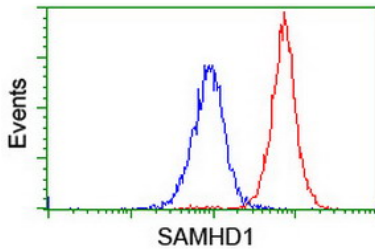
## Anti-SAMHD1 Mouse Monoclonal Antibody [Clone ID: OTI1A1] (M00592-1) Images



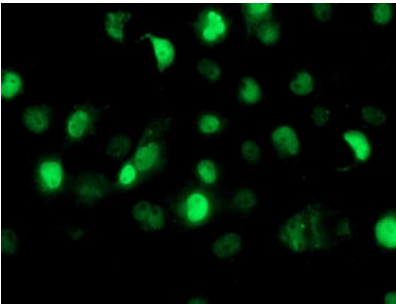
HEK293T cells transfected with either SAMHD1 (Myc-DDK-tagged) overexpress plasmid (Red) or empty vector control plasmid (Blue) were immunostained by anti-SAMHD1 antibody (M00592-1)



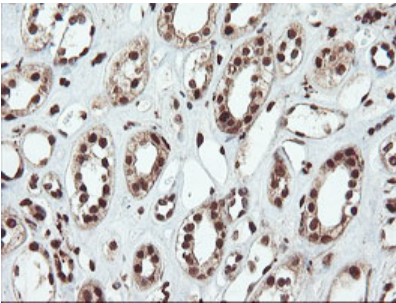
Flow cytometric Analysis of HeLa cells



Flow cytometric Analysis of Jurkat cells

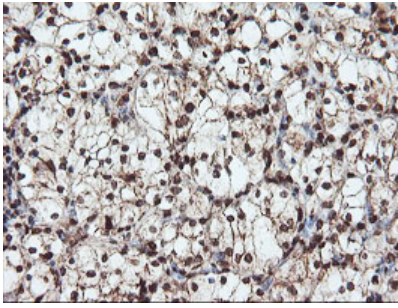


Anti-SAMHD1 mouse monoclonal antibody (M00592-1) immunofluorescent staining of COS7 cells transiently transfected by pCMV6-ENTRY SAMHD1.

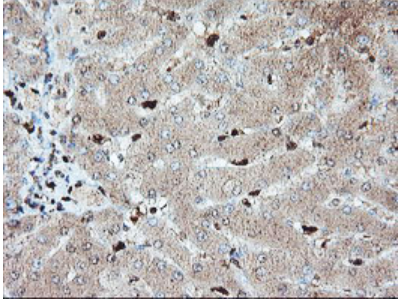


Immunohistochemical staining of paraffin-embedded Human Kidney tissue within the normal limits using anti-SAMHD1 mouse monoclonal antibody. (Heat-induced epitope retrieval by 10mM citric buffer)

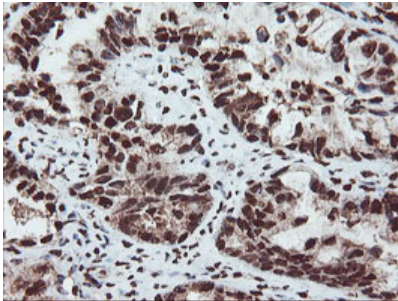
Immunohistochemical staining of paraffin-embedded Carcinoma of Human kidney tissue using anti-SAMHD1



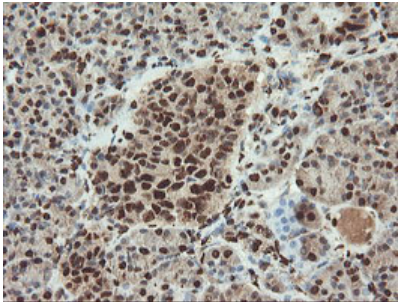
mouse monoclonal antibody. (Heat-induced epitope retrieval by 10mM citric buffer)



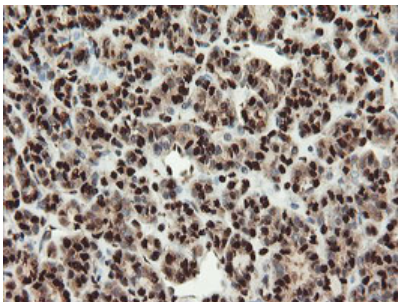
Immunohistochemical staining of paraffin-embedded Human liver tissue within the normal limits using anti-SAMHD1 mouse monoclonal antibody. (Heat-induced epitope retrieval by 10mM citric buffer)



Immunohistochemical staining of paraffin-embedded Adenocarcinoma of Human ovary tissue using anti-SAMHD1 mouse monoclonal antibody. (Heat-induced epitope retrieval by 10mM citric buffer)

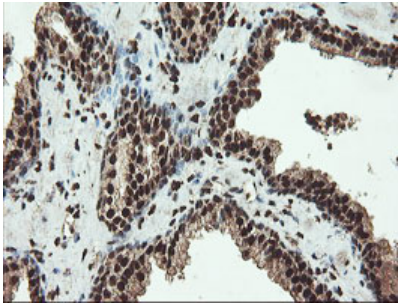


Immunohistochemical staining of paraffin-embedded Human pancreas tissue within the normal limits using anti-SAMHD1 mouse monoclonal antibody. (Heat-induced epitope retrieval by 10mM citric buffer)

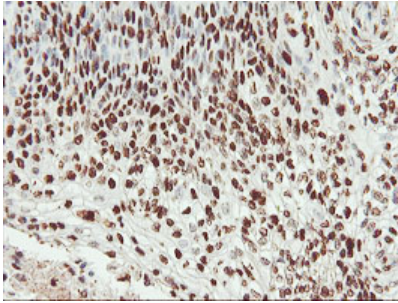


Immunohistochemical staining of paraffin-embedded Carcinoma of Human thyroid tissue using anti-SAMHD1 mouse monoclonal antibody. (Heat-induced epitope retrieval by 10mM citric buffer)

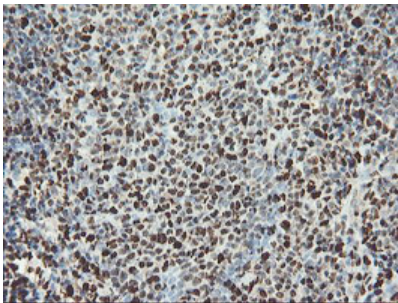
Immunohistochemical staining of paraffin-embedded Carcinoma of Human prostate tissue using anti-SAMHD1



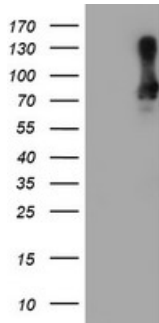
mouse monoclonal antibody. (Heat-induced epitope retrieval by 10mM citric buffer)



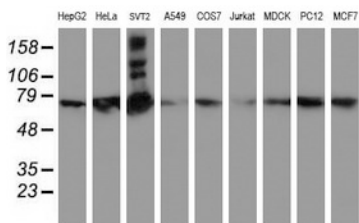
Immunohistochemical staining of paraffin-embedded Carcinoma of Human bladder tissue using anti-SAMHD1 mouse monoclonal antibody. (Heat-induced epitope retrieval by 10mM citric buffer)



Immunohistochemical staining of paraffin-embedded Human tonsil within the normal limits using anti-SAMHD1 mouse monoclonal antibody. (Heat-induced epitope retrieval by 10mM citric buffer)

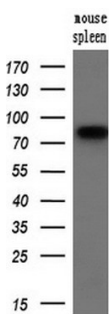


HEK293T cells were transfected with the pCMV6-ENTRY control (Left lane) or pCMV6-ENTRY SAMHD1 (Right lane) cDNA for 48 hrs and lysed. Equivalent amounts of cell lysates (5 ug per lane) were separated by SDS-PAGE and immunoblotted with anti-SAMHD1.



Western blot analysis of extracts (35ug) from 9 different cell lines by using anti-SAMHD1 monoclonal antibody (HepG2: human; HeLa: human; SVT2: mouse; A549: human; COS7: monkey; Jurkat: human; MDCK: canine; PC12: rat; MCF7: human).

Western blot analysis of extracts (10ug) from a mouse tissue by using anti-SAMHD1 monoclonal antibody (1:200).



## Submit a product review to Biocompare.com

Submit a review of this product to Biocompare.com to receive a \$20 Amazon.com giftcard! Your reviews help your fellow scientists make the right decisions. Thank you for your contribution.



Anti-SAMHD1 Mouse Monoclonal Antibody [Clone ID: OT11A1]

For Research Use Only. Not for use in diagnostic procedures.