

## Anti-Adrenomedullin (ADM) Mouse Monoclonal Antibody [Clone ID: OTI8A1]

Catalog Number: M00594

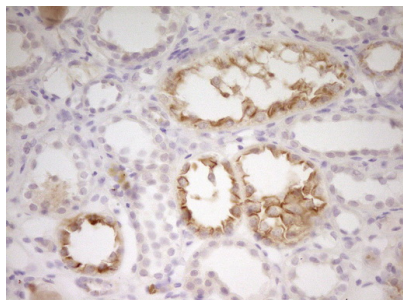
### Overview

Product Name	Anti-Adrenomedullin (ADM) Mouse Monoclonal Antibody [Clone ID: OTI8A1]
Reactive Species	Human
Description	Boster Bio ADM mouse monoclonal antibody, clone OTI8A1 (formerly 8A1). Catalog# M00594. Tested in IHC. This antibody reacts with Human.
Application	IHC
Clonality	Monoclonal OTI8A1
Formulation	PBS (pH 7.3) containing 1% stabilizing protein, 50% glycerol and 0.02% sodium azide. This antibody is supplied in a stabilized formulation. Compatibility with conjugation reactions depends on the chemistry of the conjugation method used. For conjugation methods that are not compatible with the stabilizing components present in this formulation, a carrier-free antibody format is required.
Storage Instructions	Store at -20°C as received.
Host	Mouse
Uniprot ID	P35318

### Technical Details

Immunogen	Human recombinant protein fragment corresponding to amino acids 22-146 of human ADM (NP_001115) produced in E.coli.
Isotype	IgG2b
Concentration	1 mg/ml
Purification	Purified from mouse ascites fluids or tissue culture supernatant by affinity chromatography (protein A/G)
Suggested Dilutions	IHC: 1:250

## Anti-Adrenomedullin (ADM) Mouse Monoclonal Antibody [Clone ID: OT18A1] (M00594) Images



Immunohistochemical staining of paraffin-embedded Human Kidney tissue within the normal limits using anti-ADM mouse monoclonal antibody. (Heat-induced epitope retrieval by 1 mM EDTA in 10mM Tris)

### Submit a product review to Biocompare.com

Submit a review of this product to Biocompare.com to receive a \$20 Amazon.com giftcard! Your reviews help your fellow scientists make the right decisions. Thank you for your contribution.



Anti-Adrenomedullin (ADM) Mouse Monoclonal Antibody [Clone ID: OT18A1]

For Research Use Only. Not for use in diagnostic procedures.