

Anti-Adrenomedullin (ADM) Mouse Monoclonal Antibody [Clone ID: OTI2A4]

Catalog Number: M00594-1

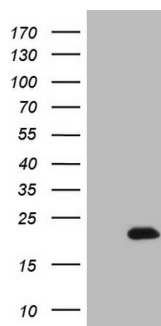
Overview

Product Name	Anti-Adrenomedullin (ADM) Mouse Monoclonal Antibody [Clone ID: OTI2A4]
Reactive Species	Human
Description	Boster Bio ADM mouse monoclonal antibody, clone OTI2A4 (formerly 2A4). Catalog# M00594-1. Tested in WB. This antibody reacts with Human.
Application	WB
Clonality	Monoclonal OTI2A4
Formulation	PBS (pH 7.3) containing 1% stabilizing protein, 50% glycerol and 0.02% sodium azide. This antibody is supplied in a stabilized formulation. Compatibility with conjugation reactions depends on the chemistry of the conjugation method used. For conjugation methods that are not compatible with the stabilizing components present in this formulation, a carrier-free antibody format is required.
Storage Instructions	Store at -20°C as received.
Host	Mouse
Uniprot ID	P35318

Technical Details

Immunogen	Human recombinant protein fragment corresponding to amino acids 22-146 of human ADM (NP_001115) produced in E.coli.
Isotype	IgG1
Concentration	1 mg/ml
Purification	Purified from mouse ascites fluids or tissue culture supernatant by affinity chromatography (protein A/G)
Suggested Dilutions	WB 1:2000

Anti-Adrenomedullin (ADM) Mouse Monoclonal Antibody [Clone ID: OT12A4] (M00594-1) Images



HEK293T cells were transfected with the pCMV6-ENTRY control (Left lane) or pCMV6-ENTRY ADM (Right lane) cDNA for 48 hrs and lysed. Equivalent amounts of cell lysates (5 ug per lane) were separated by SDS-PAGE and immunoblotted with anti-ADM.

Submit a product review to Biocompare.com

Submit a review of this product to Biocompare.com to receive a \$20 Amazon.com giftcard! Your reviews help your fellow scientists make the right decisions. Thank you for your contribution.



Anti-Adrenomedullin (ADM) Mouse Monoclonal Antibody [Clone ID: OT12A4]

For Research Use Only. Not for use in diagnostic procedures.