

## Anti-Ms CD26 Purified Dpp4 Monoclonal Antibody

Catalog Number: M00597-1

### Introduction

The clone MYG13 recognizes CD22 cell surface antigen, a 130-140kDa protein. The expression of CD22 is primarily restricted to the normal and neoplastic B cells but does not express on other hematopoietic cells. The initiation of expression of CD22 starts in the cytoplasm of pro-B and pre-B cells. Although CD22 is not expressed by plasma cells, it is abundantly expressed by the follicular mantle and marginal zone B-cells. Being a member of the immunoglobulin superfamily, CD22 serves as an adhesion receptor for sialic acid-bearing ligands expressed on erythrocytes and leukocytes. The role of CD22 in the activation of B-cells is primarily associated with tyrosine kinases mediated signal transduction pathways.

This antibody is routinely tested by flow cytometric analysis. Flow cytometry and other applications were tested during antibody development by CapricoBio or are reported in the literature.

### Application Information

Each lot of this antibody has been pre-titrated and tested by flow cytometric analysis of human PBMCs such that 5ul of this product is sufficient for staining of 1 million cells in a 100ul staining volume or 100ul of whole blood. It is recommended that antibody reactivity be empirically titrated for optimal performance in the application of interest.

### About DPP4

CD26, also known as dipeptidyl peptidase IV (DPP-IV), is a homodimeric cell surface serine peptidase that degrades IFN-gamma-induced cytokines, acts as a T cell costimulatory molecule, and participates in multiple immunopathological roles in leukocyte homing and inflammation. Alterations in its peptidase activity are characteristic of malignant transformation. The enzymatic activity increases dramatically with tumour grade and severity. CD26 is expressed in various blood cell types, but also e.g. in cells that are histogenetically related to activated fibroblasts. Alterations in CD26 density have been reported on circulating monocytes and CD4+ T cells during rheumatoid arthritis and systemic lupus erythematosus.

### Overview

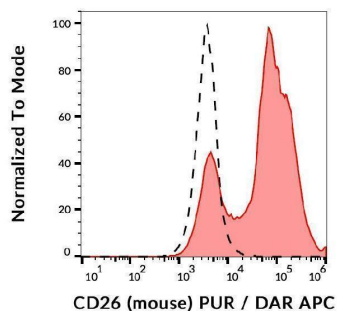
Product Name	Anti-Ms CD26 Purified Dpp4 Monoclonal Antibody
Reactive Species	Mouse
Description	Boster Bio Anti-Ms CD26 Purified Dpp4 Monoclonal Antibody (Catalog# M00597-1). Tested in IP, Flow Cytometry, IHC-F application(s). This antibody reacts with Mouse.
Conjugate	APC
Application	Flow Cytometry, IP, IHC-F
Clonality	Monoclonal H194-112
Formulation	Phosphate buffered saline (PBS), pH 7.4, 15 mM sodium azide
Storage Instructions	Store at 2-8°C. Do not freeze.
Host	Rat

Uniprot ID	P28843
------------	--------

## Technical Details

Immunogen	BALB/c thymocytes. The rat monoclonal antibody H194-112 recognizes an extracellular epitope of CD26, a 110 kDa type II membrane glycoprotein, which is a peptidase expressed on mature thymocytes, T cells (especially activated), B cells, NK cells and macrophages.
Predicted Reactive Species	Bovine
Isotype	Rat IgG2a kappa
Form	Liquid
Concentration	1 mg/ml
Purification	Purified by protein-G affinity chromatography.
Suggested Dilutions	Flow cytometry: 1-4 ug/ml.

## Anti-Ms CD26 Purified Dpp4 Monoclonal Antibody (M00597-1) Images



Separation of murine splenocytes stained using anti-mouse CD26 (H194-112) purified antibody (concentration in sample 4  $\mu\text{g}/\text{ml}$ , DAR APC, red-filled) from murine splenocytes unstained by primary antibody (DAR APC, black-dashed) in flow cytometry analysis (surface staining).

### Submit a product review to Biocompare.com

Submit a review of this product to Biocompare.com to receive a \$20 Amazon.com giftcard! Your reviews help your fellow scientists make the right decisions. Thank you for your contribution.



Anti-Ms CD26 Purified Dpp4 Monoclonal Antibody

For Research Use Only. Not for use in diagnostic procedures.