

## Anti-CD26 (DPP4) Mouse Monoclonal Antibody [Clone ID: OTI11D7]

Catalog Number: M00597-2

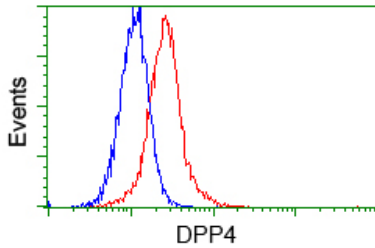
### Overview

Product Name	Anti-CD26 (DPP4) Mouse Monoclonal Antibody [Clone ID: OTI11D7]
Reactive Species	Human
Description	Boster Bio Anti-DPP4 (CD26) mouse monoclonal antibody, clone OTI11D7 (formerly 11D7). Catalog# M00597-2. Tested in FC, IF, IHC, WB. This antibody reacts with Human.
Conjugate	Unconjugated
Application	Flow Cytometry, IF, IHC, WB
Clonality	Monoclonal OTI11D7
Formulation	PBS (pH 7.3) containing 1% stabilizing protein, 50% glycerol and 0.02% sodium azide. This antibody is supplied in a stabilized formulation. Compatibility with conjugation reactions depends on the chemistry of the conjugation method used. For conjugation methods that are not compatible with the stabilizing components present in this formulation, a carrier-free antibody format is required.
Storage Instructions	Store at -20°C for one year. For short term storage and frequent use, store at 4°C for up to one month. Avoid repeated freeze-thaw cycles.
Host	Mouse
Uniprot ID	P27487

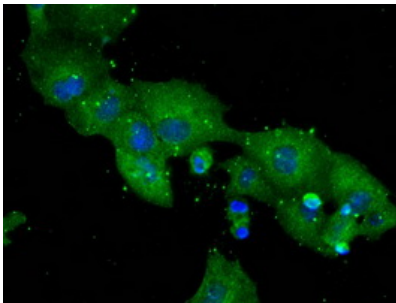
### Technical Details

Immunogen	Full length human recombinant protein of human DPP4 (NP_001926) produced in HEK293T cell.
Isotype	IgG1
Concentration	1 mg/ml
Purification	Purified from mouse ascites fluids or tissue culture supernatant by affinity chromatography (protein A/G)
Suggested Dilutions	WB 1:500 IHC 1:50 IF 1:100 Flow Cytometry 1:100

## Anti-CD26 (DPP4) Mouse Monoclonal Antibody [Clone ID: OTI11D7] (M00597-2) Images



Flow cytometric analysis of HeLa cells



Anti-DPP4 mouse monoclonal antibody (M00597-2) immunofluorescent staining of COS7 cells transiently transfected by pCMV6-ENTRY DPP4.

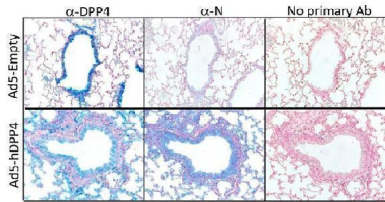
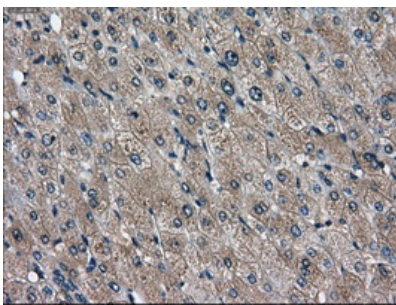
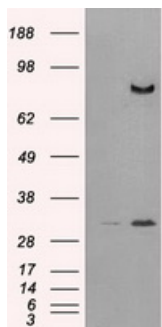


Figure from citation: Immunohistochemistry of DPP4 protein level by using anti-DPP4 antibody in lungs harvested from BALB/c mice at day 3. Dilution: 1:800



Immunohistochemical staining of paraffin-embedded liver tissue within the normal limits using anti-DPP4 mouse monoclonal antibody. (Heat-induced epitope retrieval by 10mM citric buffer)



HEK293T cells were transfected with the pCMV6-ENTRY control (Left lane) or pCMV6-ENTRY DPP4 (Right lane) cDNA for 48 hrs and lysed. Equivalent amounts of cell lysates (5 ug per lane) were separated by SDS-PAGE and immunoblotted with anti-DPP4.

Figure from citation: Western blot analysis of protein levels of DPP4/8/9 in 293E cells transfected with pcDNA3.1 (Mock)

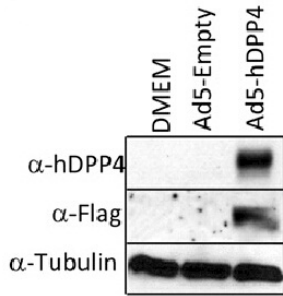
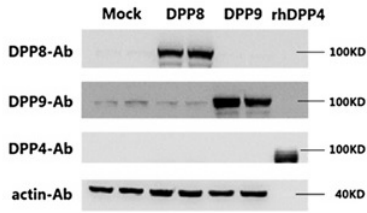


Figure from citation: Western Blot of DPP4 protein level by using anti-DPP4 antibody in mouse MLE15 cells.

## Submit a product review to Biocompare.com

Submit a review of this product to Biocompare.com to receive a \$20 Amazon.com giftcard! Your reviews help your fellow scientists make the right decisions. Thank you for your contribution.



Anti-CD26 (DPP4) Mouse Monoclonal Antibody [Clone ID: OTI11D7]

For Research Use Only. Not for use in diagnostic procedures.