

Anti-Cytochrome P450 1A2 (CYP1A2) Mouse Monoclonal Antibody [Clone ID: OTI6E2]

Catalog Number: M00598-1

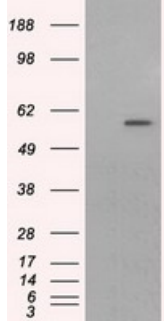
Overview

Product Name	Anti-Cytochrome P450 1A2 (CYP1A2) Mouse Monoclonal Antibody [Clone ID: OTI6E2]
Reactive Species	Human
Description	Boster Bio Anti-CYP1A2 (Cytochrome P450 1A2) mouse monoclonal antibody, clone OTI6E2 (formerly 6E2). Catalog# M00598-1. Tested in FC, IF, IHC, WB. This antibody reacts with Human.
Application	Flow Cytometry, IF, IHC, WB
Clonality	Monoclonal OTI6E2
Formulation	PBS (pH 7.3) containing 1% stabilizing protein, 50% glycerol and 0.02% sodium azide. This antibody is supplied in a stabilized formulation. Compatibility with conjugation reactions depends on the chemistry of the conjugation method used. For conjugation methods that are not compatible with the stabilizing components present in this formulation, a carrier-free antibody format is required.
Storage Instructions	Store at -20°C as received.
Host	Mouse
Uniprot ID	P05177

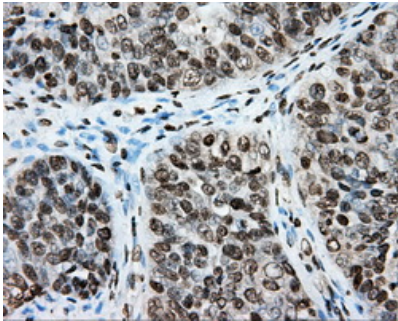
Technical Details

Immunogen	Full length human recombinant protein of human CYP1A2 (NP_000752) produced in HEK293T cell.
Isotype	IgG2a
Concentration	0.8 mg/ml
Purification	Purified from mouse ascites fluids or tissue culture supernatant by affinity chromatography (protein A/G)
Suggested Dilutions	WB 1:2000 IHC 1:50 IF 1:100 Flow Cytometry 1:100

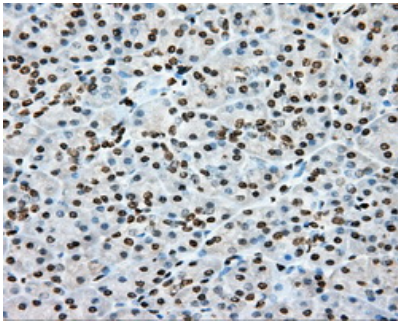
Anti-Cytochrome P450 1A2 (CYP1A2) Mouse Monoclonal Antibody [Clone ID: OTI6E2] (M00598-1) Images



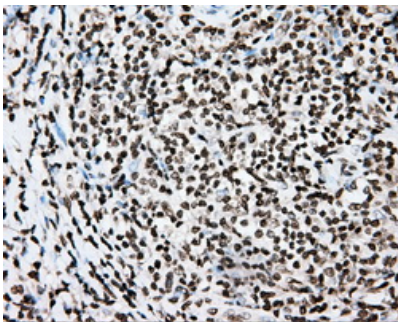
HEK293T cells were transfected with the pCMV6-ENTRY control (Left lane) or pCMV6-ENTRY CYP1A2 (Right lane) cDNA for 48 hrs and lysed. Equivalent amounts of cell lysates (5 ug per lane) were separated by SDS-PAGE and immunoblotted with anti-CYP1A2.



Immunohistochemical staining of paraffin-embedded Adenocarcinoma of ovary tissue using anti-CYP1A2 mouse monoclonal antibody. (Heat-induced epitope retrieval by 10mM citric buffer)

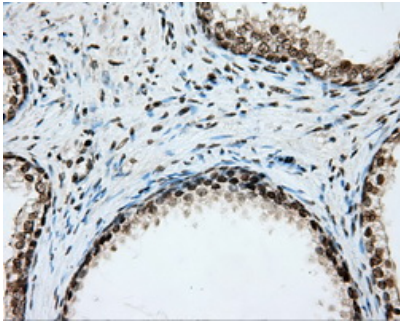


Immunohistochemical staining of paraffin-embedded pancreas tissue within the normal limits using anti-CYP1A2 mouse monoclonal antibody. (Heat-induced epitope retrieval by 10mM citric buffer)

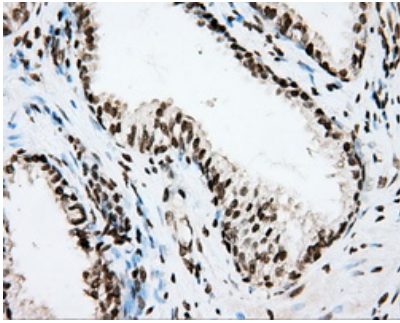


Immunohistochemical staining of paraffin-embedded Carcinoma of thyroid tissue using anti-CYP1A2 mouse monoclonal antibody. (Heat-induced epitope retrieval by 10mM citric buffer)

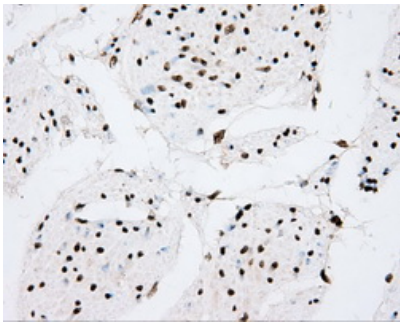
Immunohistochemical staining of paraffin-embedded prostate tissue within the normal limits using anti-CYP1A2 mouse monoclonal antibody. (Heat-induced epitope retrieval by 10mM citric buffer)



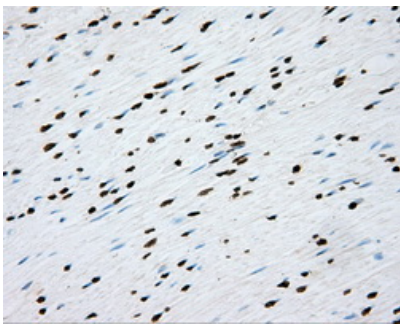
Immunohistochemical staining of paraffin-embedded Carcinoma of prostate tissue using anti-CYP1A2 mouse monoclonal antibody. (Heat-induced epitope retrieval by 10mM citric buffer)



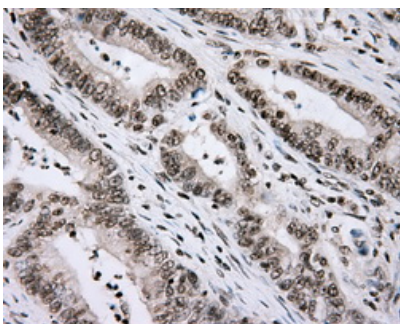
Immunohistochemical staining of paraffin-embedded bladder tissue within the normal limits using anti-CYP1A2 mouse monoclonal antibody. (Heat-induced epitope retrieval by 10mM citric buffer)

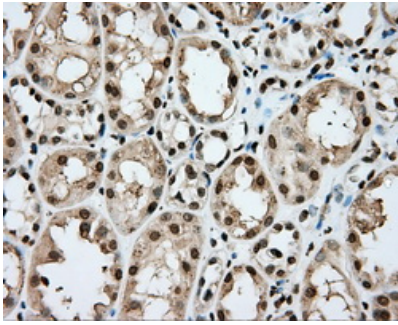


Immunohistochemical staining of paraffin-embedded colon tissue within the normal limits using anti-CYP1A2 mouse monoclonal antibody. (Heat-induced epitope retrieval by 10mM citric buffer)

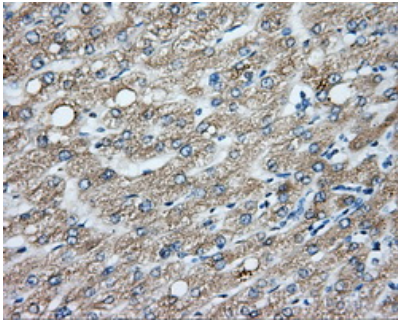


Immunohistochemical staining of paraffin-embedded Adenocarcinoma of colon tissue using anti-CYP1A2 mouse monoclonal antibody. (Heat-induced epitope retrieval by 10mM citric buffer)

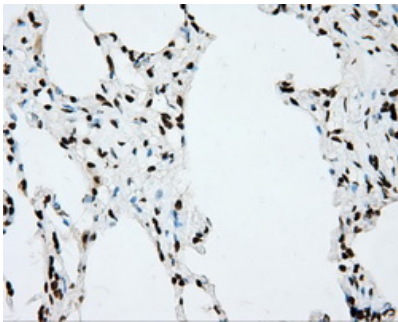




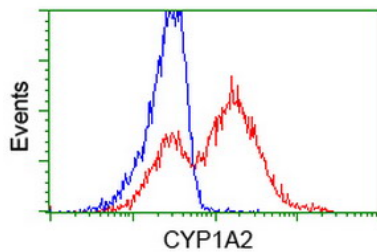
Immunohistochemical staining of paraffin-embedded Kidney tissue within the normal limits using anti-CYP1A2 mouse monoclonal antibody. (Heat-induced epitope retrieval by 10mM citric buffer)



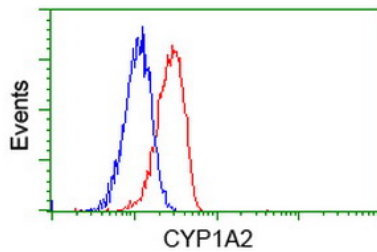
Immunohistochemical staining of paraffin-embedded liver tissue within the normal limits using anti-CYP1A2 mouse monoclonal antibody. (Heat-induced epitope retrieval by 10mM citric buffer)



Immunohistochemical staining of paraffin-embedded lung tissue within the normal limits using anti-CYP1A2 mouse monoclonal antibody. (Heat-induced epitope retrieval by 10mM citric buffer)

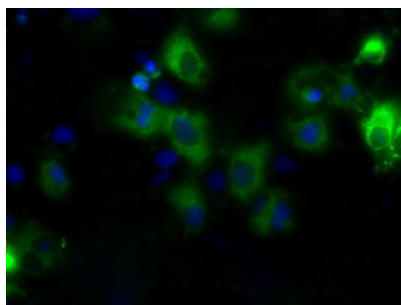


HEK293T cells transfected with either CYP1A2 (Myc-DDK-tagged) overexpress plasmid (Red) or empty vector control plasmid (Blue) were immunostained by anti-CYP1A2 antibody (M00598-1)



Flow cytometric Analysis of Jurkat cells

Anti-CYP1A2 mouse monoclonal antibody (M00598-1) immunofluorescent staining of COS7 cells transiently transfected by pCMV6-ENTRY CYP1A2.



Submit a product review to Biocompare.com

Submit a review of this product to Biocompare.com to receive a \$20 Amazon.com giftcard! Your reviews help your fellow scientists make the right decisions. Thank you for your contribution.



Anti-Cytochrome P450 1A2 (CYP1A2) Mouse Monoclonal Antibody [Clone ID: OTI6E2]

For Research Use Only. Not for use in diagnostic procedures.