

## Anti-Prolactin (PRL) Mouse Monoclonal Antibody [Clone ID: OTI6B1]

Catalog Number: M00601-1

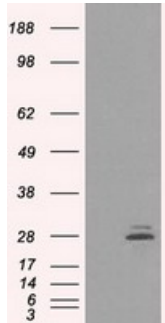
### Overview

Product Name	Anti-Prolactin (PRL) Mouse Monoclonal Antibody [Clone ID: OTI6B1]
Reactive Species	Human
Description	Boster Bio PRL (Prolactin) mouse monoclonal antibody, clone OTI6B1 (formerly 6B1). Catalog# M00601-1. Tested in FC, IF, IHC, WB. This antibody reacts with Human.
Application	Flow Cytometry, IF, IHC, WB
Clonality	Monoclonal OTI6B1
Formulation	PBS (pH 7.3) containing 1% BSA, 50% glycerol and 0.02% sodium azide.
Storage Instructions	Store at -20°C as received.
Host	Mouse
Uniprot ID	P01236

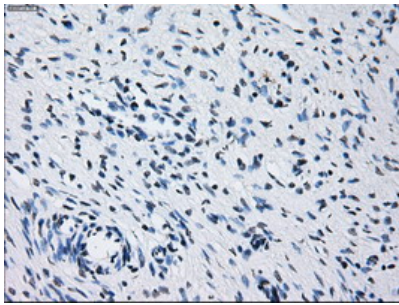
### Technical Details

Immunogen	Full length human recombinant protein of human PRL (NP_000939) produced in HEK293T cell.
Isotype	IgG2a
Concentration	1 mg/ml
Purification	Purified from mouse ascites fluids or tissue culture supernatant by affinity chromatography (protein A/G)
Suggested Dilutions	Dilute the sample so that the expected range of concentrations fall within the detection range of this kit. If the expected range of concentration is unknown, a pilot test should be conducted to decide the optimal dilution ratio for your samples. Some PubMed article(s) citing the expression level of this target are as follows:

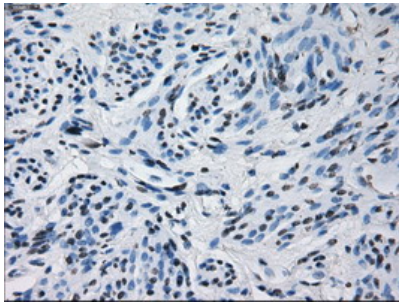
## Anti-Prolactin (PRL) Mouse Monoclonal Antibody [Clone ID: OTI6B1] (M00601-1) Images



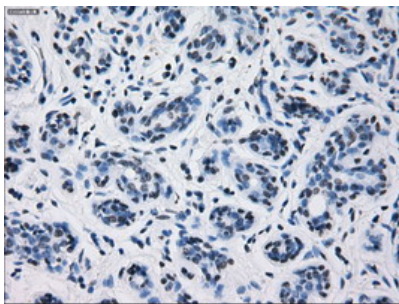
HEK293T cells were transfected with the pCMV6-ENTRY control (Left lane) or pCMV6-ENTRY PRL (Right lane) cDNA for 48 hrs and lysed. Equivalent amounts of cell lysates (5 ug per lane) were separated by SDS-PAGE and immunoblotted with anti-PRL.



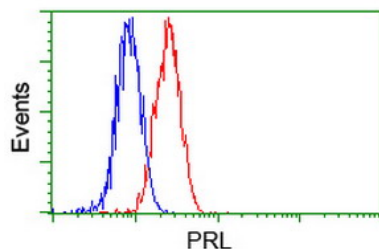
Immunohistochemical staining of paraffin-embedded Human Ovary tissue within the normal limits using anti-PRL mouse monoclonal antibody. (Heat-induced epitope retrieval by 10mM citric buffer)



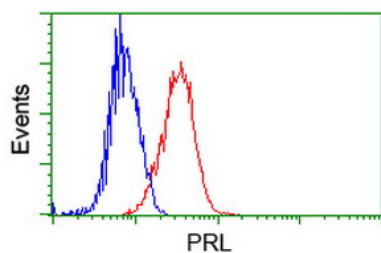
Immunohistochemical staining of paraffin-embedded Human endometrium tissue within the normal limits using anti-PRL mouse monoclonal antibody. (Heat-induced epitope retrieval by 10mM citric buffer)



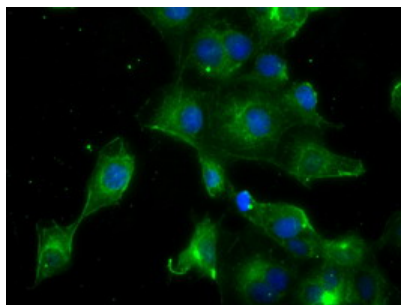
Immunohistochemical staining of paraffin-embedded Human breast tissue within the normal limits using anti-PRL mouse monoclonal antibody. (Heat-induced epitope retrieval by 10mM citric buffer)



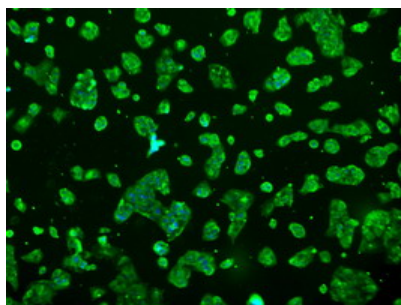
Flow cytometric Analysis of HeLa cells



Flow cytometric Analysis of Jurkat cells



Anti-PRL mouse monoclonal antibody (M00601-1)  
immunofluorescent staining of COS7 cells transiently  
transfected by pCMV6-ENTRY PRL.



Immunofluorescent staining of HepG2 cells using anti-PRL  
mouse monoclonal antibody (M00601-1).

## Submit a product review to Biocompare.com

Submit a review of this product to Biocompare.com to receive a \$20 Amazon.com giftcard! Your reviews help your fellow scientists make the right decisions. Thank you for your contribution.



Anti-Prolactin (PRL) Mouse Monoclonal Antibody [Clone ID: OTI6B1]