

## Anti-Prolactin Rabbit Monoclonal Antibody

Catalog Number: M00601-2

### About PRL

Dynamin-related GTPase required for mitochondrial fusion and regulation of apoptosis. May form a diffusion barrier for proteins stored in mitochondrial cristae. Proteolytic processing in response to intrinsic apoptotic signals may lead to disassembly of OPA1 oligomers and release of the caspase activator cytochrome C (CYCS) into the mitochondrial intermembrane space.

### Overview

|                      |  |
|----------------------|--|
| Product Name         | Anti-Prolactin Rabbit Monoclonal Antibody  |
| Reactive Species     | Human  |
| Description          | Boster Bio Anti-Prolactin Rabbit Monoclonal Antibody catalog # M00601-2. Tested in WB application. This antibody reacts with Human.        |
| Conjugate            | FITC   |
| Application          | WB   |
| Clonality            | Monoclonal 19P46   |
| Formulation          | Rabbit IgG in phosphate buffered saline, pH 7.4, 150mM NaCl, 0.02% sodium azide and 50% glycerol, 0.4-0.5mg/ml BSA.                        |
| Storage Instructions | Store at -20°C for one year. For short term storage and frequent use, store at 4°C for up to one month. Avoid repeated freeze-thaw cycles. |
| Host                 | Rabbit   |
| Uniprot ID           | P01236   |

### Technical Details

|                            |  |
|----------------------------|--|
| Immunogen                  | A synthesized peptide derived from human Prolactin   |
| Predicted Reactive Species | Human, Primate   |
| Cross Reactivity           | Detects ~20kDa. Does not cross-react with alphaB-crystallin, betaL-crystallin, ̢H- crystallin, gamma-crystallin, HSP25, HSP27 or HSP47 proteins. |
| Isotype                    | IgG  |
| Form                       | Liquid   |
| Concentration              | Actual concentration vary by lot. Use suggested dilution ratio to decide dilution procedure.   |
| Purification               | Affinity-chromatography  |

**Suggested Dilutions**

Dilute the sample so that the expected range of concentrations fall within the detection range of this kit.

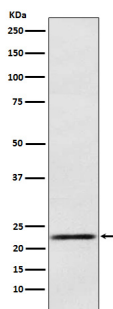
If the expected range of concentration is unknown, a pilot test should be conducted to decide the optimal dilution ratio for your samples.

Some PubMed article(s) citing the expression level of this target are as follows:

Boster Bio's internal QC testing used:

WB 1:500-1:2000

## Anti-Prolactin Rabbit Monoclonal Antibody (M00601-2) Images



Western blot analysis of Prolactin expression in Human fetal pituitary lysate.

### Submit a product review to Biocompare.com

Submit a review of this product to Biocompare.com to receive a \$20 Amazon.com giftcard! Your reviews help your fellow scientists make the right decisions. Thank you for your contribution.



Anti-Prolactin Rabbit Monoclonal Antibody