

## Anti-CD68/Sr D1 Rabbit Monoclonal Antibody

Catalog Number: M00602-1

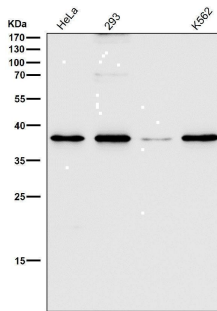
### Overview

Product Name	Anti-CD68/Sr D1 Rabbit Monoclonal Antibody
Reactive Species	Human, Mouse, Rat
Description	Boster Bio Anti-CD68/Sr D1 Rabbit Monoclonal Antibody catalog # M00602-1. Tested in WB application. This antibody reacts with Human, Mouse, Rat.
Application	WB
Clonality	Monoclonal GBE-3
Formulation	Rabbit IgG in stabilizing components, phosphate buffered saline, pH 7.4, 150mM NaCl, 0.02% sodium azide and 50% glycerol. *This antibody is supplied in a stabilized formulation. Compatibility with conjugation reactions depends on the chemistry of the conjugation method used. For conjugation methods that are not compatible with the stabilizing components present in this formulation, a carrier-free antibody format is required.
Storage Instructions	Store at -20°C for one year. For short term storage and frequent use, store at 4°C for up to one month. Avoid repeated freeze-thaw cycles.
Host	Rabbit
Uniprot ID	P34810

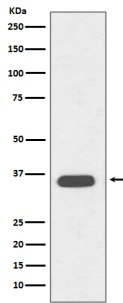
### Technical Details

Immunogen	A synthesized peptide derived from human CD68
Isotype	Rabbit IgG
Form	Liquid
Concentration	0.5mg/ml
Purification	Affinity-chromatography
Suggested Dilutions	WB 1:500-2000

## Anti-CD68/Sr D1 Rabbit Monoclonal Antibody (M00602-1) Images



All lanes use the Antibody at 1:2K dilution for 1 hour at room temperature.



Western blot analysis of CD68 expression in Jurkat cell lysate.

## 18 Publications Citing This Product

1. PubMed ID: -, Fan Guo,Wei na Kong,Gang Zhao et al.The Correlation Between Tumor-associated Macrophage Infiltration and Progression in Cervical Carcinoma, 01 December 2020, PREPRINT (Version 1) available at Research Square[+https://doi.org/10.21203/rs.3.rs-115339/v1+]
2. PubMed ID: 27554340, Blockage of Galectin-receptor Interactions by  $\beta$ -lactose Exacerbates Plasmodium berghei-induced Pulmonary Immunopathology
3. PubMed ID: 25906757, 1,25(OH)2D3 downregulates the Toll-like receptor 4-mediated inflammatory pathway and ameliorates liver injury in diabetic rats

Visit [bosterbio.com/anti-cd68-rabbit-monoclonal-antibody-m00602-1-boster.html](https://www.bosterbio.com/anti-cd68-rabbit-monoclonal-antibody-m00602-1-boster.html) to see all 18 publications.

## Submit a product review to Biocompare.com

Submit a review of this product to Biocompare.com to receive a \$20 Amazon.com giftcard! Your reviews help your fellow scientists make the right decisions. Thank you for your contribution.



Anti-CD68/Sr D1 Rabbit Monoclonal Antibody

For Research Use Only. Not for use in diagnostic procedures.