

## Anti-LEF1 Antibody

Catalog Number: M00605-1

### About LEF1

Participates in the Wnt signaling pathway. Activates transcription of target genes in the presence of CTNNB1 and EP300. May play a role in hair cell differentiation and follicle morphogenesis. TLE1, TLE2, TLE3 and TLE4 repress transactivation mediated by LEF1 and CTNNB1. Regulates T-cell receptor alpha enhancer function. Binds DNA in a sequence-specific manner. PIAG antagonizes both Wnt-dependent and Wnt-independent activation by LEF1 (By similarity). Isoform 3 lacks the CTNNB1 interaction domain and may be an antagonist for Wnt signaling. Isoform 5 transcriptionally activates the fibronectin promoter, binds to and represses transcription from the E-cadherin promoter in a CTNNB1- independent manner, and is involved in reducing cellular aggregation and increasing cell migration of pancreatic cancer cells. Isoform 1 transcriptionally activates MYC and CCND1 expression and enhances proliferation of pancreatic tumor cells.

### Overview

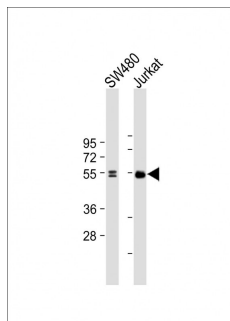
Product Name	Anti-LEF1 Antibody
Reactive Species	Human
Description	Boster Bio Anti-LEF1 Antibody (Catalog # M00605-1). Tested in WB application(s). This antibody reacts with Human.
Application	WB
Clonality	Monoclonal 1866CT561.78.3
Formulation	Purified monoclonal antibody supplied in PBS with 0.09% (W/V) sodium azide.
Storage Instructions	Maintain refrigerated at 2-8°C for up to 2 weeks. For long-term storage, store at -20°C in small aliquots to prevent freeze-thaw cycles.
Host	Mouse
Uniprot ID	Q9UJU2

### Technical Details

Immunogen	This antibody is generated from a mouse immunized with a recombinant protein between 95-283 amino acids from human.
Predicted Reactive Species	Mouse
Isotype	IgG1,kappa
Purification	This antibody is purified through a protein G column, followed by dialysis against PBS.
Suggested Dilutions	WB: 1:4000



## Anti-LEF1 Antibody (M00605-1) Images



All lanes : Anti-LEF1 at dilution  
Lane 1: SW480 whole cell lysate  
Lane 2: Jurkat whole cell lysate  
Lysates/proteins at 20  $\mu$ g per lane. Secondary Goat Anti-mouse IgG, (H+L), Peroxidase conjugated at 1/10000 dilution. Predicted band size : 44kDa  
Blocking/Dilution buffer: 5% NFDM/TBST.

## Submit a product review to Biocompare.com

Submit a review of this product to Biocompare.com to receive a \$20 Amazon.com giftcard! Your reviews help your fellow scientists make the right decisions. Thank you for your contribution.



### Anti-LEF1 Antibody

For Research Use Only. Not for use in diagnostic procedures.