

Anti-PTP1B (PTPN1) Mouse Monoclonal Antibody [Clone ID: OTI1D10]

Catalog Number: M00613-1

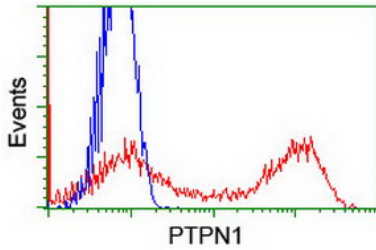
Overview

Product Name	Anti-PTP1B (PTPN1) Mouse Monoclonal Antibody [Clone ID: OTI1D10]
Reactive Species	Dog, Human, Monkey, Rat
Description	Boster Bio PTPN1 (PTP1B) mouse monoclonal antibody, clone OTI1D10 (formerly 1D10). Catalog# M00613-1. Tested in FC, IF, IHC, WB. This antibody reacts with Human, Monkey, Rat, Dog.
Conjugate	Unconjugated
Application	Flow Cytometry, IF, IHC, WB
Clonality	Monoclonal OTI1D10
Formulation	PBS (PH 7.3) containing 1% BSA, 50% glycerol and 0.02% sodium azide.
Storage Instructions	Store at -20°C for one year. For short term storage and frequent use, store at 4°C for up to one month. Avoid repeated freeze-thaw cycles.
Host	Mouse
Uniprot ID	P18031

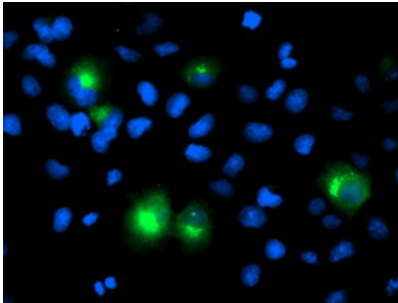
Technical Details

Immunogen	Full length human recombinant protein of human PTPN1 (NP_002818) produced in HEK293 cell.
Isotype	IgG2a
Concentration	1 mg/ml
Purification	Purified from mouse ascites fluids or tissue culture supernatant by affinity chromatography (protein A/G)
Suggested Dilutions	Dilute the sample so that the expected range of concentrations fall within the detection range of this kit. If the expected range of concentration is unknown, a pilot test should be conducted to decide the optimal dilution ratio for your samples. Some PubMed article(s) citing the expression level of this target are as follows:

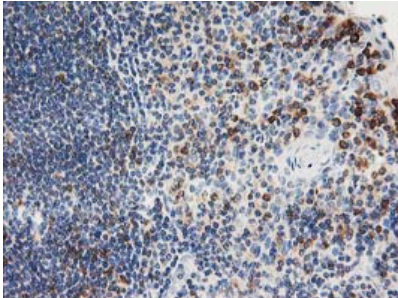
Anti-PTP1B (PTPN1) Mouse Monoclonal Antibody [Clone ID: OTI1D10] (M00613-1) Images



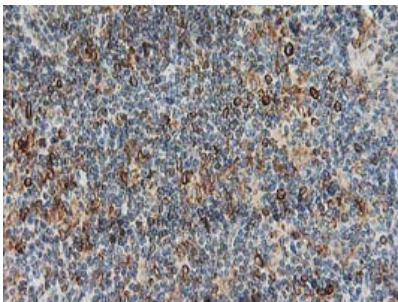
HEK293T cells transfected with either PTPN1 (Myc-DDK-tagged) overexpress plasmid (Red) or empty vector control plasmid (Blue) were immunostained by anti-PTPN1 antibody (M00613-1)



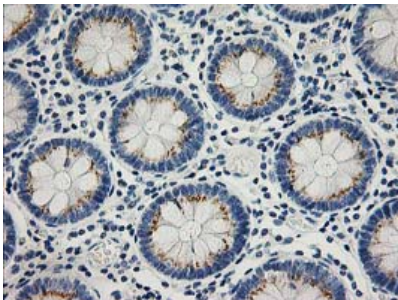
Anti-PTPN1 mouse monoclonal antibody (M00613-1) immunofluorescent staining of COS7 cells transiently transfected by pCMV6-ENTRY PTPN1.



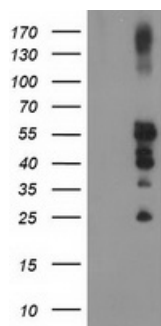
Immunohistochemical staining of paraffin-embedded Human lymph node tissue within the normal limits using anti-PTPN1 mouse monoclonal antibody. (Heat-induced epitope retrieval by 10mM citric buffer



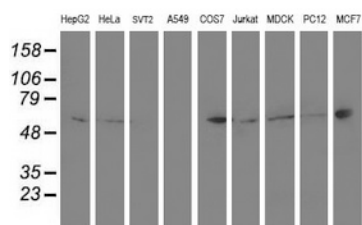
Immunohistochemical staining of paraffin-embedded Human lymphoma tissue using anti-PTPN1 mouse monoclonal antibody. (Heat-induced epitope retrieval by 10mM citric buffer



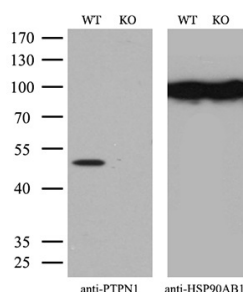
Immunohistochemical staining of paraffin-embedded Human colon tissue within the normal limits using anti-PTPN1 mouse monoclonal antibody. (Heat-induced epitope retrieval by 10mM citric buffer



HEK293T cells were transfected with the pCMV6-ENTRY control (Left lane) or pCMV6-ENTRY PTPN1 (Right lane) cDNA for 48 hrs and lysed. Equivalent amounts of cell lysates (5 ug per lane) were separated by SDS-PAGE and immunoblotted with anti-PTPN1.



Western blot analysis of extracts (35ug) from 9 different cell lines by using anti-PTPN1 monoclonal antibody.



Equivalent amounts of cell lysates (10 ug per lane) of wild-type HeLa cells (WT) and PTPN1-Knockout HeLa cells (KO) were separated by SDS-PAGE and immunoblotted with anti-PTPN1 monoclonal antibody M00613-1. Then the blotted membrane was stripped and reprobed with anti-HSP90AB1 antibody as a loading control (1:500).

Submit a product review to Biocompare.com

Submit a review of this product to Biocompare.com to receive a \$20 Amazon.com giftcard! Your reviews help your fellow scientists make the right decisions. Thank you for your contribution.



Anti-PTP1B (PTPN1) Mouse Monoclonal Antibody [Clone ID: OT1D10]