

Anti-APE1 (APEX1) Mouse Monoclonal Antibody [Clone ID: OTI4D9]

Catalog Number: M00627-1

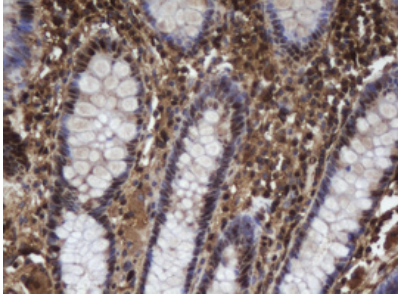
Overview

| | |
|----------------------|--|
| Product Name | Anti-APE1 (APEX1) Mouse Monoclonal Antibody [Clone ID: OTI4D9] |
| Reactive Species | Dog, Human, Monkey, Mouse, Rat |
| Description | Boster Bio APEX1 mouse monoclonal antibody, clone OTI4D9 (formerly 4D9). Catalog# M00627-1. Tested in IHC, WB. This antibody reacts with Human, Monkey, Mouse, Rat, Dog. |
| Conjugate | Unconjugated |
| Application | IHC, WB |
| Clonality | Monoclonal OTI4D9 |
| Formulation | PBS (pH 7.3) containing 1% stabilizing protein, 50% glycerol and 0.02% sodium azide. This antibody is supplied in a stabilized formulation. Compatibility with conjugation reactions depends on the chemistry of the conjugation method used. For conjugation methods that are not compatible with the stabilizing components present in this formulation, a carrier-free antibody format is required. |
| Storage Instructions | Store at -20°C for one year. For short term storage and frequent use, store at 4°C for up to one month. Avoid repeated freeze-thaw cycles. |
| Host | Mouse |
| Uniprot ID | P27695 |

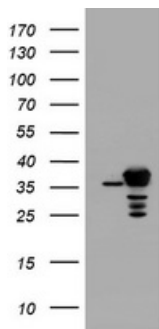
Technical Details

| | |
|---------------------|--|
| Immunogen | Human recombinant protein fragment corresponding to amino acids 1-242 of human APEX1 (NP_001632) produced in E.coli. |
| Isotype | IgG2b |
| Concentration | 1 mg/ml |
| Purification | Purified from mouse ascites fluids or tissue culture supernatant by affinity chromatography (protein A/G) |
| Suggested Dilutions | WB 1:2000 IHC 1:150 |

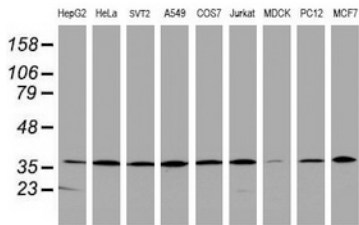
Anti-APE1 (APEX1) Mouse Monoclonal Antibody [Clone ID: OTI4D9] (M00627-1) Images



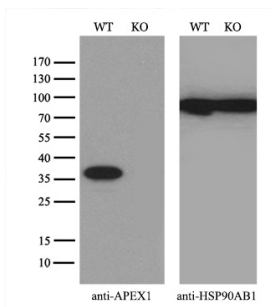
Immunohistochemical staining of paraffin-embedded Human colon tissue within the normal limits using anti-APEX1 mouse monoclonal antibody. (Heat-induced epitope retrieval by 10mM citric buffer)



HEK293T cells were transfected with the pCMV6-ENTRY control (Left lane) or pCMV6-ENTRY APEX1 (Right lane) cDNA for 48 hrs and lysed. Equivalent amounts of cell lysates (5 ug per lane) were separated by SDS-PAGE and immunoblotted with anti-APEX1.



Western blot analysis of extracts (35ug) from 9 different cell lines by using anti-APEX1 monoclonal antibody (HepG2: human; HeLa: human; SVT2: mouse; A549: human; COS7: monkey; Jurkat: human; MDCK: canine; PC12: rat; MCF7: human).



Equivalent amounts of cell lysates (10 ug per lane) of wild-type 293T cells (WT) and APEX1-Knockout 293T cells (KO) were separated by SDS-PAGE and immunoblotted with anti-APEX1 monoclonal antibody M00627-1

Submit a product review to [Biocompare.com](https://www.biocompare.com)

Submit a review of this product to [Biocompare.com](https://www.biocompare.com) to receive a \$20 Amazon.com giftcard! Your reviews help your fellow scientists make the right decisions. Thank you for your contribution.



Anti-APE1 (APEX1) Mouse Monoclonal Antibody [Clone ID: OTI4D9]

For Research Use Only. Not for use in diagnostic procedures.