

## Anti-Sumo 1 Rabbit Monoclonal Antibody

Catalog Number: M00631-1

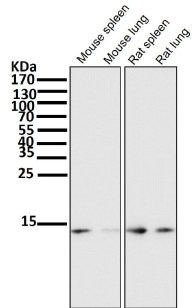
### Overview

|                      |  |
|----------------------|--|
| Product Name         | Anti-Sumo 1 Rabbit Monoclonal Antibody   |
| Reactive Species     | Human, Mouse, Rat  |
| Description          | Boster Bio Anti-Sumo 1 Rabbit Monoclonal Antibody catalog # M00631-1. Tested in WB, IHC, ICC/IF, IP, Flow Cytometry applications. This antibody reacts with Human, Mouse, Rat. |
| Application          | Flow Cytometry, IP, IF, IHC, ICC, WB   |
| Clonality            | Monoclonal BFI-19  |
| Formulation          | Rabbit IgG in phosphate buffered saline, pH 7.4, 150mM NaCl, 0.02% sodium azide and 50% glycerol, 0.4-0.5mg/ml BSA.  |
| Storage Instructions | Store at -20°C for one year. For short term storage and frequent use, store at 4°C for up to one month. Avoid repeated freeze-thaw cycles.                                     |
| Host                 | Rabbit   |
| Uniprot ID           | P63165   |

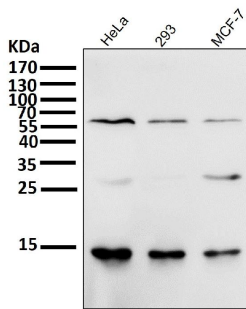
### Technical Details

|                     |   |
|---------------------|---|
| Immunogen           | A synthesized peptide derived from human Sumo 1   |
| Isotype             | Rabbit IgG  |
| Form                | Liquid  |
| Concentration       | Actual concentration vary by lot. Use suggested dilution ratio to decide dilution procedure.  |
| Purification        | Affinity-chromatography   |
| Suggested Dilutions | <p>Dilute the sample so that the expected range of concentrations fall within the detection range of this kit.</p> <p>If the expected range of concentration is unknown, a pilot test should be conducted to decide the optimal dilution ratio for your samples.</p> <p>Some PubMed article(s) citing the expression level of this target are as follows:</p> <p>Boster Bio's internal QC testing used:</p> <p>WB 1:500-1:2000<br/>IHC 1:50-1:200<br/>ICC/IF 1:50-1:200<br/>IP 1:50<br/>FC 1:50</p> |

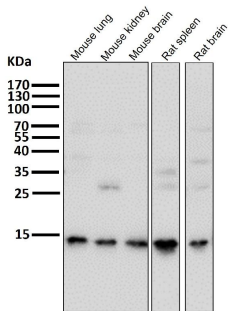
## Anti-Sumo 1 Rabbit Monoclonal Antibody (M00631-1) Images



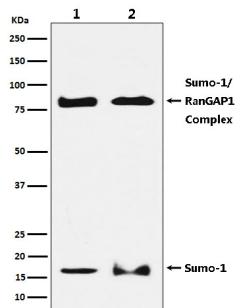
All lanes use the Antibody at 1:1K dilution for 1 hour at room temperature.



All lanes use the Antibody at 1:1K dilution for 1 hour at room temperature.

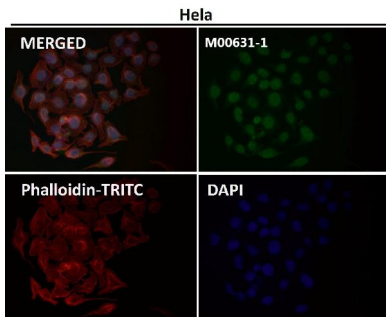
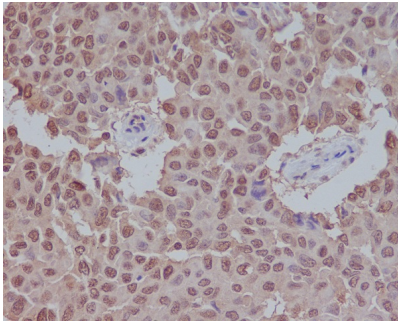


All lanes use the Antibody at 1:1K dilution for 1 hour at room temperature.

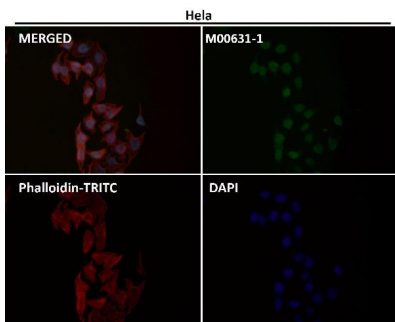


Western blot analysis of SUMO1 expression in (1) HeLa cell lysate; (2) NIH/3T3 cell lysate.

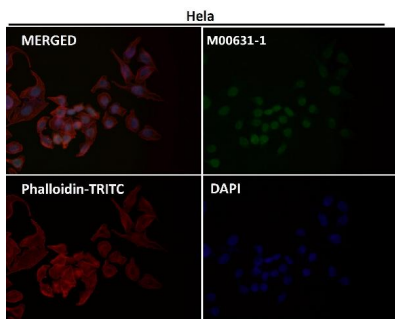
Immunohistochemical analysis of paraffin-embedded human breast carcinoma, using Sumo 1 Antibody .



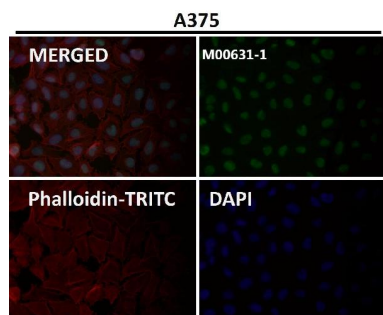
Immunofluorescent analysis using the Antibody at 1:50 dilution.



Immunofluorescent analysis using the Antibody at 1:150 dilution.

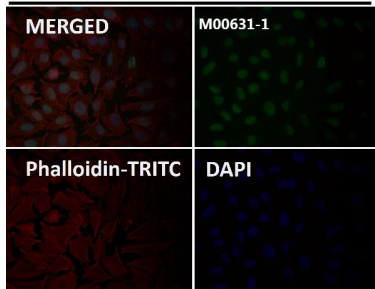


Immunofluorescent analysis using the Antibody at 1:500 dilution.



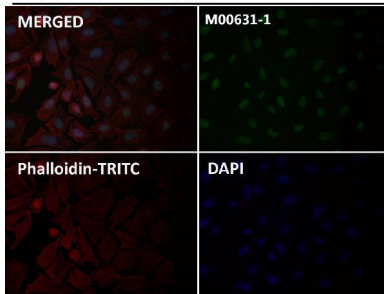
Immunofluorescent analysis using the Antibody at 1:50 dilution.

A375



Immunofluorescent analysis using the Antibody at 1:150 dilution.

A375



Immunofluorescent analysis using the Antibody at 1:500 dilution.

## 1 Publications Citing This Product

1. PubMed ID: 26493771, The SUMO Protease SENP3 Orchestrates G2-M Transition and Spindle Assembly in Mouse Oocytes

Visit [bosterbio.com/anti-sumo-1-rabbit-monoclonal-antibody-m00631-1-boster.html](https://bosterbio.com/anti-sumo-1-rabbit-monoclonal-antibody-m00631-1-boster.html) to see all 1 publications.

## Submit a product review to Biocompare.com

Submit a review of this product to Biocompare.com to receive a \$20 Amazon.com giftcard! Your reviews help your fellow scientists make the right decisions. Thank you for your contribution.



Anti-Sumo 1 Rabbit Monoclonal Antibody