

Anti-DKK1 Rabbit Monoclonal Antibody

Catalog Number: M00632

About DKK1

Dynamin-related GTPase required for mitochondrial fusion and regulation of apoptosis. May form a diffusion barrier for proteins stored in mitochondrial cristae. Proteolytic processing in response to intrinsic apoptotic signals may lead to disassembly of OPA1 oligomers and release of the caspase activator cytochrome C (CYCS) into the mitochondrial intermembrane space.

Overview

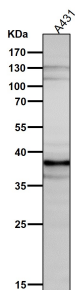
Product Name	Anti-DKK1 Rabbit Monoclonal Antibody
Reactive Species	Human, Rat
Description	Boster Bio Anti-DKK1 Rabbit Monoclonal Antibody catalog # M00632. Tested in WB, IHC, ICC/IF, Flow Cytometry applications. This antibody reacts with Human, Rat.
Application	Flow Cytometry, IF, IHC, ICC, WB
Clonality	Monoclonal FHG-4
Formulation	Rabbit IgG in phosphate buffered saline, pH 7.4, 150mM NaCl, 0.02% sodium azide and 50% glycerol, 0.4-0.5mg/ml BSA.
Storage Instructions	Store at -20°C for one year. For short term storage and frequent use, store at 4°C for up to one month. Avoid repeated freeze-thaw cycles.
Host	Rabbit
Uniprot ID	O94907

Technical Details

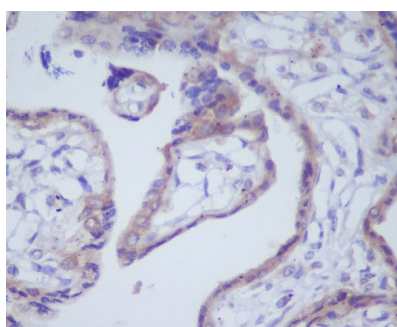
Immunogen	A synthesized peptide derived from human DKK1
Isotype	Rabbit IgG
Form	Liquid
Concentration	Actual concentration vary by lot. Use suggested dilution ratio to decide dilution procedure.
Purification	Affinity-chromatography
Suggested Dilutions	Dilute the sample so that the expected range of concentrations fall within the detection range of this kit. If the expected range of concentration is unknown, a pilot test should be conducted to decide the optimal dilution ratio for your samples. Some PubMed article(s) citing the expression level of this target are as follows: Boster Bio's internal QC testing used:

	WB 1:1000-1:2000 IHC 1:50-1:200 ICC/IF 1:50-1:200 FC 1:50
--	--

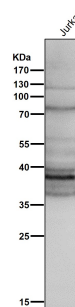
Anti-DKK1 Rabbit Monoclonal Antibody (M00632) Images



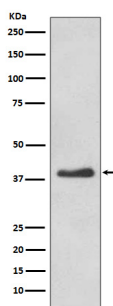
All lanes use the Antibody at 1:5K dilution for 1 hour at room temperature.



Immunohistochemical analysis of paraffin-embedded human placenta, using DKK1 Antibody.



All lanes use the Antibody at 1:5K dilution for 1 hour at room temperature.



Western blot analysis of DKK1 expression in HeLa cell lysate.

Submit a product review to Biocompare.com

Submit a review of this product to Biocompare.com to receive a \$20 Amazon.com giftcard! Your reviews help your fellow scientists make the right decisions. Thank you for your contribution.



Anti-DKK1 Rabbit Monoclonal Antibody