

Anti-Lactoferrin Rabbit Monoclonal Antibody

Catalog Number: M00633-2

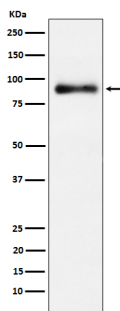
Overview

Product Name	Anti-Lactoferrin Rabbit Monoclonal Antibody
Reactive Species	Human
Description	Boster Bio Anti-Lactoferrin Rabbit Monoclonal Antibody catalog # M00633-2. Tested in WB, ICC/IF, IP applications. This antibody reacts with Human.
Application	IP, IF, ICC, WB
Clonality	Monoclonal 22L00
Formulation	Rabbit IgG in phosphate buffered saline, pH 7.4, 150mM NaCl, 0.02% sodium azide and 50% glycerol, 0.4-0.5mg/ml BSA.
Storage Instructions	Store at -20°C for one year. For short term storage and frequent use, store at 4°C for up to one month. Avoid repeated freeze-thaw cycles.
Host	Rabbit
Uniprot ID	P02788

Technical Details

Immunogen	A synthesized peptide derived from human Lactoferrin
Isotype	IgG
Form	Liquid
Concentration	Actual concentration vary by lot. Use suggested dilution ratio to decide dilution procedure.
Purification	Affinity-chromatography
Suggested Dilutions	WB 1:500-1:2000 ICC/IF 1:50-1:200 IP 1:50

Anti-Lactoferrin Rabbit Monoclonal Antibody (M00633-2) Images



Western blot analysis of Lactoferrin expression in HeLa cell lysate.

Submit a product review to Biocompare.com

Submit a review of this product to Biocompare.com to receive a \$20 Amazon.com giftcard! Your reviews help your fellow scientists make the right decisions. Thank you for your contribution.



Anti-Lactoferrin Rabbit Monoclonal Antibody