

Anti-Osteopontin (SPP1) Mouse Monoclonal Antibody [Clone ID: OTI5E4]

Catalog Number: M00634-1

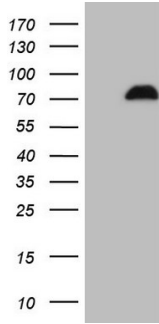
Overview

Product Name	Anti-Osteopontin (SPP1) Mouse Monoclonal Antibody [Clone ID: OTI5E4]
Reactive Species	Human
Description	Boster Bio SPP1 mouse monoclonal antibody, clone OTI5E4 (formerly 5E4). Catalog# M00634-1. Tested in IHC, WB. This antibody reacts with Human.
Application	IHC, WB
Clonality	Monoclonal OTI5E4
Formulation	PBS (pH 7.3) containing 1% stabilizing protein, 50% glycerol and 0.02% sodium azide. This antibody is supplied in a stabilized formulation. Compatibility with conjugation reactions depends on the chemistry of the conjugation method used. For conjugation methods that are not compatible with the stabilizing components present in this formulation, a carrier-free antibody format is required.
Storage Instructions	Store at -20°C as received.
Host	Mouse
Uniprot ID	P10451

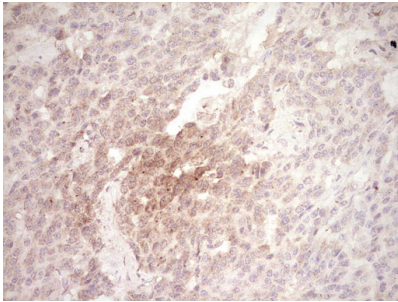
Technical Details

Immunogen	Human recombinant protein fragment corresponding to amino acids 17-314 of human SPP1 (NP_001035147) produced in E.coli.
Isotype	IgG1
Concentration	1 mg/ml
Purification	Purified from mouse ascites fluids or tissue culture supernatant by affinity chromatography (protein A/G)
Suggested Dilutions	WB 1:2000 IHC 1:150

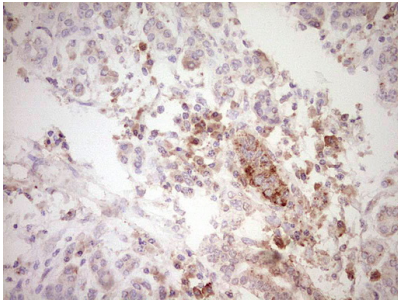
Anti-Osteopontin (SPP1) Mouse Monoclonal Antibody [Clone ID: OTI5E4] (M00634-1) Images



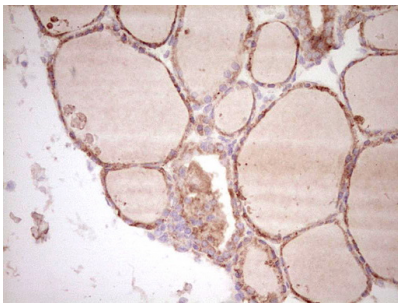
HEK293T cells were transfected with the pCMV6-ENTRY control (Left lane) or pCMV6-ENTRY SPP1 (Right lane) cDNA for 48 hrs and lysed. Equivalent amounts of cell lysates (5 ug per lane) were separated by SDS-PAGE and immunoblotted with anti-SPP1.



Immunohistochemical staining of paraffin-embedded Carcinoma of Human lung tissue using anti-SPP1 mouse monoclonal antibody. (Heat-induced epitope retrieval by 1 mM EDTA in 10mM Tris)

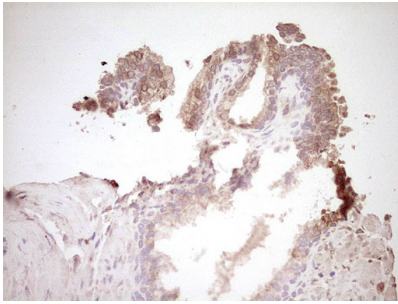


Immunohistochemical staining of paraffin-embedded Carcinoma of Human pancreas tissue using anti-SPP1 mouse monoclonal antibody. (Heat-induced epitope retrieval by 1 mM EDTA in 10mM Tris)

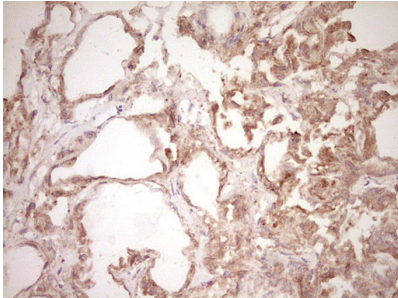


Immunohistochemical staining of paraffin-embedded Human thyroid tissue within the normal limits using anti-SPP1 mouse monoclonal antibody. (Heat-induced epitope retrieval by 1 mM EDTA in 10mM Tris)

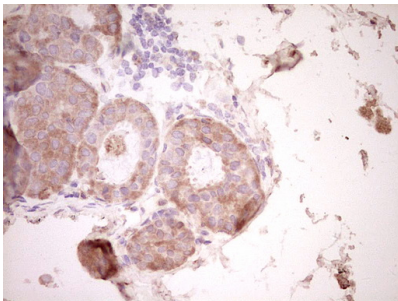
Immunohistochemical staining of paraffin-embedded Human prostate tissue within the normal limits using anti-SPP1 mouse monoclonal antibody. (Heat-induced epitope retrieval by 1 mM EDTA in 10mM Tris)



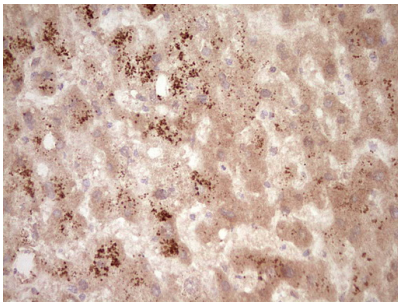
Immunohistochemical staining of paraffin-embedded Carcinoma of Human prostate tissue using anti-SPP1 mouse monoclonal antibody. (Heat-induced epitope retrieval by 1 mM EDTA in 10mM Tris)



Immunohistochemical staining of paraffin-embedded Adenocarcinoma of Human breast tissue using anti-SPP1 mouse monoclonal antibody. (Heat-induced epitope retrieval by 1 mM EDTA in 10mM Tris)



Immunohistochemical staining of paraffin-embedded Human liver tissue within the normal limits using anti-SPP1 mouse monoclonal antibody. (Heat-induced epitope retrieval by 1 mM EDTA in 10mM Tris)



Immunohistochemical staining of paraffin-embedded Human lung tissue within the normal limits using anti-SPP1 mouse monoclonal antibody. (Heat-induced epitope retrieval by 1 mM EDTA in 10mM Tris)

Submit a product review to [Biocompare.com](https://www.biocompare.com)



Submit a review of this product to Biocompare.com to receive a \$20 Amazon.com giftcard! Your reviews help your fellow scientists make the right decisions. Thank you for your contribution.

Anti-Osteopontin (SPP1) Mouse Monoclonal Antibody [Clone ID: OTI5E4]

For Research Use Only. Not for use in diagnostic procedures.