

Anti-PAI1 Rabbit Monoclonal Antibody

Catalog Number: M00637

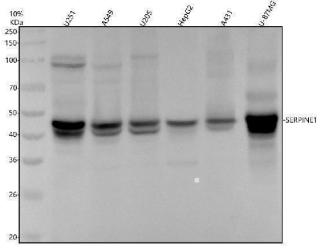
Overview

Product Name	Anti-PAI1 Rabbit Monoclonal Antibody
Reactive Species	Human
Description	Boster Bio Anti-PAI1 Rabbit Monoclonal Antibody catalog # M00637. Tested in WB, ICC/IF, IP, Flow Cytometry applications. This antibody reacts with Human.
Application	Flow Cytometry, IP, IF, ICC, WB
Clonality	Monoclonal ABHG-19
Formulation	Rabbit IgG in stabilizing components, phosphate buffered saline, pH 7.4, 150mM NaCl, 0.02% sodium azide and 50% glycerol. *This antibody is supplied in a stabilized formulation. Compatibility with conjugation reactions depends on the chemistry of the conjugation method used. For conjugation methods that are not compatible with the stabilizing components present in this formulation, a carrier-free antibody format is required.
Storage Instructions	Store at -20°C for one year. For short term storage and frequent use, store at 4°C for up to one month. Avoid repeated freeze-thaw cycles.
Host	Rabbit
Uniprot ID	P05121

Technical Details

Immunogen	A synthesized peptide derived from human PAI1
Isotype	Rabbit IgG
Form	Liquid
Concentration	0.5mg/ml
Purification	Affinity-chromatography
Suggested Dilutions	WB 1:500-2000 ICC/IF 1:50-200 IP 1:20 FC 1:20

Anti-PAI1 Rabbit Monoclonal Antibody (M00637) Images



Western blot analysis of PAI-1/SERPINE1 using anti-PAI-1/SERPINE1 antibody (M00637). Electrophoresis was performed on a 10% SDS-PAGE gel at 80V (Stacking gel) / 120V (Resolving gel) for 2 hours. The sample well of each lane was loaded with 30 ug of sample under reducing conditions. Lane 1: human U251 whole cell lysates, Lane 2: human A549 whole cell lysates, Lane 3: human U2OS whole cell lysates, Lane 4: human HepG2 whole cell lysates, Lane 5: human A431 whole cell lysates, Lane 6: human U-87MG whole cell lysates. After electrophoresis, proteins were transferred to a nitrocellulose membrane at 150 mA for 50-90 minutes. Blocked the membrane with 5% non-fat milk/TBS for 1.5 hour at RT. The membrane was incubated with rabbit anti-PAI-1/SERPINE1 antigen affinity purified monoclonal antibody (M00637) at 1: 500 overnight at 4°C, then washed with TBS-0.1%Tween 3 times with 5 minutes each and probed with a goat anti-rabbit IgG-HRP secondary antibody at a dilution of 1:5000 for 1.5 hour at RT. The signal is developed using an ECL Plus Western Blotting Substrate (Catalog # AR1196-200) with Tanon 5200 system. A specific band was detected for PAI-1/SERPINE1 at approximately 45 kDa. The expected band size for PAI-1/SERPINE1 is at 45 kDa.

Submit a product review to [Biocompare.com](https://www.biocompare.com)

Submit a review of this product to [Biocompare.com](https://www.biocompare.com) to receive a \$20 Amazon.com giftcard! Your reviews help your fellow scientists make the right decisions. Thank you for your contribution.



Anti-PAI1 Rabbit Monoclonal Antibody

For Research Use Only. Not for use in diagnostic procedures.