

## Anti-IL1RA Rabbit Monoclonal Antibody

Catalog Number: M00651

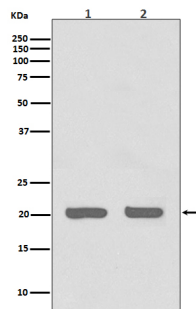
### Overview

Product Name	Anti-IL1RA Rabbit Monoclonal Antibody
Reactive Species	Human, Mouse, Rat
Description	Boster Bio Anti-IL1RA Rabbit Monoclonal Antibody catalog # M00651. Tested in WB, IHC, ICC/IF, IP, Flow Cytometry applications. This antibody reacts with Human, Mouse, Rat.
Application	Flow Cytometry, IP, IF, IHC, ICC, WB
Clonality	Monoclonal GEI-9
Formulation	Rabbit IgG in stabilizing components, phosphate buffered saline, pH 7.4, 150mM NaCl, 0.02% sodium azide and 50% glycerol. *This antibody is supplied in a stabilized formulation. Compatibility with conjugation reactions depends on the chemistry of the conjugation method used. For conjugation methods that are not compatible with the stabilizing components present in this formulation, a carrier-free antibody format is required.
Storage Instructions	Store at -20°C for one year. For short term storage and frequent use, store at 4°C for up to one month. Avoid repeated freeze-thaw cycles.
Host	Rabbit
Uniprot ID	P18510

### Technical Details

Immunogen	A synthesized peptide derived from human IL1RA
Isotype	Rabbit IgG
Form	Liquid
Concentration	0.5mg/ml
Purification	Affinity-chromatography
Suggested Dilutions	WB 1:1000-5000 IHC 1:50-200 ICC/IF 1:50-200 IP 1:20 FC 1:20

## Anti-IL1RA Rabbit Monoclonal Antibody (M00651) Images



Western blot analysis of IL1RA expression in (1) HeLa cell lysate; (2) 3T3 cell lysate.

## 1 Publications Citing This Product

1. PubMed ID: 25267210, TRAF6 upregulation in spinal astrocytes maintains neuropathic pain by integrating TNF- $\alpha$  and IL-1 $\beta$  signaling

Visit [bosterbio.com/anti-il1ra-rabbit-monoclonal-antibody-m00651-boster.html](http://bosterbio.com/anti-il1ra-rabbit-monoclonal-antibody-m00651-boster.html) to see all 1 publications.

## Submit a product review to Biocompare.com

Submit a review of this product to Biocompare.com to receive a \$20 Amazon.com giftcard! Your reviews help your fellow scientists make the right decisions. Thank you for your contribution.



Anti-IL1RA Rabbit Monoclonal Antibody

For Research Use Only. Not for use in diagnostic procedures.