

## Anti-IL1RA (IL1RN) Mouse Monoclonal Antibody [Clone ID: OTI2B1]

Catalog Number: M00651-2

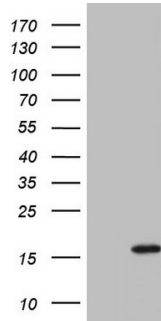
### Overview

Product Name	Anti-IL1RA (IL1RN) Mouse Monoclonal Antibody [Clone ID: OTI2B1]
Reactive Species	Human
Description	Boster Bio IL1RN mouse monoclonal antibody, clone OTI2B1 (formerly 2B1). Catalog# M00651-2. Tested in IHC, WB. This antibody reacts with Human.
Application	IHC, WB
Clonality	Monoclonal OTI2B1
Formulation	PBS (pH 7.3) containing 1% stabilizing protein, 50% glycerol and 0.02% sodium azide. This antibody is supplied in a stabilized formulation. Compatibility with conjugation reactions depends on the chemistry of the conjugation method used. For conjugation methods that are not compatible with the stabilizing components present in this formulation, a carrier-free antibody format is required.
Storage Instructions	Store at -20°C as received.
Host	Mouse
Uniprot ID	P18510

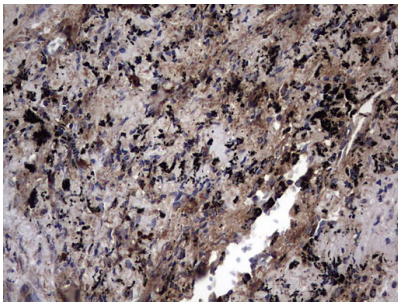
### Technical Details

Immunogen	Full length human recombinant protein of human IL1RN (NP_776215) produced in E.coli.
Isotype	IgG2b
Concentration	1 mg/ml
Purification	Purified from mouse ascites fluids or tissue culture supernatant by affinity chromatography (protein A/G)
Suggested Dilutions	WB 1:2000 IHC 1:150

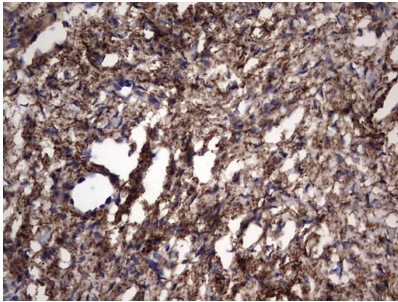
## Anti-IL1RA (IL1RN) Mouse Monoclonal Antibody [Clone ID: OTI2B1] (M00651-2) Images



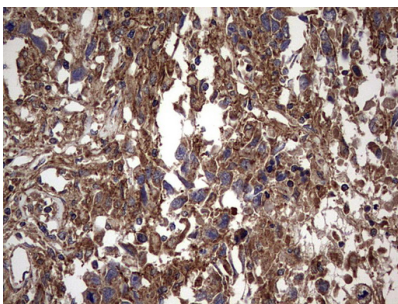
HEK293T cells were transfected with the pCMV6-ENTRY control (Left lane) or pCMV6-ENTRY IL1RN (Right lane) cDNA for 48 hrs and lysed. Equivalent amounts of cell lysates (5 ug per lane) were separated by SDS-PAGE and immunoblotted with anti-IL1RN.



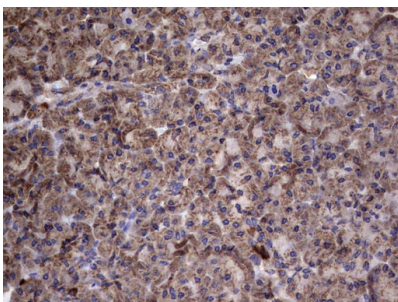
Immunohistochemical staining of paraffin-embedded Carcinoma of Human lung tissue using anti-IL1RN mouse monoclonal antibody. (Heat-induced epitope retrieval by 1 mM EDTA in 10mM Tris)



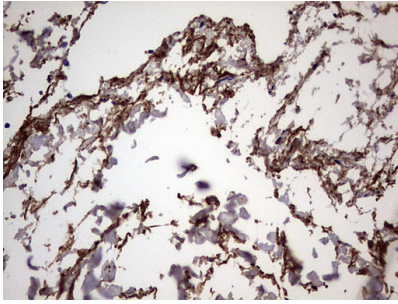
Immunohistochemical staining of paraffin-embedded Human Ovary tissue within the normal limits using anti-IL1RN mouse monoclonal antibody. (Heat-induced epitope retrieval by 1 mM EDTA in 10mM Tris)



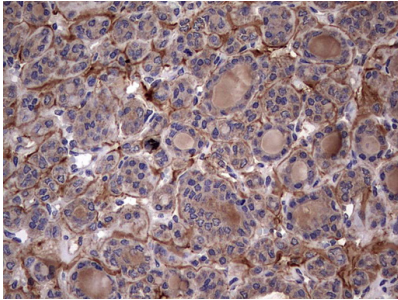
Immunohistochemical staining of paraffin-embedded Adenocarcinoma of Human ovary tissue using anti-IL1RN mouse monoclonal antibody. (Heat-induced epitope retrieval by 1 mM EDTA in 10mM Tris)



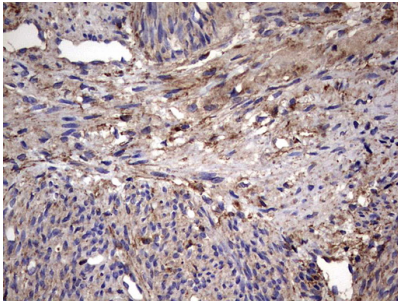
Immunohistochemical staining of paraffin-embedded Human pancreas tissue within the normal limits using anti-IL1RN mouse monoclonal antibody. (Heat-induced epitope retrieval by 1 mM EDTA in 10mM Tris)



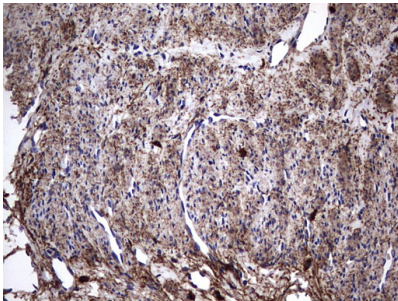
Immunohistochemical staining of paraffin-embedded Human thyroid tissue within the normal limits using anti-IL1RN mouse monoclonal antibody. (Heat-induced epitope retrieval by 1 mM EDTA in 10mM Tris)



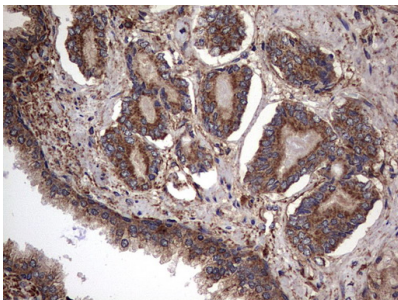
Immunohistochemical staining of paraffin-embedded Carcinoma of Human thyroid tissue using anti-IL1RN mouse monoclonal antibody. (Heat-induced epitope retrieval by 1 mM EDTA in 10mM Tris)



Immunohistochemical staining of paraffin-embedded Human endometrium tissue within the normal limits using anti-IL1RN mouse monoclonal antibody. (Heat-induced epitope retrieval by 1 mM EDTA in 10mM Tris)

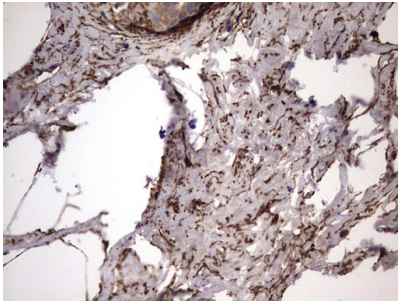


Immunohistochemical staining of paraffin-embedded Adenocarcinoma of Human endometrium tissue using anti-IL1RN mouse monoclonal antibody. (Heat-induced epitope retrieval by 1 mM EDTA in 10mM Tris)

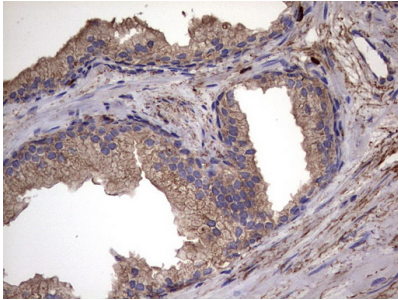


Immunohistochemical staining of paraffin-embedded Human prostate tissue within the normal limits using anti-IL1RN mouse monoclonal antibody. (Heat-induced epitope retrieval by 1 mM EDTA in 10mM Tris)

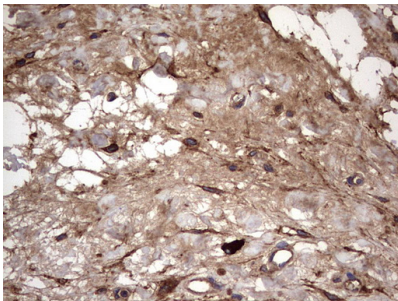
Immunohistochemical staining of paraffin-embedded Human breast tissue within the normal limits using anti-IL1RN



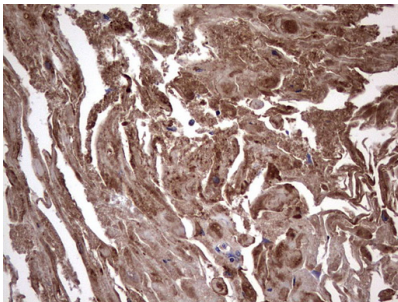
mouse monoclonal antibody. (Heat-induced epitope retrieval by 1 mM EDTA in 10mM Tris)



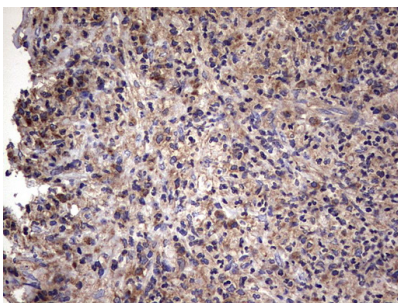
Immunohistochemical staining of paraffin-embedded Carcinoma of Human prostate tissue using anti-IL1RN mouse monoclonal antibody. (Heat-induced epitope retrieval by 1 mM EDTA in 10mM Tris)



Immunohistochemical staining of paraffin-embedded Human bladder tissue within the normal limits using anti-IL1RN mouse monoclonal antibody. (Heat-induced epitope retrieval by 1 mM EDTA in 10mM Tris)

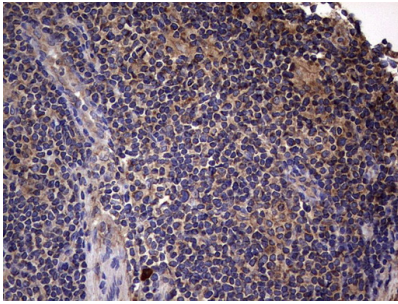


Immunohistochemical staining of paraffin-embedded Carcinoma of Human bladder tissue using anti-IL1RN mouse monoclonal antibody. (Heat-induced epitope retrieval by 1 mM EDTA in 10mM Tris)

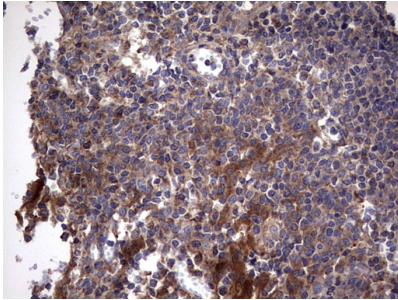


Immunohistochemical staining of paraffin-embedded Human lymph node tissue within the normal limits using anti-IL1RN mouse monoclonal antibody. (Heat-induced epitope retrieval by 1 mM EDTA in 10mM Tris)

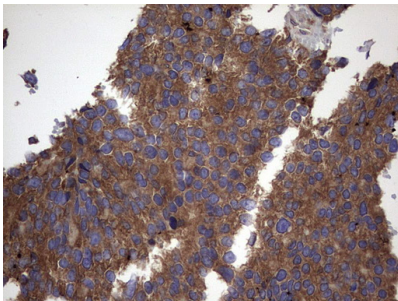
Immunohistochemical staining of paraffin-embedded Human lymphoma tissue using anti-IL1RN mouse monoclonal antibody. (Heat-induced epitope retrieval by 1 mM EDTA in



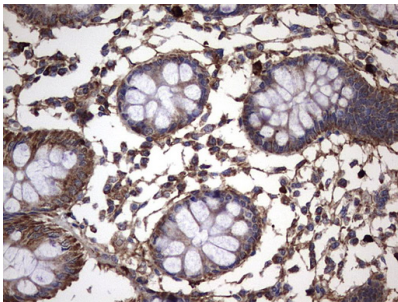
10mM Tris



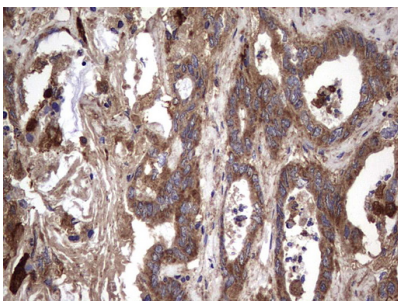
Immunohistochemical staining of paraffin-embedded Human tonsil within the normal limits using anti-IL1RN mouse monoclonal antibody. (Heat-induced epitope retrieval by 1 mM EDTA in 10mM Tris)



Immunohistochemical staining of paraffin-embedded Adenocarcinoma of Human breast tissue using anti-IL1RN mouse monoclonal antibody. (Heat-induced epitope retrieval by 1 mM EDTA in 10mM Tris)

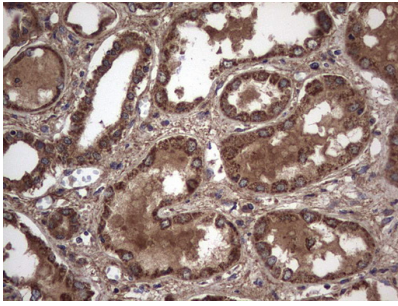


Immunohistochemical staining of paraffin-embedded Human colon tissue within the normal limits using anti-IL1RN mouse monoclonal antibody. (Heat-induced epitope retrieval by 1 mM EDTA in 10mM Tris)

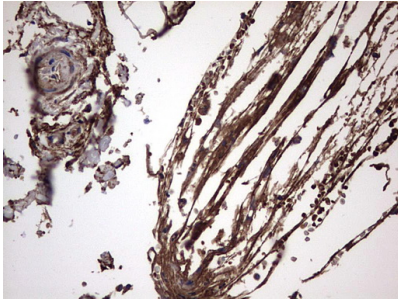


Immunohistochemical staining of paraffin-embedded Adenocarcinoma of Human colon tissue using anti-IL1RN mouse monoclonal antibody. (Heat-induced epitope retrieval by 1 mM EDTA in 10mM Tris)

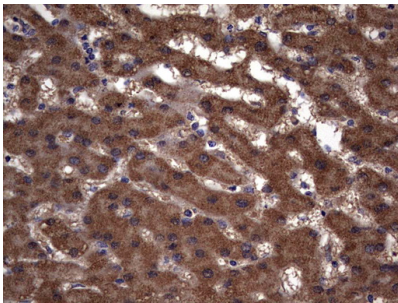
Immunohistochemical staining of paraffin-embedded Human Kidney tissue within the normal limits using anti-IL1RN mouse monoclonal antibody. (Heat-induced epitope retrieval



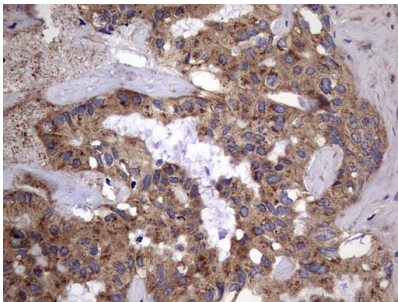
by 1 mM EDTA in 10mM Tris



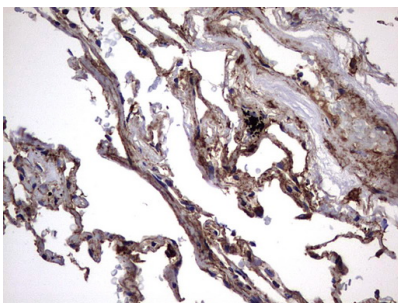
Immunohistochemical staining of paraffin-embedded Carcinoma of Human kidney tissue using anti-IL1RN mouse monoclonal antibody. (Heat-induced epitope retrieval by 1 mM EDTA in 10mM Tris



Immunohistochemical staining of paraffin-embedded Human liver tissue within the normal limits using anti-IL1RN mouse monoclonal antibody. (Heat-induced epitope retrieval by 1 mM EDTA in 10mM Tris



Immunohistochemical staining of paraffin-embedded Carcinoma of Human liver tissue using anti-IL1RN mouse monoclonal antibody. (Heat-induced epitope retrieval by 1 mM EDTA in 10mM Tris



Immunohistochemical staining of paraffin-embedded Human lung tissue within the normal limits using anti-IL1RN mouse monoclonal antibody. (Heat-induced epitope retrieval by 1 mM EDTA in 10mM Tris

Submit a product review to [Biocompare.com](https://www.biocompare.com)



Submit a review of this product to Biocompare.com to receive a \$20 Amazon.com giftcard! Your reviews help your fellow scientists make the right decisions. Thank you for your contribution.

Anti-IL1RA (IL1RN) Mouse Monoclonal Antibody [Clone ID: OTI2B1]

For Research Use Only. Not for use in diagnostic procedures.