

Anti-Ms CD62L Purified Sell Monoclonal Antibody

Catalog Number: M00652-1

Introduction

The clone MYG13 recognizes CD22 cell surface antigen, a 130-140kDa protein. The expression of CD22 is primarily restricted to the normal and neoplastic B cells but does not express on other hematopoietic cells. The initiation of expression of CD22 starts in the cytoplasm of pro-B and pre-B cells. Although CD22 is not expressed by plasma cells, it is abundantly expressed by the follicular mantle and marginal zone B-cells. Being a member of the immunoglobulin superfamily, CD22 serves as an adhesion receptor for sialic acid-bearing ligands expressed on erythrocytes and leukocytes. The role of CD22 in the activation of B-cells is primarily associated with tyrosine kinases mediated signal transduction pathways.

This antibody is routinely tested by flow cytometric analysis. Flow cytometry and other applications were tested during antibody development by CapricoBio or are reported in the literature.

Application Information

Each lot of this antibody has been pre-titrated and tested by flow cytometric analysis of human PBMCs such that 5ul of this product is sufficient for staining of 1 million cells in a 100ul staining volume or 100ul of whole blood. It is recommended that antibody reactivity be empirically titrated for optimal performance in the application of interest.

About Sell

CD62L (L-selectin) is an adhesion glycoprotein that is constitutively expressed on the cell surface of leukocytes and mediates their homing to inflammatory sites and peripheral lymph nodes by enabling rolling along the venular wall. CD62L is also involved in activation-induced neutrophil aggregation. Activation-dependent CD62L shedding, however, counteracts neutrophil rolling. CD62L has also signaling roles including enhance of chemokine receptor expression. Similarly to CD62P, the major ligand of CD62L is PSGL-1 (P-selectin glycoprotein ligand-1).

Overview

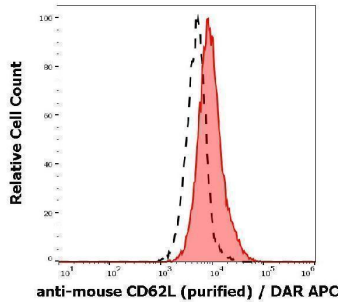
Product Name	Anti-Ms CD62L Purified Sell Monoclonal Antibody
Reactive Species	Mouse
Description	Boster Bio Anti-Ms CD62L Purified Sell Monoclonal Antibody (Catalog# M00652-1). Tested in Flow Cytometry, IP, IHC-P, IHC-F, ICC application(s). This antibody reacts with Mouse.
Conjugate	APC
Application	Flow Cytometry, IP, IHC-P, IHC-F, ICC
Clonality	Monoclonal Mel-14
Formulation	Phosphate buffered saline (PBS), pH 7.4, 15 mM sodium azide
Storage Instructions	Store at 2-8°C. Do not freeze.
Host	Rat

Uniprot ID	Q3TCF3
------------	--------

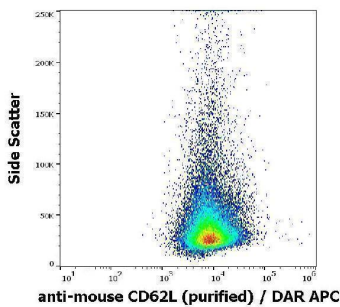
Technical Details

Immunogen	C3H/eb mouse B cell lymphoma 38C-13. The rat monoclonal antibody MEL-14 reacts with an extracellular epitope of murine CD62L (L-selectin), a 75 kDa single chain type I glycoprotein expressed on most peripheral blood B lymphocytes, T lymphocytes, monocytes and granulocytes; it is also present on a subset of NK cells and certain hematopoietic malignant cells.
Predicted Reactive Species	Bovine
Isotype	Rat IgG2a
Form	Liquid
Concentration	1 mg/ml
Purification	Purified by protein-G affinity chromatography.
Suggested Dilutions	Flow cytometry: 1-4 ug/ml.

Anti-Ms CD62L Purified Sell Monoclonal Antibody (M00652-1) Images



Separation of murine splenocytes stained anti-mouse CD62L (Mel-14) purified antibody (concentration in sample 4 $\mu\text{g/ml}$, DAR APC, red-filled) from murine splenocytes unstained by primary antibody (DAR APC, black-dashed) in flow cytometry analysis (surface staining).



Flow cytometry surface staining pattern of murine splenocytes stained using anti-mouse CD62L (Mel-14) purified antibody (concentration in sample 4 $\mu\text{g/ml}$, DAR APC).

Submit a product review to Biocompare.com

Submit a review of this product to Biocompare.com to receive a \$20 Amazon.com giftcard! Your reviews help your fellow scientists make the right decisions. Thank you for your contribution.



Anti-Ms CD62L Purified Sell Monoclonal Antibody

For Research Use Only. Not for use in diagnostic procedures.