

Anti-Hu CD62L Purified SELL Monoclonal Antibody

Catalog Number: M00652-2

About SELL

CD62L (L-selectin) is an adhesion glycoprotein that is constitutively expressed on the cell surface of leukocytes and mediates their homing to inflammatory sites and peripheral lymph nodes by enabling rolling along the venular wall. CD62L is also involved in activation-induced neutrophil aggregation. Activation-dependent CD62L shedding, however, counteracts neutrophil rolling. CD62L has also signaling roles including enhance of chemokine receptor expression. Similarly to CD62P, the major ligand of CD62L is PSGL-1 (P-selectin glycoprotein ligand-1).

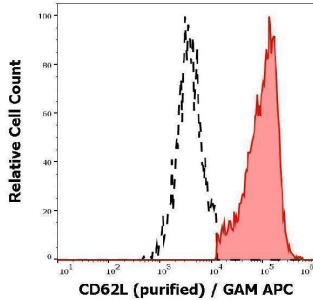
Overview

| | |
|----------------------|--|
| Product Name | Anti-Hu CD62L Purified SELL Monoclonal Antibody |
| Reactive Species | Human |
| Description | Boster Bio Anti-Hu CD62L Purified SELL Monoclonal Antibody (Catalog# M00652-2). Tested in Flow Cytometry, IP, WB, IHC-F application(s). This antibody reacts with Human. |
| Application | Flow Cytometry, IP, IHC-F, WB |
| Clonality | Monoclonal DREG56 |
| Formulation | Phosphate buffered saline (PBS), pH 7.4, 15 mM sodium azide |
| Storage Instructions | Store at 2-8°C. Do not freeze. |
| Host | Mouse |
| Uniprot ID | P14151 |

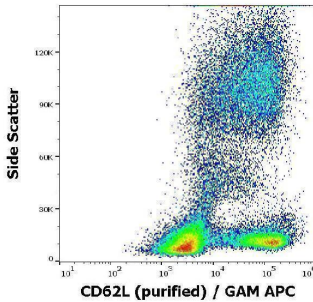
Technical Details

| | |
|----------------------------|---|
| Immunogen | PMA-activated human peripheral blood leukocytes. The mouse monoclonal antibody DREG56 recognizes an extracellular epitope of CD62L / L-selectin, a 65-76 kDa cell surface protein, expressed by neutrophils, monocytes, and subsets of T, B, and NK cells, that interacts with specific carbohydrates exposed on activated endothelial cells. |
| Predicted Reactive Species | Primate |
| Isotype | Mouse IgG1 |
| Form | Liquid |
| Concentration | 1 mg/ml |
| Purification | Purified by protein-A affinity chromatography. |
| Suggested Dilutions | Flow cytometry: 2 ug/ml. Western blotting: Non-reducing conditions. |

Anti-Hu CD62L Purified SELL Monoclonal Antibody (M00652-2) Images



Separation of human CD62L positive lymphocytes (red-filled) from CD62L negative lymphocytes (black-dashed) in flow cytometry analysis (surface staining) of human peripheral whole blood stained using anti-human CD62L (DREG56) purified antibody (concentration in sample 1 µg/ml) GAM APC.



Flow cytometry surface staining pattern of human peripheral blood stained using anti-human CD62L (DREG56) purified antibody (concentration in sample 1 µg/ml) GAM APC.

Submit a product review to [Biocompare.com](https://www.biocompare.com)

Submit a review of this product to [Biocompare.com](https://www.biocompare.com) to receive a \$20 Amazon.com giftcard! Your reviews help your fellow scientists make the right decisions. Thank you for your contribution.



Anti-Hu CD62L Purified SELL Monoclonal Antibody

For Research Use Only. Not for use in diagnostic procedures.