

Anti-MMP14/Mt1 Mmp Rabbit Monoclonal Antibody

Catalog Number: M00656

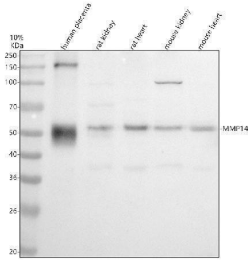
Overview

Product Name	Anti-MMP14/Mt1 Mmp Rabbit Monoclonal Antibody
Reactive Species	Human, Mouse, Rat
Description	Boster Bio Anti-MMP14/Mt1 Mmp Rabbit Monoclonal Antibody catalog # M00656. Tested in WB, IHC, ICC/IF, IP, Flow Cytometry applications. This antibody reacts with Human, Mouse, Rat.
Application	Flow Cytometry, IP, IF, IHC, ICC, WB
Clonality	Monoclonal BFD-13
Formulation	Rabbit IgG in stabilizing components, phosphate buffered saline, pH 7.4, 150mM NaCl, 0.02% sodium azide and 50% glycerol. *This antibody is supplied in a stabilized formulation. Compatibility with conjugation reactions depends on the chemistry of the conjugation method used. For conjugation methods that are not compatible with the stabilizing components present in this formulation, a carrier-free antibody format is required.
Storage Instructions	Store at -20°C for one year. For short term storage and frequent use, store at 4°C for up to one month. Avoid repeated freeze-thaw cycles.
Host	Rabbit
Uniprot ID	P50281

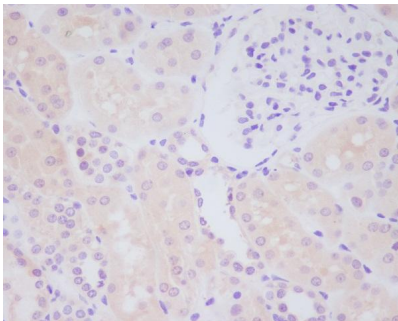
Technical Details

Immunogen	A synthesized peptide derived from human MMP14
Isotype	Rabbit IgG
Form	Liquid
Concentration	0.5mg/ml
Purification	Affinity-chromatography
Suggested Dilutions	WB 1:500-2000 IHC 1:50-200 ICC/IF 1:50-200 IP 1:20 FC 1:20

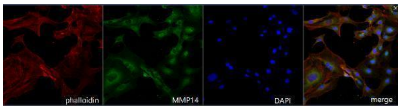
Anti-MMP14/Mt1 Mmp Rabbit Monoclonal Antibody (M00656) Images



Western blot analysis of MT1-MMP/MMP14 using anti-MT1-MMP/MMP14 antibody (M00656). Electrophoresis was performed on a 10% SDS-PAGE gel at 80V (Stacking gel) / 120V (Resolving gel) for 2 hours. The sample well of each lane was loaded with 30 ug of sample under reducing conditions. Lane 1: human placenta tissue lysates, Lane 2: rat kidney tissue lysates, Lane 3: rat heart tissue lysates, Lane 4: mouse kidney tissue lysates, Lane 5: mouse heart tissue lysates. After electrophoresis, proteins were transferred to a nitrocellulose membrane at 150 mA for 50-90 minutes. Blocked the membrane with 5% non-fat milk/TBS for 1.5 hour at RT. The membrane was incubated with rabbit anti-MT1-MMP/MMP14 antigen affinity purified monoclonal antibody (M00656) at 1:1000 overnight at 4°C, then washed with TBS-0.1%Tween 3 times with 5 minutes each and probed with a goat anti-rabbit IgG-HRP secondary antibody at a dilution of 1:5000 for 1.5 hour at RT. The signal is developed using an ECL Plus Western Blotting Substrate (Catalog # AR1196-200) with Tanon 5200 system. A specific band was detected for MT1-MMP/MMP14 at approximately 55 kDa. The expected band size for MT1-MMP/MMP14 is at 66 kDa.



Immunohistochemical analysis of paraffin-embedded human kidney, using MMP14 Antibody .



IF analysis of MMP14 using anti-MMP14 antibody (M00656). MMP14 was detected in an immunocytochemical section of Mouse cell culture coverslip. Enzyme antigen retrieval was performed using IHC enzyme antigen retrieval reagent (AR0022) for 15 mins. The cells were blocked with 10% goat serum. And then incubated with 1:200 rabbit anti-CBL Antibody (PB9077) overnight at 4°C. DyLight®488 Conjugated Goat Anti-Rabbit IgG (BA1127) was used as secondary antibody at 1:500 dilution and incubated for 30 minutes at 37°C. The section was counterstained with DAPI. Visualize using a laser confocal.

4 Publications Citing This Product

1. PubMed ID: 27453531, The inhibition of calpains ameliorates vascular restenosis through MMP2/TGF- β 1 pathway
2. PubMed ID: 24573354, Xiao H, Li H, Yu G, Xiao W, Hu J, Tang K, Zeng J, He W, Zeng G, Ye Z, Xu H. *Oncol Rep.* 2014 Apr;31(4):1832-8. Doi: 10.3892/Or.2014.3048. Epub 2014 Feb 24. *Microrna-10B Promotes Migration And Invasion Through Klf4 And Hoxd10 In Human Bladder Cancer.*

3. PubMed ID: 24765144, Zhou H, Wu A, Fu W, Lv Z, Zhang Z. Oncol Lett. 2014 May;7(5):1395-1400. Epub 2014 Feb 27. Significance Of Semaphorin-3A And Mmp-14 Protein Expression In Non-Small Cell Lung Cancer.

Visit bosterbio.com/anti-mmp14-rabbit-monoclonal-antibody-m00656-boster.html to see all 4 publications.

Submit a product review to Biocompare.com

Submit a review of this product to Biocompare.com to receive a \$20 Amazon.com giftcard! Your reviews help your fellow scientists make the right decisions. Thank you for your contribution.



Anti-MMP14/Mt1 Mmp Rabbit Monoclonal Antibody

For Research Use Only. Not for use in diagnostic procedures.