

Anti-TIM3 HAVCR2 Monoclonal Antibody [10C10]

Catalog Number: M00657

About HAVCR2

The immune checkpoint protein TIM3 is a member of the immunoglobulin superfamily and TIM family of proteins that was initially identified as a specific marker of fully differentiated IFN-gamma producing CD4 T helper 1 (Th1) and CD8 cytotoxic cells. It is a Th1-specific cell surface protein that regulates macrophage activation and negatively regulates Th1-mediated auto- and alloimmune responses, and is also highly expressed on regulatory T cells, monocytes, macrophages, and dendritic cells (1). TIM3 and PD-1 are co-expressed on most CD4 and CD8 T cells infiltrating solid tumors or in hematologic malignancy in mice; blocking TIM3 in conjugation with a PD-1 blockade increases the functionality of exhausted T cells and synergizes with to inhibit tumor growth (2,3).

Overview

Product Name	Anti-TIM3 HAVCR2 Monoclonal Antibody [10C10]
Reactive Species	Human
Description	Boster Bio Anti-TIM3 HAVCR2 Monoclonal Antibody [10C10] (Catalog # M00657). Tested in ELISA, WB, IHC-P, ICC, IF, Flow Cytometry applications. This antibody reacts with Human.
Application	ELISA, Flow Cytometry, IF, IHC-P, ICC, WB
Clonality	Monoclonal Clone: 10C10
Formulation	TIM-3 Antibody is supplied in PBS containing 0.02% sodium azide and 50% glycerol.
Storage Instructions	TIM-3 antibody can be stored at 4°C for three months and -20°C, stable for up to one year. Avoid repeated freeze-thaw cycles. Antibodies should not be exposed to prolonged high temperatures.
Host	Mouse
Uniprot ID	Q8TDQ0

Technical Details

Immunogen	TIM-3 antibody was raised against the extracellular domain of human TIM-3
Predicted Reactive Species	Mouse, Rat
Cross Reactivity	Biotin-GAPDH antibody is human, mouse, rat, and rabbit reactive.
Isotype	IgG1,k
Form	Liquid
Concentration	1 mg/mL
Purification	TIM-3 Antibody is supplied as protein A purified IgG1.

Suggested Dilutions

Dilute the sample so that the expected range of concentrations fall within the detection range of this kit.

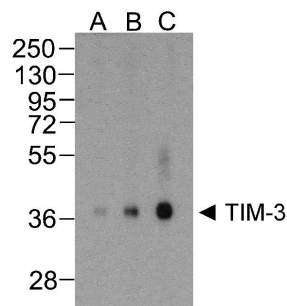
If the expected range of concentration is unknown, a pilot test should be conducted to decide the optimal dilution ratio for your samples.

Some PubMed article(s) citing the expression level of this target are as follows:

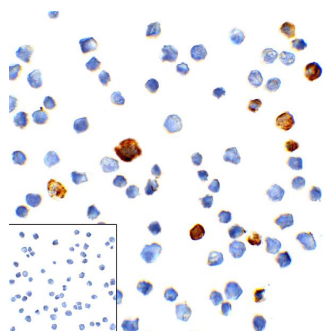
Boster Bio's internal QC testing used:

TIM-3 antibody can be used for ELISA starting at 0.1 ug/mL. For Western blot start at 1 ug/mL. For Immunocytochemistry start at 1 ug/mL. For Immunofluorescence start at 10 ug/mL. For Immunohistochemistry start at 5 ug/mL. For Flow Cytometry start at 0.1 ug/ml. Optimal dilutions for each application should be determined by the researcher.

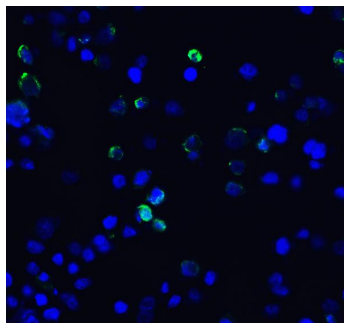
Anti-TIM3 HAVCR2 Monoclonal Antibody [10C10] (M00657) Images



Western blot analysis of TIM-3 in overexpressing HEK293 cells TIM-3 antibody at (A) 0.25

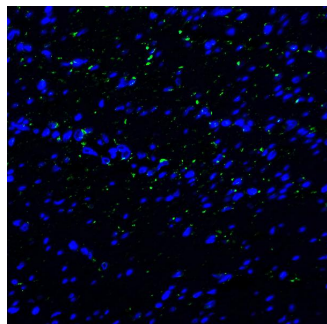


Immunocytochemistry of TIM-3 in transfected HEK293 cells with TIM-3 antibody at 1 ug/mL. Lower left: Immunocytochemistry in transfected HEK293 cells with control mouse IgG antibody at 1 ug/mL.



Immunofluorescence of TIM-3 in transfected HEK293 cells with TIM-3 antibody at 10 ug/mL.

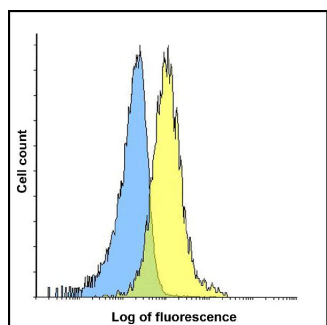
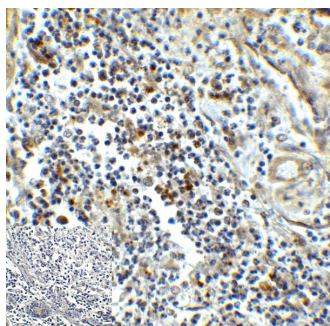
Green: TIM-3 Antibody [10C10] (RF16103)
Blue: DAPI staining



Immunofluorescence of TIM-3 in human colon carcinoma tissue with TIM-3 antibody at 20 ug/mL.

Green: TIM-3 Antibody [10C10] (RF16103)
Blue: DAPI staining

Immunohistochemistry of TIM-3 in human colon carcinoma tissue with TIM-3 antibody at 5 ug/mL.



Flow cytometry analysis of TIM-3 overexpressing HEK293 cells using TIM-3 antibody and control mouse IgG antibody at 0.1 ug/ml. Blue: Untransfected HEK293 cells. Yellow: TIM-3 overexpressing HEK293 cells.

Submit a product review to Biocompare.com

Submit a review of this product to Biocompare.com to receive a \$20 Amazon.com giftcard! Your reviews help your fellow scientists make the right decisions. Thank you for your contribution.



Anti-TIM3 HAVCR2 Monoclonal Antibody [10C10]