

Anti-SETD2 Mouse Monoclonal Antibody [Clone ID: OTI1E1]

Catalog Number: M00660

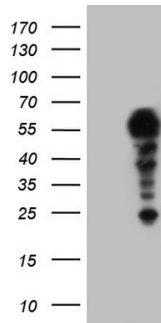
Overview

Product Name	Anti-SETD2 Mouse Monoclonal Antibody [Clone ID: OTI1E1]
Reactive Species	Human, Mouse, Rat
Description	Boster Bio SETD2 mouse monoclonal antibody, clone OTI1E1 (formerly 1E1). Catalog# M00660. Tested in IHC, WB. This antibody reacts with Human, Mouse, Rat.
Application	IHC, WB
Clonality	Monoclonal OTI1E1
Formulation	PBS (pH 7.3) containing 1% stabilizing protein, 50% glycerol and 0.02% sodium azide. This antibody is supplied in a stabilized formulation. Compatibility with conjugation reactions depends on the chemistry of the conjugation method used. For conjugation methods that are not compatible with the stabilizing components present in this formulation, a carrier-free antibody format is required.
Storage Instructions	Store at -20°C as received.
Host	Mouse
Uniprot ID	Q9BYW2

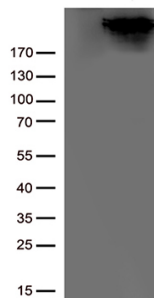
Technical Details

Immunogen	Human recombinant protein fragment corresponding to amino acids 1787-2144 of human SETD2 (NP_054878) produced in E.coli.
Isotype	IgG2a
Concentration	1 mg/ml
Purification	Purified from mouse ascites fluids or tissue culture supernatant by affinity chromatography (protein A/G)
Suggested Dilutions	WB 1:2000 IHC 1:150

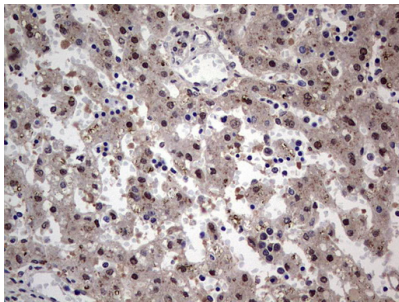
Anti-SETD2 Mouse Monoclonal Antibody [Clone ID: OTI1E1] (M00660) Images



Human recombinant protein fragment corresponding to amino acids 1787-2144 of human SETD2 (NP_054878) produced in E.coli.



HEK293T cells were transfected with the pCMV6-ENTRY control (left lane) or pCMV6-ENTRY SETD2 (Right lane) cDNA clones for 48 hrs and lysed. Equivalent amounts of cell lysates (5 ug per lane) were separated by SDS-PAGE and immunoblotted with anti-SETD2. (1:500)



Immunohistochemical staining of paraffin-embedded Human embryonic liver tissue using anti-SETD2 mouse monoclonal antibody. (Heat-induced epitope retrieval by 1 mM EDTA in 10mM Tris)

Submit a product review to [Biocompare.com](https://www.biocompare.com)

Submit a review of this product to [Biocompare.com](https://www.biocompare.com) to receive a \$20 Amazon.com giftcard! Your reviews help your fellow scientists make the right decisions. Thank you for your contribution.



Anti-SETD2 Mouse Monoclonal Antibody [Clone ID: OTI1E1]

For Research Use Only. Not for use in diagnostic procedures.