

## Anti-Cytochrome P450 2E1 (CYP2E1) Mouse Monoclonal Antibody [Clone ID: OTI5F11]

Catalog Number: M00672-1

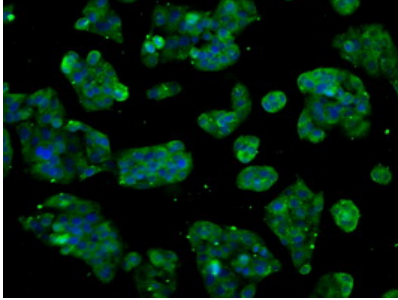
### Overview

Product Name	Anti-Cytochrome P450 2E1 (CYP2E1) Mouse Monoclonal Antibody [Clone ID: OTI5F11]
Reactive Species	Human
Description	Boster Bio Anti-CYP2E1 (Cytochrome P450 2E1) mouse monoclonal antibody, clone OTI5F11 (formerly 5F11). Catalog# M00672-1. Tested in IF, IHC, WB. This antibody reacts with Human.
Conjugate	Unconjugated
Application	IF, IHC, WB
Clonality	Monoclonal OTI5F11
Formulation	PBS (pH 7.3) containing 1% stabilizing protein, 50% glycerol and 0.02% sodium azide. This antibody is supplied in a stabilized formulation. Compatibility with conjugation reactions depends on the chemistry of the conjugation method used. For conjugation methods that are not compatible with the stabilizing components present in this formulation, a carrier-free antibody format is required.
Storage Instructions	Store at -20°C for one year. For short term storage and frequent use, store at 4°C for up to one month. Avoid repeated freeze-thaw cycles.
Host	Mouse
Uniprot ID	P05181

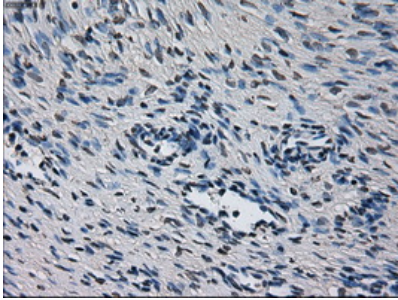
### Technical Details

Immunogen	Full length human recombinant protein of human CYP2E1 (NP_000764) produced in HEK293T cell.
Isotype	IgG1
Concentration	1 mg/ml
Purification	Purified from mouse ascites fluids or tissue culture supernatant by affinity chromatography (protein A/G)
Suggested Dilutions	WB 1:500 IHC 1:50 IF 1:100

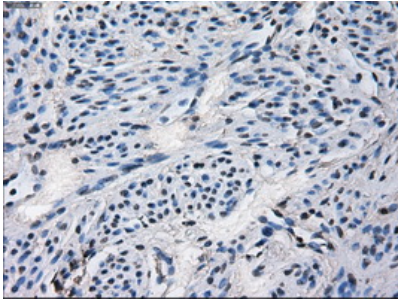
## Anti-Cytochrome P450 2E1 (CYP2E1) Mouse Monoclonal Antibody [Clone ID: OTI5F11] (M00672-1) Images



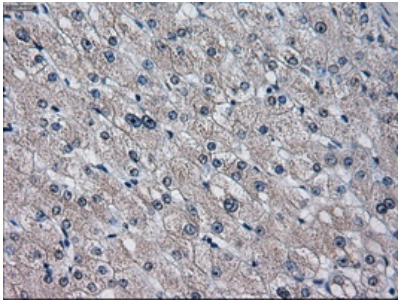
Immunofluorescent staining of HepG2 cells using anti-CYP2E1 mouse monoclonal antibody (M00672-1).



Immunohistochemical staining of paraffin-embedded Ovary tissue within the normal limits using anti-CYP2E1 mouse monoclonal antibody. (Heat-induced epitope retrieval by 10mM citric buffer)

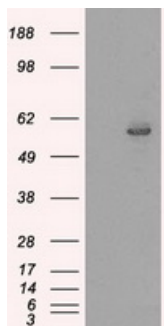


Immunohistochemical staining of paraffin-embedded endometrium tissue within the normal limits using anti-CYP2E1 mouse monoclonal antibody. (Heat-induced epitope retrieval by 10mM citric buffer)



Immunohistochemical staining of paraffin-embedded liver tissue within the normal limits using anti-CYP2E1 mouse monoclonal antibody. (Heat-induced epitope retrieval by 10mM citric buffer)

HEK293T cells were transfected with the pCMV6-ENTRY control (Left lane) or pCMV6-ENTRY CYP2E1 (Right lane) cDNA for 48 hrs and lysed. Equivalent amounts of cell lysates (5 ug per lane) were separated by SDS-PAGE and immunoblotted with anti-CYP2E1.



## Submit a product review to Biocompare.com

Submit a review of this product to Biocompare.com to receive a \$20 Amazon.com giftcard! Your reviews help your fellow scientists make the right decisions. Thank you for your contribution.



Anti-Cytochrome P450 2E1 (CYP2E1) Mouse Monoclonal Antibody [Clone ID: OTI5F11]

For Research Use Only. Not for use in diagnostic procedures.