

Anti-PLCG1 Antibody (Center)

Catalog Number: M00677-1

About PLCG1

Mediates the production of the second messenger molecules diacylglycerol (DAG) and inositol 1,4,5-trisphosphate (IP3). Plays an important role in the regulation of intracellular signaling cascades. Becomes activated in response to ligand-mediated activation of receptor-type tyrosine kinases, such as PDGFRA, PDGFRB, FGFR1, FGFR2, FGFR3 and FGFR4. Plays a role in actin reorganization and cell migration.

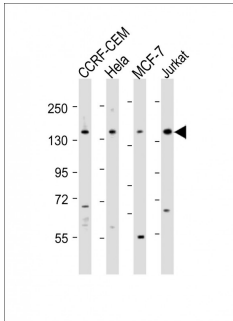
Overview

Product Name	Anti-PLCG1 Antibody (Center)
Reactive Species	Human
Description	Boster Bio Anti-PLCG1 Antibody (Center) (Catalog # M00677-1). Tested in WB application(s). This antibody reacts with Human.
Application	WB
Clonality	Polyclonal
Formulation	Purified polyclonal antibody supplied in PBS with 0.09% (W/V) sodium azide.
Storage Instructions	Maintain refrigerated at 2-8°C for up to 2 weeks. For long-term storage, store at -20°C in small aliquots to prevent freeze-thaw cycles.
Host	Rabbit
Uniprot ID	P19174

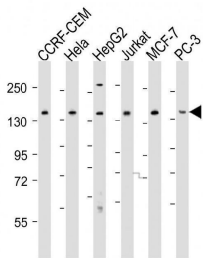
Technical Details

Immunogen	This PLCG1 antibody is generated from a rabbit immunized with a KLH conjugated synthetic peptide between 456-488 amino acids from the Central region of human PLCG1.
Predicted Reactive Species	Bovine, Mouse
Isotype	Rabbit IgG
Purification	This antibody is purified through a protein A column, followed by peptide affinity purification.
Suggested Dilutions	WB: 1:2000

Anti-PLCG1 Antibody (Center) (M00677-1) Images



All lanes : Anti-PLCG1 Antibody (Center) at 1:2000 dilution
Lane 1: CCRF-CEM whole cell lysates
Lane 2: HeLa whole cell lysates
Lane 3: MCF-7 whole cell lysates
Lane 4: Jurkat whole cell lysates
Lysates/proteins at 20 µg per lane.
Secondary Goat Anti-Rabbit IgG, (H+L), Peroxidase conjugated at 1/10000 dilution
Predicted band size : 149 kDa
Blocking/Dilution buffer: 5% NFDM/TBST.



All lanes : Anti-PLCG1 Antibody (Center) at 1:2000 dilution
Lane 1: CCRF-CEM whole cell lysates
Lane 2: HeLa whole cell lysates
Lane 3: HepG2 whole cell lysates
Lane 4: Jurkat whole cell lysates
Lane 5: MCF-7 whole cell lysates
Lane 6: PC-3 whole cell lysates
Lysates/proteins at 20 µg per lane. Secondary Goat Anti-Rabbit IgG, (H+L), Peroxidase conjugated at 1/10000 dilution
Predicted band size : 149 kDa
Blocking/Dilution buffer: 5% NFDM/TBST.

Submit a product review to Biocompare.com

Submit a review of this product to Biocompare.com to receive a \$20 Amazon.com giftcard! Your reviews help your fellow scientists make the right decisions. Thank you for your contribution.



Anti-PLCG1 Antibody (Center)

For Research Use Only. Not for use in diagnostic procedures.