

Anti-KISS1 Antibody (C-Term)

Catalog Number: M00689-1

About KISS1

Metastasis suppressor protein in malignant melanomas and in some breast cancers. May regulate events downstream of cell- matrix adhesion, perhaps involving cytoskeletal reorganization. Generates a C-terminally amidated peptide, metastin which functions as the endogenous ligand of the G-protein coupled receptor GPR54. Activation of the receptor inhibits cell proliferation and cell migration, key characteristics of tumor metastasis. Kp-10 is a decapeptide derived from the primary translation product, isolated in conditioned medium of first trimester trophoblast. Kp-10, but not other kisspeptins, increased intracellular Ca(2+) levels in isolated first trimester trophoblasts. Kp-10 is a paracrine/endocrine regulator in fine-tuning trophoblast invasion generated by the trophoblast itself. The receptor is also essential for normal gonadotropin-released hormone physiology and for puberty. The hypothalamic KISS1/GPR54 system is a pivotal factor in central regulation of the gonadotropic axis at puberty and in adulthood.

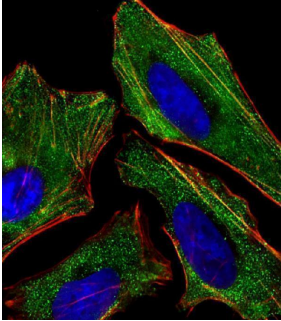
Overview

Product Name	Anti-KISS1 Antibody (C-Term)
Reactive Species	Human
Description	Boster Bio Anti-KISS1 Antibody (C-Term) (Catalog # M00689-1). Tested in WB, IF application(s). This antibody reacts with Human.
Application	IF, WB
Clonality	Polyclonal
Formulation	Purified polyclonal antibody supplied in PBS with 0.09% (W/V) sodium azide.
Storage Instructions	Maintain refrigerated at 2-8°C for up to 2 weeks. For long-term storage, store at -20°C in small aliquots to prevent freeze-thaw cycles.
Host	Rabbit
Uniprot ID	Q15726

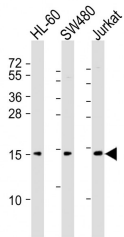
Technical Details

Immunogen	This KISS1 antibody is generated from a rabbit immunized with a KLH conjugated synthetic peptide between 115-145 amino acids from the human region of human KISS1.
Predicted Reactive Species	Bovine, Mouse
Isotype	Rabbit IgG
Purification	This antibody is purified through a protein A column, followed by peptide affinity purification.
Suggested Dilutions	IF: 1:25 WB: 1:2000

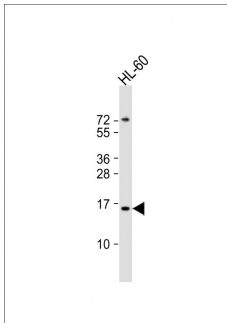
Anti-KISS1 Antibody (C-Term) (M00689-1) Images



Immunofluorescent analysis of 4% paraformaldehyde-fixed, 0.1% Triton X-100 permeabilized HeLa (human cervical epithelial adenocarcinoma cell line) cells labeling KISS1 with M00689-1 at 1/25 dilution, followed by Dylight® 488-conjugated goat anti-rabbit IgG secondary antibody at 1/200 dilution (green). Immunofluorescence image showing cytoplasm staining on HeLa cell line. Cytoplasmic actin is detected with Dylight® 554 Phalloidin at 1/100 dilution (red). The nuclear counter stain is DAPI (blue).



All lanes : Anti-KISS1 Antibody (C-Term) at 1:2000 dilution
Lane 1: HL-60 whole cell lysates
Lane 2: SW480 whole cell lysates
Lane 3: Jurkat whole cell lysates
Lysates/proteins at 20 µg per lane. Secondary Goat Anti-Rabbit IgG, (H+L), Peroxidase conjugated at 1/10000 dilution
Predicted band size : 15 kDa
Blocking/Dilution buffer: 5% NFDN/TBST.



Anti-KISS1 Antibody (C-Term) at 1:2000 dilution + HL-60 whole cell lysates
Lysates/proteins at 20 µg per lane. Secondary Goat Anti-Rabbit IgG, (H+L), Peroxidase conjugated at 1/10000 dilution
Predicted band size : 15 kDa
Blocking/Dilution buffer: 5% NFDN/TBST.

Submit a product review to Biocompare.com

Submit a review of this product to Biocompare.com to receive a \$20 Amazon.com giftcard! Your reviews help your fellow scientists make the right decisions. Thank you for your contribution.



Anti-KISS1 Antibody (C-Term)

For Research Use Only. Not for use in diagnostic procedures.