

Anti-Protein Kinase A regulatory subunit I alpha (PRKAR1A) Mouse Monoclonal Antibody [Clone ID: OTI6C7]

Catalog Number: M00699

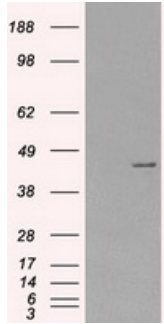
Overview

Product Name	Anti-Protein Kinase A regulatory subunit I alpha (PRKAR1A) Mouse Monoclonal Antibody [Clone ID: OTI6C7]
Reactive Species	Human, Mouse, Rat
Description	Boster Bio Anti-PRKAR1A (PKA regulatory subunit I alpha) mouse monoclonal antibody, clone OTI6C7 (formerly 6C7). Catalog# M00699. Tested in IF, IHC, WB. This antibody reacts with Human, Mouse, Rat.
Application	IF, IHC, WB
Clonality	Monoclonal OTI6C7
Formulation	PBS (pH 7.3) containing 1% stabilizing protein, 50% glycerol and 0.02% sodium azide. This antibody is supplied in a stabilized formulation. Compatibility with conjugation reactions depends on the chemistry of the conjugation method used. For conjugation methods that are not compatible with the stabilizing components present in this formulation, a carrier-free antibody format is required.
Storage Instructions	Store at -20°C as received.
Host	Mouse
Uniprot ID	P10644

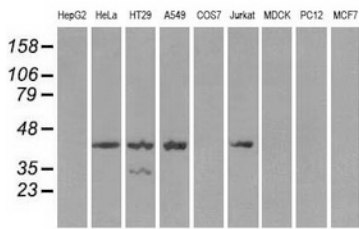
Technical Details

Immunogen	Full-length protein expressed in 293T cell transfected with human PRKAR1A expression vector
Isotype	IgG1
Concentration	1 mg/ml
Purification	Purified from mouse ascites fluids or tissue culture supernatant by affinity chromatography (protein A/G)
Suggested Dilutions	WB: 1:2000 IHC: 1:50 IF: 1:100

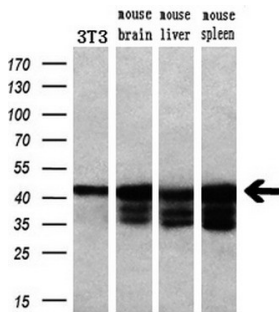
Anti-Protein Kinase A regulatory subunit I alpha (PRKAR1A) Mouse Monoclonal Antibody [Clone ID: OTI6C7] (M00699) Images



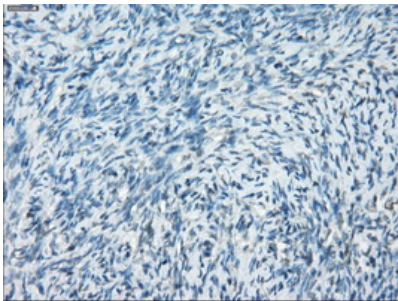
HEK293T cells were transfected with the pCMV6-ENTRY control (Left lane) or pCMV6-ENTRY PRKAR1A (Right lane) cDNA for 48 hrs and lysed. Equivalent amounts of cell lysates (5 ug per lane) were separated by SDS-PAGE and immunoblotted with anti-PRKAR1A.



Western blot analysis of extracts (35ug) from 9 different cell lines by using anti-PRKAR1A monoclonal antibody.

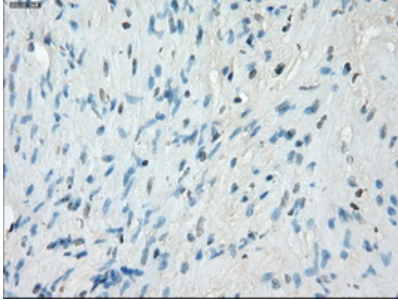
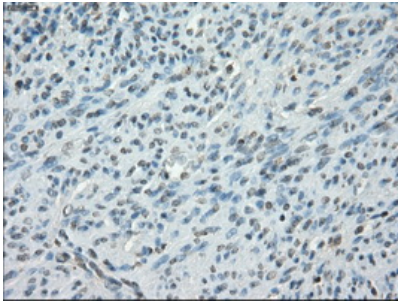


Western blot analysis of extracts (10ug) from a mouse cell line and 3 different mouse tissues by using anti-PRKAR1A monoclonal antibody (1:200).



Immunohistochemical staining of paraffin-embedded Ovary tissue within the normal limits using anti-PRKAR1A mouse monoclonal antibody. (Heat-induced epitope retrieval by 10mM citric buffer)

Immunohistochemical staining of paraffin-embedded endometrium tissue within the normal limits using anti-PRKAR1A mouse monoclonal antibody. (Heat-induced epitope retrieval by 10mM citric buffer)



Immunohistochemical staining of paraffin-embedded prostate tissue within the normal limits using anti-PRKAR1A mouse monoclonal antibody. (Heat-induced epitope retrieval by 10mM citric buffer)

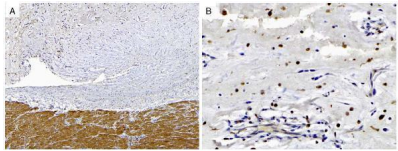
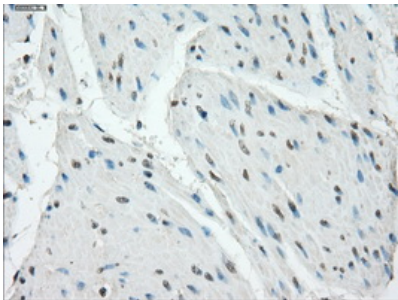
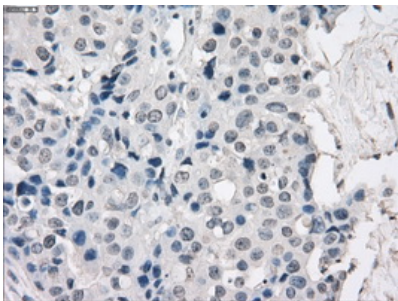


Figure from citation: PRKAR1A IHC in a CNC-associated cardiac myxoma. A

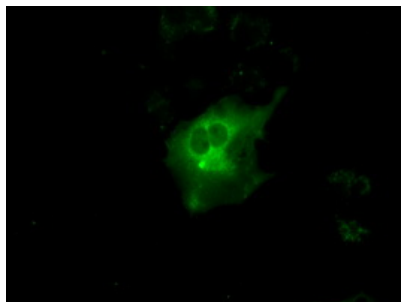
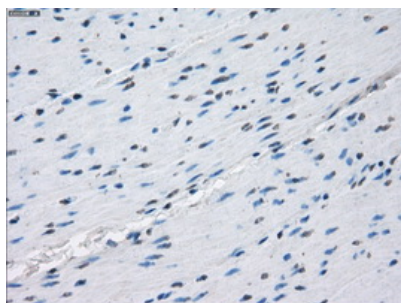


Immunohistochemical staining of paraffin-embedded Carcinoma of bladder tissue using anti-PRKAR1A mouse monoclonal antibody. (Heat-induced epitope retrieval by 10mM citric buffer)



Immunohistochemical staining of paraffin-embedded Adenocarcinoma of breast tissue using anti-PRKAR1A mouse monoclonal antibody. (Heat-induced epitope retrieval by 10mM citric buffer)

Immunohistochemical staining of paraffin-embedded colon tissue within the normal limits using anti-PRKAR1A mouse monoclonal antibody. (Heat-induced epitope retrieval by 10mM citric buffer)



Anti-PRKAR1A mouse monoclonal antibody (M00699) immunofluorescent staining of COS7 cells transiently transfected by pCMV6-ENTRY PRKAR1A.

Submit a product review to Biocompare.com

Submit a review of this product to Biocompare.com to receive a \$20 Amazon.com giftcard! Your reviews help your fellow scientists make the right decisions. Thank you for your contribution.



Anti-Protein Kinase A regulatory subunit I alpha (PRKAR1A) Mouse Monoclonal Antibody [Clone ID: OTI6C7]

For Research Use Only. Not for use in diagnostic procedures.