

## Anti-Cyclin A1/A2 Rabbit Monoclonal Antibody

Catalog Number: M00700

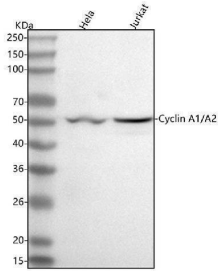
### Overview

Product Name	Anti-Cyclin A1/A2 Rabbit Monoclonal Antibody
Reactive Species	Human
Description	Boster Bio Anti-Cyclin A1/A2 Rabbit Monoclonal Antibody catalog # M00700. Tested in WB, IHC, IP applications. This antibody reacts with Human.
Application	IP, IHC, WB
Clonality	Monoclonal HOD-3
Formulation	Rabbit IgG in stabilizing components, phosphate buffered saline, pH 7.4, 150mM NaCl, 0.02% sodium azide and 50% glycerol. *This antibody is supplied in a stabilized formulation. Compatibility with conjugation reactions depends on the chemistry of the conjugation method used. For conjugation methods that are not compatible with the stabilizing components present in this formulation, a carrier-free antibody format is required.
Storage Instructions	Store at -20°C for one year. For short term storage and frequent use, store at 4°C for up to one month. Avoid repeated freeze-thaw cycles.
Host	Rabbit
Uniprot ID	P20248/P78396

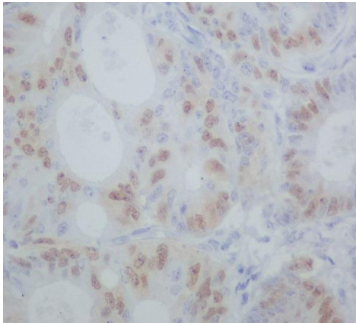
### Technical Details

Immunogen	A synthesized peptide derived from human Cyclin A1/A2
Isotype	Rabbit IgG
Form	Liquid
Concentration	0.5mg/ml
Purification	Affinity-chromatography
Suggested Dilutions	WB 1:500-2000 IHC 1:50-200 IP 1:20

## Anti-Cyclin A1/A2 Rabbit Monoclonal Antibody (M00700) Images



Western blot analysis of Cyclin A1/A2 using anti-Cyclin A1/A2 antibody (M00700). Electrophoresis was performed on a 5-20% SDS-PAGE gel at 70V (Stacking gel) / 90V (Resolving gel) for 2-3 hours. The sample well of each lane was loaded with 30 ug of sample under reducing conditions. Lane 1: human Hela whole cell lysates, Lane 2: human Jurkat whole cell lysates. After electrophoresis, proteins were transferred to a nitrocellulose membrane at 150 mA for 50-90 minutes. Blocked the membrane with 5% non-fat milk/TBS for 1.5 hour at RT. The membrane was incubated with rabbit anti-Cyclin A1/A2 antigen affinity purified monoclonal antibody (Catalog # M00700) at 1:500 overnight at 4°C, then washed with TBS-0.1%Tween 3 times with 5 minutes each and probed with a goat anti-rabbit IgG-HRP secondary antibody at a dilution of 1:5000 for 1.5 hour at RT. The signal is developed using an Enhanced Chemiluminescent detection (ECL) kit (Catalog # EK1002) with Tanon 5200 system. A specific band was detected for Cyclin A1/A2 at approximately 55 kDa. The expected band size for Cyclin A1/A2 is at 49 kDa.



Immunohistochemical analysis of paraffin-embedded human colon cancer, using Cyclin A1/A2 Antibody.

## 2 Publications Citing This Product

1. PubMed ID: 31974617, Wang S,Zhang C,Zhang X.Downregulation of long non-coding RNA ANRIL promotes proliferation and migration in hypoxic human pulmonary artery smooth muscle cells.Mol Med Rep.2020 Feb;21(2):589-596.doi:10.3892/mmr.2019.10887.Epub 2019 Dec 17.PMID:31974617; PMC

2. PubMed ID: 25918708, Wang C, Ge Q, Chen Z, Hu J, Li F, Song X, Xu H, Ye Z. Biomed Res Int. 2015;2015:304753. Doi: 10.1155/2015/304753. Epub 2015 Mar 30. A New Double Stranded Rna Suppresses Bladder Cancer Development By Upregulating P21 (Waf1/Cip1) Expression.

Visit [bosterbio.com/anti-cyclin-a1-a2-rabbit-monoclonal-antibody-m00700-boster.html](http://bosterbio.com/anti-cyclin-a1-a2-rabbit-monoclonal-antibody-m00700-boster.html) to see all 2 publications.

## Submit a product review to Biocompare.com

Submit a review of this product to Biocompare.com to receive a \$20 Amazon.com giftcard! Your reviews help your fellow scientists make the right decisions. Thank you for your contribution.



Anti-Cyclin A1/A2 Rabbit Monoclonal Antibody

For Research Use Only. Not for use in diagnostic procedures.