

Anti-Plasminogen (PLG) Mouse Monoclonal Antibody [Clone ID: OTI4F5]

Catalog Number: M00702

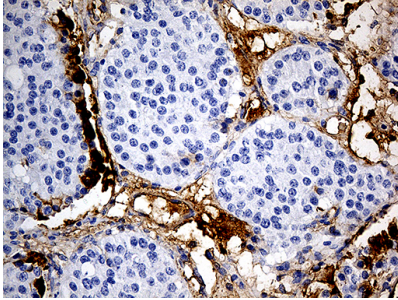
Overview

Product Name	Anti-Plasminogen (PLG) Mouse Monoclonal Antibody [Clone ID: OTI4F5]
Reactive Species	Human
Description	Boster Bio PLG mouse monoclonal antibody, clone OTI4F5. Catalog# M00702. Tested in IHC. This antibody reacts with Human.
Application	IHC
Clonality	Monoclonal OTI4F5
Formulation	PBS (pH 7.3) containing 1% stabilizing protein, 50% glycerol and 0.02% sodium azide. This antibody is supplied in a stabilized formulation. Compatibility with conjugation reactions depends on the chemistry of the conjugation method used. For conjugation methods that are not compatible with the stabilizing components present in this formulation, a carrier-free antibody format is required.
Storage Instructions	Store at -20°C as received.
Host	Mouse
Uniprot ID	P00747

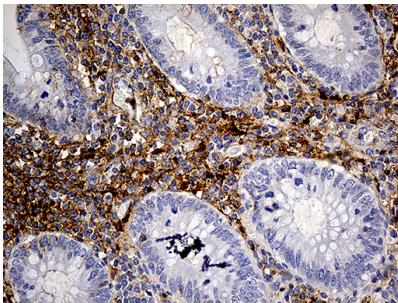
Technical Details

Immunogen	Human recombinant protein fragment corresponding to amino acids 301-586 of human PLG (NP_000292) produced in E.coli.
Isotype	IgG1
Concentration	1 mg/ml
Purification	Purified from mouse ascites fluids or tissue culture supernatant by affinity chromatography (protein A/G)
Suggested Dilutions	IHC 1:500

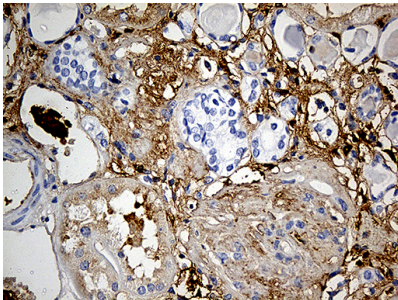
Anti-Plasminogen (PLG) Mouse Monoclonal Antibody [Clone ID: OTI4F5] (M00702) Images



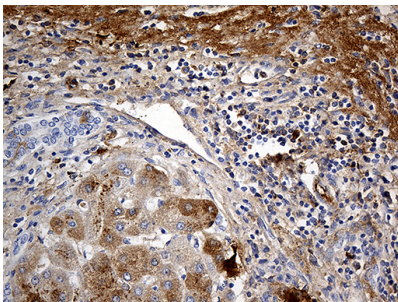
Immunohistochemical staining of paraffin-embedded Carcinoma of Human pancreas tissue using anti-PLG mouse monoclonal antibody. (Heat-induced epitope retrieval by 1mM EDTA in 10mM Tris buffer (pH8.5) at 120°C for 3min)



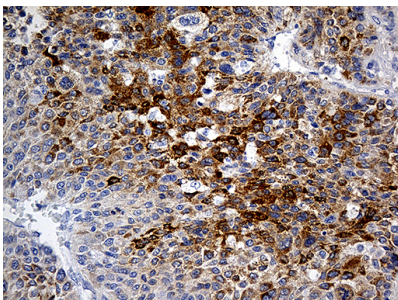
Immunohistochemical staining of paraffin-embedded Human appendix tissue within the normal limits using anti-PLG mouse monoclonal antibody. (Heat-induced epitope retrieval by 1mM EDTA in 10mM Tris buffer (pH8.5) at 120°C for 3min)



Immunohistochemical staining of paraffin-embedded Human Kidney tissue within the normal limits using anti-PLG mouse monoclonal antibody. (Heat-induced epitope retrieval by 1mM EDTA in 10mM Tris buffer (pH8.5) at 120°C for 3min)



Immunohistochemical staining of paraffin-embedded Human liver tissue within the normal limits using anti-PLG mouse monoclonal antibody. (Heat-induced epitope retrieval by 1mM EDTA in 10mM Tris buffer (pH8.5) at 120°C for 3min)



Immunohistochemical staining of paraffin-embedded Carcinoma of Human liver tissue using anti-PLG mouse monoclonal antibody. (Heat-induced epitope retrieval by 1mM EDTA in 10mM Tris buffer (pH8.5) at 120°C for 3min)

Submit a product review to Biocompare.com

Submit a review of this product to Biocompare.com to receive a \$20 Amazon.com giftcard! Your reviews help your fellow scientists make the right decisions. Thank you for your contribution.



Anti-Plasminogen (PLG) Mouse Monoclonal Antibody [Clone ID: OTI4F5]

For Research Use Only. Not for use in diagnostic procedures.