

## Anti-CCL4/MIP1 beta Rabbit Monoclonal Antibody

Catalog Number: M00703

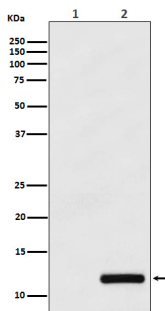
### Overview

Product Name	Anti-CCL4/MIP1 beta Rabbit Monoclonal Antibody
Reactive Species	Human, Mouse
Description	Boster Bio Anti-CCL4/MIP1 beta Rabbit Monoclonal Antibody catalog # M00703. Tested in WB, ICC/IF, IP applications. This antibody reacts with Human, Mouse.
Application	IP, IF, ICC, WB
Clonality	Monoclonal 23C55
Formulation	Rabbit IgG in stabilizing components, phosphate buffered saline, pH 7.4, 150mM NaCl, 0.02% sodium azide and 50% glycerol. *This antibody is supplied in a stabilized formulation. Compatibility with conjugation reactions depends on the chemistry of the conjugation method used. For conjugation methods that are not compatible with the stabilizing components present in this formulation, a carrier-free antibody format is required.
Storage Instructions	Store at -20°C for one year. For short term storage and frequent use, store at 4°C for up to one month. Avoid repeated freeze-thaw cycles.
Host	Rabbit
Uniprot ID	P13236

### Technical Details

Immunogen	A synthesized peptide derived from human CCL4/MIP1 beta
Isotype	IgG
Form	Liquid
Concentration	0.5mg/ml
Purification	Affinity-chromatography
Suggested Dilutions	WB 1:1000-5000 ICC/IF 1:50-200 IP 1:50

## Anti-CCL4/MIP1 beta Rabbit Monoclonal Antibody (M00703) Images



Western blot analysis of CCL4/MIP1 beta expression in (1) THP-1 cell lysate; (2) THP-1 cell treated with PMA+LPS+Brefeldin A.

### Submit a product review to Biocompare.com

Submit a review of this product to Biocompare.com to receive a \$20 Amazon.com giftcard! Your reviews help your fellow scientists make the right decisions. Thank you for your contribution.



Anti-CCL4/MIP1 beta Rabbit Monoclonal Antibody

For Research Use Only. Not for use in diagnostic procedures.