

Anti-SSB Mouse Monoclonal Antibody [Clone ID: OTI9D6]

Catalog Number: M00705

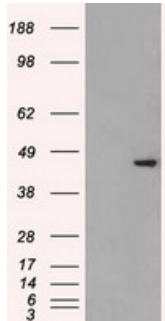
Overview

Product Name	Anti-SSB Mouse Monoclonal Antibody [Clone ID: OTI9D6]
Reactive Species	Dog, Human, Monkey
Description	Boster Bio Anti-SSB mouse monoclonal antibody, clone OTI9D6 (formerly 9D6). Catalog# M00705. Tested in FC, IF, IHC, IP, WB. This antibody reacts with Human, Monkey, Dog.
Application	Flow Cytometry, IP, IF, IHC, WB
Clonality	Monoclonal OTI9D6
Formulation	PBS (pH 7.3) containing 1% BSA, 50% glycerol and 0.02% sodium azide.
Storage Instructions	Store at -20°C as received.
Host	Mouse
Uniprot ID	P05455

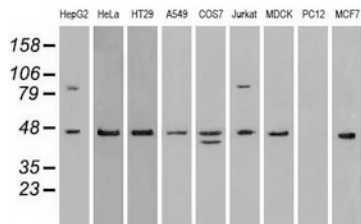
Technical Details

Immunogen	Full-length protein expressed in 293T cell transfected with human SSB expression vector
Isotype	IgG3
Concentration	0.63 mg/ml
Purification	Purified from mouse ascites fluids or tissue culture supernatant by affinity chromatography (protein A/G)
Suggested Dilutions	Dilute the sample so that the expected range of concentrations fall within the detection range of this kit. If the expected range of concentration is unknown, a pilot test should be conducted to decide the optimal dilution ratio for your samples. Some PubMed article(s) citing the expression level of this target are as follows:

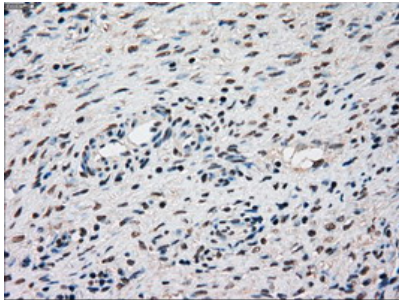
Anti-SSB Mouse Monoclonal Antibody [Clone ID: OTI9D6] (M00705) Images



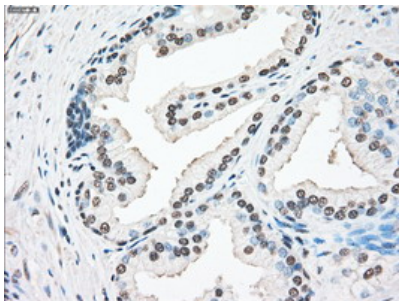
HEK293T cells were transfected with the pCMV6-ENTRY control (Left lane) or pCMV6-ENTRY SSB (Right lane) cDNA for 48 hrs and lysed. Equivalent amounts of cell lysates (5 ug per lane) were separated by SDS-PAGE and immunoblotted with anti-SSB.



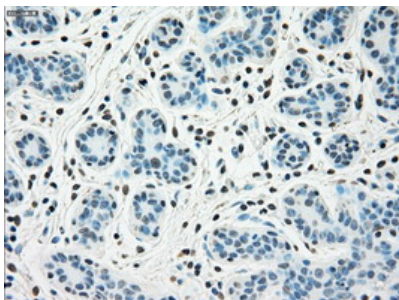
Western blot analysis of extracts (35ug) from 9 different cell lines by using anti-SSB monoclonal antibody.



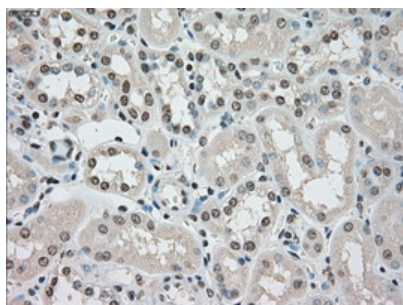
Immunohistochemical staining of paraffin-embedded Human Ovary tissue within the normal limits using anti-SSB mouse monoclonal antibody. (Heat-induced epitope retrieval by 10mM citric buffer)



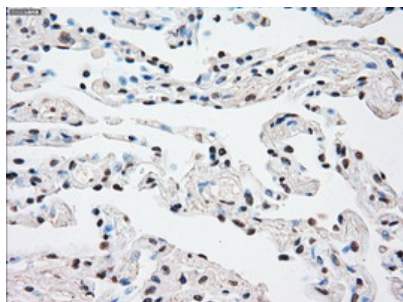
Immunohistochemical staining of paraffin-embedded Human prostate tissue within the normal limits using anti-SSB mouse monoclonal antibody. (Heat-induced epitope retrieval by 10mM citric buffer)



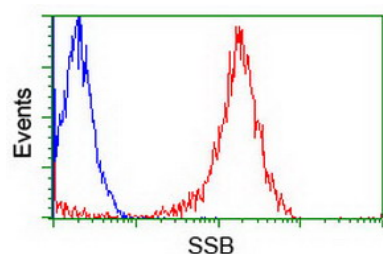
Immunohistochemical staining of paraffin-embedded Human breast tissue within the normal limits using anti-SSB mouse monoclonal antibody. (Heat-induced epitope retrieval by 10mM citric buffer)



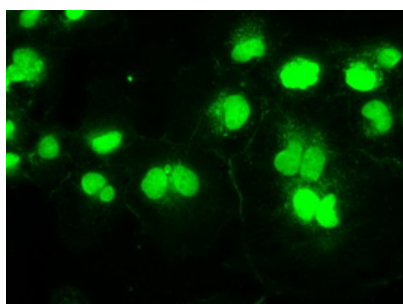
Immunohistochemical staining of paraffin-embedded Human Kidney tissue within the normal limits using anti-SSB mouse monoclonal antibody. (Heat-induced epitope retrieval by 10mM citric buffer)



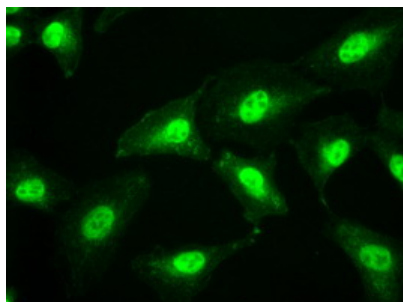
Immunohistochemical staining of paraffin-embedded Human lung tissue within the normal limits using anti-SSB mouse monoclonal antibody. (Heat-induced epitope retrieval by 10mM citric buffer)



Flow cytometric Analysis of Jurkat cells



Anti-SSB mouse monoclonal antibody (M00705) immunofluorescent staining of COS7 cells transiently transfected by pCMV6-ENTRY SSB.



Immunofluorescent staining of A549 cells using anti-SSB mouse monoclonal antibody (M00705).

Submit a product review to Biocompare.com

Submit a review of this product to Biocompare.com to receive a \$20 Amazon.com giftcard! Your



reviews help your fellow scientists make the right decisions. Thank you for your contribution.

Anti-SSB Mouse Monoclonal Antibody [Clone ID: OTI9D6]